

關愛傳遍 和諧共建 Harmony Community

年報
Annual Report
2017/2018



香港宣教會社會服務處有限公司
Hong Kong Evangelical Church Social Service Limited



Charity listed on

Wise Giving 慈善機構



目錄 CONTENT

背景與宗旨	Background and Mission	2
主席的話	Chairman's Foreword	4
各服務單位回顧及展望	Service Review	6
服務點滴	Service Highlight	10
鳴謝	Acknowledgement	27
各服務單位服務數據摘要	Service Statistic Figures	32
財務概覽	Financial Review	37
核數報告	Auditor's Report	38
董事及管理委員名錄	List of Directors and Management Board Members	41
架構圖	Organization Chart	42
服務單位簡介及通訊	Our Service Units	44

流淚撒種的必歡呼收割
They that sow in tears
shall reap in joy.

詩篇
Psalms
126:5



背景與宗旨 Background and Mission

背景

香港宣教會為一基督教宗派，由一九五四年開始在香港石硤尾區內發展福音工作，至今在港建立了二十間堂會。

香港宣教會除積極傳揚福音和建立教會外，也透過社會服務具體地表達基督對人的愛和關懷；由五十年代至今，先後興辦了學校、自修室、老人中心、自負盈虧的綜合家庭服務中心及社區中心，以服務社區上有需要之人仕。

香港宣教會為增強對社會服務之關注和社會大眾的認受性，遂於一九九五年二月廿八日向公司註冊署及稅務局申請成立非牟利慈善團體「香港宣教會社會服務處有限公司」，並獲法人地位，全面輔助各項社會服務的發展。

Background

Hong Kong Evangelical Church (HKEC for short) is a Christian Denomination. Being engaged in Missionary Outreach in Shek Kip Mei of Hong Kong since 1954, it has established up to now 20 local churches in Hong Kong.

In addition to Missionary Outreach and establishing local churches, HKEC expresses Christ's love and care of humankind through Social Services. Since 1950s, it has established schools, study centers, elderly centers and self-financed integrated family centers to serve the people in need in the communities.

In order to emphasize the community care and enhance the recognition of its social services, on 28 Feb 1995, HKECSS was incorporated under the Companies Ordinance and was granted tax exemption under Section 88 of the Inland Revenue Ordinance as a charitable organization. HKECSS is a corporate body that exists for the purpose of developing various Social Services.

宗旨

實踐耶穌基督傳揚福音和服務人群的精神，為個人、家庭及社區的需要，提供優質及結合福音的社會服務。

Mission

To follow Jesus Christ's example to preach the Gospel and to serve people by providing social services of high quality and combine the Gospel for the needs of individuals, families and communities.





主席的話 CHAIRMAN'S FOREWORD

感謝天父上帝的帶領，讓香港宣教會社會服務經歷了各樣的恩典。過往我們的服務遍佈於屯門區、上水區、粉嶺區、大埔區及沙田區，在二零一八年裡，我們將增加一個鄰舍中心的服務單位，而位置則於九龍白田，按地區的發展，我們將擴至六個地域。將成立的恩田鄰舍服務中心是一個自負盈虧的中心，這運作或管理形式的好處是較有彈性、活動或服務的方式可具創意和濃厚的信仰色彩。當然我們所做的服務，也不會忘記初衷：「實踐耶穌基督傳揚福音和服務人群的精神，為個人、家庭及社區的需要，提供優質及結合福音的社會服務。」

在資訊千變萬化的城市裡，無論政府或社會的要求下，對服務機構管治的問責及財政的透明度都不斷提高，而服務單位的中心要做好內部監察和監控，又要達至優質的服務表現，要牽涉的人手和工作量實在不少。在有限的服務處行政人手資源的情況下，我們還努力用體力精神去面對大大小小的困難，陸陸續續地完成和跨越困境，這實在是上帝的恩典使我們完成。

承蒙天父上帝的帶領，我們不斷發展成多元化的社會服務，整全的社會服務於不同的年紀及家庭，又讓缺乏和有需要的

Thanks to the blessing of the Lord, Hong Kong Evangelical Church Social Service Limited has experienced all kinds of grace from him. In 2018, we will set up a new neighbourhood centre in Pak Tin Estate, Kowloon, that expand our service scope to six regions other than Tuen Mun, Sheung Shui, Fanling, Tai Po and Shatin. We will establish Yan Tin Neighbourhood Services Centre in self-financing mode that this form of operation or management allow us more flexible, active and service-oriented. And we do not forget to plan our service under our mission: To follow Jesus Christ's example to preach the Gospel and to serve people by providing social services of high quality and combine the Gospel for the needs of individuals, families and communities.

In the ever-changing city, regardless of the requirements of the government or the society, the accountability and financial transparency of service organization governance are constantly improving, and the center of service units must be properly monitored with and high-quality Service performance. It leads demanding manpower and workload. In the situation of limited manpower resources and administrative cost, we also strive to face the difficulties of large and small with the spirit of physical strength, and continue to complete and cross the predicament, which is really the grace of God for us to complete.

Under the leading of God the Father, we continue to develop diversified and holistic social service serves different ages and families, and needy people who lack of appropriate care in the community. In order to improve the service level, we also strive to build a team of solidarity and care to serve the community with professional and practical actions.

人士獲得合適的關懷。為了令服務水平改善，我們也努力建立團結力量及關愛的團隊，從以人為本的精神出發而發揮專業的服務水準，又以實際行動服務社群。

隨着社會不斷發展和進步，個人或家庭的需要亦日趨複雜，我們必須擴展不同的社會服務，以滿足不同社群的需要。除了政府的資源輔助之外，我們展望未來能與商界、善長、同業、社區人士和義工合作，達至獻上愛與熱誠及服侍社群，共建更美好的未來。

董事局主席
陳汝生牧師

In the rapid develop society, the needs of individuals or families are becoming more complex. We must expand different social services to meet the needs of different communities. In addition to the government's resource assistance, we look forward to working with the business community, donors, the industry, the community and the volunteers to achieve love and enthusiasm and serve the community to build a better future.

I hope that we can glorify God in different communities and experience the bible: "My grace is sufficient for you, for my power is made perfect in weakness." Corinthians 12:9

Chairman
Rev Chan Yu Sang

各服務單位回顧及展望 SERVICE REVIEW



香港宣教會大興長者鄰舍中心

中心自從轉型至鄰舍中心後所提供的長者服務範疇更廣泛，包括：護老者支援服務、義工服務、隱閉長者服務、個案工作、長者牙科服務，另外，為有需要入住院舍的長者提供安老院統一評估服務。透過上述不同的服務及個人的關懷，為有需要之長者及其家人帶來更加多的優質服務。

現時中心會員人數眾多，主要來自屯門大興邨及附近居住之長者。透過中心服務使他們學習不同的技能，包括學習如何使用 I-PAD，柔力球學習班及一些認知障礙訓練等。

其次，中心亦和惜食堂合作，為有需要長者提供免費午餐及晚餐服務，為他們解決在處理膳食方面的困難及金錢上負擔。

中心在 2018 年 1 月進行為期 4 個月的中心設施優化工程，期望工程後中心有更舒適環境及適切服務提供予區內長者。

香港宣教會白普理上水家庭中心

中心近年致力發展及推動幼兒發展及家長親職教育工作，透過親子遊戲、品格教育、親子伴讀及多元化幼兒活動，啟發孩子的潛能、培養自信心和好品格。同時，我們為父母及其他照顧幼兒的人士，提供一套正確、簡單而實用的育幼知識，與他們在孩子的成長路上同行，使他們能更有效地履行父母的天職或照顧者的責任，從而讓幼兒在適當的培育下健康愉快地成長。

Hong Kong Evangelical Church

Tai Hing Neighborhood Elderly Center

Since the transition to the Neighbourhood Centre, Tai Hing Neighborhood Elderly Center has provided a wider range of services for the elderly, including: Carer Support Service, volunteer services, hidden elderly services, case work, elderly dental services, and providing unified assessment service for admission to Care and Attention Homes for the Elderly through the Standardised Care Need Assessment Mechanism for Elderly Services.

Now, there are a large number of members in the centre who are mainly living in Tai Hing Estate or nearby in Tuen Mun. We enable them to learn different skills, including learning how to use I-PAD, softball classes and some Cognitive impairment training, etc.

Besides, we also work with Food Angel to provide free lunch and dinner services for the needy elderly, to solve the difficulties and financial burden of handling meals.

A four-month facility improvement project is carried out in January 2018. We expected to have a more comfortable environment and suitable services for the elderly in the district.

Hong Kong Evangelical Church

Bradbury Sheung Shui Family Centre

In recent years, Bradbury Sheung Shui Family Centre devoted to develop and promote early childhood development and parental education. We inspires children's potential and fosters self-confidence and good character through parent-child games, character education, parent-child companionship and diversified children activities. At the same time, we provide parents, children and other caregivers with a correct, simple and practical knowledge of child-rearing that goes hand-in-hand with their children's growth.



香港宣教會白普理上水家庭中心 綜合家居照顧服務隊

綜合家居照顧服務透過經驗豐富及受過專業訓練的工作人員和區內各服務單位的合作網絡，為體弱長者、殘疾人士及有特殊需要的家庭提供不同種類的照顧及服務。綜合家居照顧服務會按個別服務使用者的需要提供照顧及支援，以實踐「老有所屬」和「持續照顧」的理念，促使服務使用者繼續在社區中生活。

香港宣教會粉嶺家庭中心

粉嶺家庭中心本著耶穌基督愛世人的精神及回應區內居民的需要，提供家庭服務，以促進家庭和諧及功能並個人之福祉，令居民藉此得享豐盛生命。今年其中一項重點發展項目乃獲張慶華基金撥款資助，名為「青苗 360 培育計劃」，透過不同的項目，在「家庭」、「個人品格」、「知識」及「個人專長及興趣」等四方面，為北區的兒童及青少年建立支持系統、提供學習及全面發展的機會。另外，更開展特殊教育需要支援服務，與北區內幼稚園合作，推行 ADHD 早期介入服務計劃，支援懷疑或確診「專注力失調／過度活躍症」的兒童，提升他們的專注力，以減緩過度活躍徵狀，並推動整個家庭正面積極地面對兒童於學習及生活上所遇到的挑戰，營造家庭的支持環境。

Hong Kong Evangelical Church

Bradbury Sheung Shui Family Centre Integrated Home Care Services Team

Integrated Home Care Services (IHCS) provide a range of community support services to the elderly, people with disabilities and needy families living in the community with a pool of experienced and professionally trained staff, and via a network of service units in the community with its collaboration and support. The Integrated Home Care Services Teams (IHGSTs) provide care and support to the target service users according to their individual needs and actualize the concepts of 'Ageing in Place' and 'Continuum of Care' to enable the service users to continue living in the community.

Hong Kong Evangelical Church

Fanling Family Centre

Fanling Family Centre provides family services in the spirit of Jesus Christ's love of the world and in response to the needs of residents in the area to promote family harmony and function and personal well-being for them to enjoy their sumptuous lives. One of the key development projects of the year was funded by the Cheung Wing Wah Foundation. It was named "Youth 360 Development Programme" which establish a support systems to provide learning and comprehensive development opportunities for children and adolescents in the North District. In addition, we launched a Special Education Needs support services with kindergartens in North District to with a ADHD Early Intervention Service Scheme to support children who are suspected or diagnosed with "distraction/hyperactivity disorder" and enhance their concentration to alleviate over-activity. And also promote the entire family face the challenges of children's learning and life positively, and create a supportive family environment.

香港宣教會恩霖社區服務中心

香港宣教會恩霖社區服務中心一直以來，均以幼兒／兒童及家庭作為服務對象，不經不覺間在清河邨已服務了一段的時間（2009年中心在清河邨開辦服務），我們看著清河邨由往昔滿街小朋友的情況，開始逐步轉變為一個充滿活力的「年青屋邨」，而隨著小朋友升上中學，很多婦女亦可以有部份時間外出工作。

隨著社區的轉變，未來中心亦將會配合，而開展更多青少年義工及婦女小組，如：社區義工小組、社區經濟小店宣傳小組、婦女車衣隊、婦女義工探訪小組等等…。另外社區網絡的建立亦是中心不斷進行的工作，中心希望在社區中建立「燈塔」的角色，讓邨內的居民遇上困難時，可以第一時間想起中心來，到中心裡尋求支援。

香港宣教會學校服務隊

因應社會學童學業及情緒問題日趨嚴重，學校服務隊同工們在學校內除了帶領活動外，亦要小心留意不同學童的情緒變化，隨時與駐校社工為學童作緊急的跟進。另隨著「一校一社工」的政策推出，很多中心原有的駐校社工亦開始思考離職，轉為直接由學校聘任，對服務的承傳有一定的影響。

隨著未來政策上的轉變，「一校一社工」及「諮詢、督導」服務將會是危亦是機，由於中心早年已預備了督導服務的人手，再加上多年來累積起的經驗，對於承接「諮詢、督導 社工」的服務有一定的信心，另隨著同工的年資加深，日常學校服務的工作更加駕輕就熟，即可以有更多的空間，發展更多不同的學校服務。

Hong Kong Evangelical Church Yan Lam Community Service Centre

HKEC Yan Lam Community Service Centre has been serving children, children and families for a long time. It has been serving in Ching Ho Estate for years (the centre opened in Ching Ho Estate in 2009). In the past, it was an estate full of young children and full time mum. Years by years, now it is a estate which full of youth and ladies who are working partime.

With the transformation of the community, we carry out more youth volunteers and women's groups, such as community volunteer groups, community economy store promotion groups, women's car teams, women volunteers visiting teams, etc...). In addition, the establishment of the community network is also the ongoing work of the center. The center hopes to establish a "lighthouse" role in the community. When the residents in the village encounter difficulties, they can think of the center as soon as possible and seek support from the centre.

Hong Kong Evangelical Church School Services Team

In response to the growing academic and emotional problems of children, in addition to leading activities, school services team co-workers should also pay attention to the emotional changes of different school children and make emergency follow-up with school social workers. In addition, with the policy of "one school, one social worker", many of our social workers began to think about leaving their posts and switched to direct employment by the school, which has a certain impact on the inheritance of services.

With the change in policy in the future, it is threat but also opportunity. It is because the center has already prepared the staff for supervision services in the early years, plus the accumulated experience over the years. As the seniority of the co-workers deepens, the daily school service work is more familiar, that is, there can be more space to develop more different various of school services.

香港宣教會恩全鄰舍中心

我們以「睦鄰社區」及「全人發展」為服務方向，為區內的居民、家長及中小學生提供一站式的支援性和發展性服務。中心的宗旨是『與你一起締造豐盛人生、健康家庭、和諧社區』。

今年中心服務有：

1. 援助低收入及貧困家庭，開展「愛心糧倉－短期食物支援服務」
2. 鼓勵老有所為及關愛長者，推展「耆樂融融表關愛－長者支援服務」
3. 促進家庭關係及親職教育，推出「滿JOY樂園輔導服務計劃」
4. 提升小學生全人成長，開設「茁苗成長路－支援服務」
5. 支援受情緒困擾的人士及家庭，提供「全人輔導－個人及情緒輔導服務」
6. 關愛獨居及兩老長者全人健康，提供「愛心午膳吃得樂服務計劃」

香港宣教會恩錫鄰舍中心

香港宣教會恩錫鄰舍中心希望能結合教會及中心資源，以建構友善家庭及睦鄰社區為目標。中心在碩門邨定期舉辦有益身心的活動，亦因應屋邨人口特色和需要，提供靈活及具彈性的支援和發展服務，達至減少各類家庭及社區問題的發生。

- 提升英語能力課程
- 兒童及家長服務
- 個人輔導及轉介服務
- 宗教輔導及生活教育
- 長者服務

Hong Kong Evangelical Church Yan Tsuen Neighborhood Center

HKEC Yan Tsuen Neighborhood Center serves the residents, parents and primary and secondary students in Hong Kong with one-stop, supportive and developmental services based on the principle of "neighborhood-friendly" and "holistic development".

This year, our core services are:

1. To assist low-income and needy families to carry out "Love Granaries - Short-Term Food Support Services"
2. Encourage care for the elderly and promote the "Saints Sharing Quartet - Elderly Support Services"
3. To promote family relations and parenting education and launch "JOY Paradise Mentoring Program"
4. To enhance the growth of children and to set up "Growing Up Roads - Support Services"
5. Support "Emotional Counseling - Personal and Emotional Counseling Services" for Emotional People and Families
6. To care for the well-being of both single-aged and elderly people living in Hong Kong, and to provide "Love Lunch Delight Service Plan"

Hong Kong Evangelical Church Zion Neighborhood Centre

HKEC Zion Neighborhood Centre aims to provide flexible support and development services to reduce the incidence of various types of families and communities in Shek Mun Estate.

This year, our core services are:

- Accelerated English Scheme
- Children and Parent Service
- Personal Counselling and Referral Service
- Religion and Life Education
- Elderly Service

服務點滴

SERVICE HIGHLIGHT

扶老 Help the Elderly



強壯乃少年人的榮耀；白髮為老年人的尊榮。箴 20:29
The Glory of young men is their strength, and the honor of old men is their grey hair. Proverbs 20:29

綜合家居照顧服務

綜合家居照顧服務透過經驗豐富及受過專業訓練的工作人員和區內各服務單位的合作網絡，為體弱長者、殘疾人士及有特殊需要的家庭提供不同種類的照顧及服務。綜合家居照顧服務會按個別服務使用者的需要提供照顧及支援，以實踐「老有所屬」和「持續照顧」的理念，和促使服務使用者繼續在社區中生活。

Integrated Home Care Services

Integrated Home Care Services (IHCS) provide a range of community support services to the elderly persons, people with disabilities and needy families living in the community with a pool of experienced and professionally trained staff, and via a network of service units in the community with its collaboration and support. The Integrated Home Care Services Teams (IHCS Ts) provide care and support to the target service users according to their individual needs and actualize the concepts of 'Ageing in Place' and 'Continuum of Care' to enable the service users to continue living in the community.



鄉郊社區網絡

香港宣教會白普理上水家庭中心長期採取主動外展方法，為北區偏遠村落居民服務。我們定期定點於鄉郊舉辦各類型活動，包括小組活動、探訪、講座、聯誼活動等。在人口較為密集的村落（如：古洞、坑頭、金錢、燕崗、河上鄉、蕉徑等），派有工作隊每星期2天到該村為居民提供身體檢查服務。並安排義工定期探訪在鄉郊居住的長者，在寒流及暴雨警告發出後，致電鄉郊區的長者，慰問他們的情況，指導他們採取安全措施及利用相關的社區資源。

Remote Villages Network

HKEC Bradbury Sheung Shui Family Centre has been taking an active outreach approach for long to serve residents living in remote villages in North District. We regularly hold different kinds of activities at certain locations in rural areas, including small group activities, visits, talks, and gathering activities, etc. We sent crews twice a week to the villages which are more populated (such as Kwu Tung, Hang Tau, Kam Tsin, Yin Kong, Ho Sheung Heung, Tsiu Keng, etc.) To provide body check services to the residents. We arranged volunteers to regularly visit the elderly who live in rural areas. And when there is cold current or rainstorms, the volunteers will call the elderly living in these rural areas to show care to them and teach them to take precautionary measures and use relevant resources in the community.

滅罪耆兵

今年香港宣教會白普理上水家庭中心連續第9年合辦滅罪耆兵計劃，提升予長者對罪案資訊的認識及觸覺，並於每年訓練了當中20位長者於社區內擔任滅罪大使，協助舉報罪案，透過短劇及派發宣傳單張於區內不同的活動或場所，宣傳防止被騙、協助舉報罪案的訊息。參加者透過小組訓練、參觀，以及實踐，提升個人對罪案的觸覺，發揮鄰里守望相助精神、防止被騙的意識。

Elderly Police Call

Elderly Police Call was a nine consecutive years-program. It has held to enhance the awareness and tactile information on crime awareness and sensitivity of the elderly. We have trained 20 elderly as anti-crime ambassador in the community; they performed drama in different community events and occasions to promote the message of anti-crime after series of training, visit and practice.



老有所為活動計劃 - 「恩霖無憂老友記計劃」

長者的精神健康很需要左鄰右里協助建立，故香港宣教會恩霖社區服務中心透過一系列促進精神健康的活動，鼓勵長者與鄰舍建立關係，鄰里之間互助互愛，讓長者在晚年不再感孤單寂寞，減低他們出現太多負面情緒的機會，同時提昇社區人士對精神健康的關注，讓他們了解精神病患的需要。

Opportunities for the Elderly Project

Bonding and network of neighbourhood is important for the mental health of the elderly. Therefore, HKEC Yan Lam Community Service Centre encourages the elderly to establish relationships with their neighbours through a series of activities to promote mental health. The neighbours help each other and love each other, so that they will no longer feel lonely, helping them lead a fruitful and joyful life. To reduce the chances of too many negative emotions, and raises the community's concern for mental health so that they understand the needs of mental patients.



耆樂融融表關愛

香港宣教會恩全鄰舍中心以獨居及兩老長者為對象，提供鄰舍網絡的健康及家居安全支援服務。組成義工網絡，為獨居、體弱長者提供探訪服務，促進長者身心健康。定期為長者進行健康檢查，舉辦健康教育、社區活動及互助小組，讓長者身心社靈各方面得到全人照顧。

Elderly Caring Project

Yan Tsuen Neighbourhood Centre is dedicated to providing health and home safety support services to its neighbors for single and elderly elders. We formed volunteers network to serve elderly who are living alone and frail elders, in order to promote physical and mental health of the elderly. Regularly conduct health check-ups for elderly people, conduct health education, life and death talks, community activities and mutual aid groups so that all elderly people in the community will be given full consideration.

愛心午間及晚間飯堂

對於一班獨居、體弱、難以自行煮食的長者來說，在家中煮一頓有菜有肉的家常便飯已不是當然之事，加上現時百物騰貴，在茶餐廳吃個午飯也要三四十元，有見及此，香港宣教會恩霖社區服務中心及香港宣教會大興長者鄰舍中心透過借食堂的資助，為合資格的長者和基層家庭提供熱食飯餐，以減輕生活負擔，幫助他們舒緩經濟困難，同時擴闊其社交圈子，建立支援及睦鄰網絡。

Love lunchtime and evening canteen

HKEC Yan Lam Community Services Centre and HKEC Tai Hing Neighbourhood Elderly Center provides hot meals for eligible elders and grassroots families through subsidies from Food Angel to help ease the burden of living and help them to ease their financial difficulties. In addition, to broaden their social life and build support and good neighbor networks.



耆樂為您思 - 長者康樂及發展性小組

我們各服務單位均致力推動長者健康、康樂及發展性活動，鼓勵長者多接觸群眾，發揮和發展才能，提倡長者關注社區和自身的身、心、靈健康。如：香港宣教會恩霖社區服務中心透過多元化的活動，包括每週小組：「松柏卡啦 OK 健體坊」、「長者中文識字班」、「長者也識經」、「福音小組」等小組發掘長者興趣，靈智教育讓生命影響生命，並促進溝通，提升彼此關係。

此外，各中心每月也有健康講座、長者義剪、旅行、生日會及每週例會暨健康檢查及「打氣食物包」，可讓長者了解自身的健康狀況，並將知識帶到社區，改善生活，同時長者嘗試不同的體驗活動，包括生命教育、改善家居、郊區郊遊，社區文化體驗活動等，豐富長者的生活色彩，擴闊社交圈子，讓長者樂活在社區，推動社區和諧。再者，本中心每週也有定期派發不同類型的食品為長者打打氣，送上點點的心意。

Elderly Recreation and Development Group

All of our service units are committed to promote healthy, recreational and developmental activities for the elderly, encourage the elderly to reach out to the public, and to develop and develop their talents. The elderly are encouraged to get involved to the community and their physical, mental and spiritual health. For example, HKEC Yan Lam Community Services Centre has a wide range of activities including the monthly group: "Elderly Karaoke", "Elderly Chinese Literacy Class", "Elderly Bible Group" and "Gospel Group". In addition, each centre also has monthly health talks, elderly hair cut, travel, birthday parties, weekly meetings, health check-ups and "food packages" to help the elderly understand their health and deliver more knowledge to them to improve their lives. At the same time, the elders try different activities, including life education, home improvement, suburban outings, community cultural experience activities, etc., to enrich their life, broaden the social network, let them to live in the community and promote community harmony.

支援身體機能有輕度缺損的長者試驗計劃

「居家安老為本，院舍照顧為後援」是大部分長者的意願，很多長者都希望在熟悉的環境安老，並繼續得到親友和鄰居的照顧和支援。香港宣教會恩霖社區服務中心運用關愛基金推行「支援身體機能有輕度缺損的長者試驗計劃」旨在為經評估為身體機能有輕度缺損的低收入長者提供所需的家居照顧及支援服務，包括個人照顧、簡單護理、一般運動、家務料理（如家居清潔）、護送服務，以及購物及送遞服務等，按長者的需要制定其個人照顧計劃，以確保長者獲得適切的服務，讓長者可繼續居家安老。

Pilot Scheme on Home Care and Support for Elderly Persons with Mild Impairment

A three-year "Pilot Scheme on Home Care and Support for Elderly Persons with Mild Impairment" ("Pilot Scheme") launches in December 2017 by the Community Care Fund (CCF) to provide home care and support services to low-income elderly persons with mild impairment. Services including meal and/or home services, which include personal care, simple nursing care, physical exercise, home-making (e.g. home cleaning), escort, purchase and delivery of daily necessities, etc.



地區伙伴合作長者活動

香港宣教會大興長者鄰舍中心為退休人士及長者提供多樣社區支援服務，讓他們保持健康活躍生活，積極樂頤年。近年致力與不同團體合作，推出創新服務以提升長者參與社區及發揮潛能的機會。

「幼老有笑」義工探訪

由一班有志服務社群的在職人士 - 「青春耆」義工為中心會員提供服務，由策劃活動，到中心探訪長者，關懷社區有需要人士。

共慶回歸顯關懷

參與由民政署策劃一系列慶祝活動，透過舉辦探訪日及特色參觀活動，與長者一同慶祝香港回歸廿載。受訪者及參與參觀活動之長者均感到備受社區關顧及榮幸。

全港長者花式操

帶領中心會員參加第二十四屆全港長者花式操比賽，透過長者的興趣表達他們的活力，與社區義工一同合作，共建社區共融的力量。

Regional Partner Elder Activities

HKEC Tai Hing Neighbourhood Elderly Center provides a variety of community support services for retirees and elders to keep them healthy and active. In recent years, we have been working with different groups to launch innovative services to enhance the opportunities for the elderly to participate in the community and realize their potential.

Volunteers visit

A group of volunteers who are interested in serving the community provide services to members of the Center. They plan activities and visit the elderly and the needy in the community.

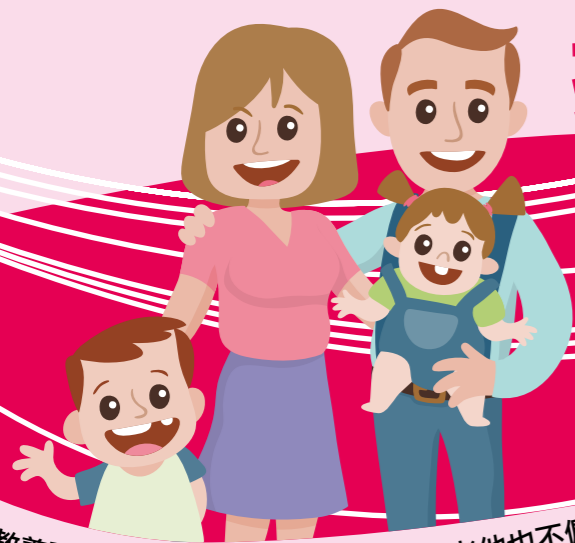
Celebrations for All Project

We join the "Celebrations for All" Project which is one of the major events to celebrate the 20th anniversary of the establishment of the Hong Kong Special Administrative Region. Co-ordinated by the Home Affairs Department and implemented by non-governmental organizations (NGOs) in the 18 districts, the project consists of three components, namely home visits, facilitating participation of the less privileged in territory-wide celebratory activities, and district celebration events.

Elderly Gymnasium Dance Show

We lead our members to participate in the 24th Hong Kong Rhythmic Gymnastics Festival. The festival provided a great opportunity to elders to show their talent and interests, and also work with community volunteers to build the power of community integration.

攜幼 Nurturing Kids



教養孩童，使他走當行的道，就是到老他也不偏離。箴言 22:6
Start children off on the way they should go,
and even when they are old they will not turn from it. Proverbs 22:6



童尋品格蛋

承蒙香港迪士尼樂園及其義工隊贊助及大力支持，童尋品格蛋是香港宣教會白普理上水家庭中心已連續 6 年舉辦的年度大型活動。我們每年復活節於迪欣湖活動中心舉行親子尋蛋活動，在湖邊不同角落藏起了接近一千二百隻「品格蛋」，讓家長與孩子一起化身成為可愛的小白兔，與孩子到大自然，鼓勵家長身體力行，一起共渡充滿歡笑和汗水的開心時光之餘，同時播下品格建立的種子。

Character Egg hunting Activity

Thanks for the sponsorship and strong support of Hong Kong Disneyland and its volunteer team, the Character Egg Seeking Activity is the annual large-scale event held by the HKEC Bradbury Sheung Shui Family Centre for six consecutive years. Every Easter, we hold a family- egg-hunting activity at the Inspiration Lake Recreation Centre. We hid nearly 1,200 character eggs different corners of the lake, so that parents and children who dressed up like a cute little bunny can share their family day filled with laughter and sweat, while planting the seeds of character.



童心同行親子成長發展計劃

「品格教育及家長工作」是香港宣教會白普理上水家庭中心近年其中一項重點發展項目，我們提倡及早在幼兒階段，影響家長對兒童的培育態度和方法，推廣正向親職觀念至不同背景家庭（超過 600 個北區家庭），承蒙香港公益金的贊助，我們以提供優質社區資源及服務並推行親子遊戲的方式，幫助參與兒童建立良好品格及人際關係。同時，協助區內全職及在職家長建立培育兒童的正面價值及相關技巧，為家長加添親職正能量，建構開心愉快的親子互動和睦鄰友愛的社區生活環境。

Parent and Child Development Plan

Virtue Education and Parent Education is one of HKEC Bradbury Sheung Shui Family Centre's core development project in these few years, we highlight to influence the way and attitude of kids development in earlier stage and deliver positive values to families from different background. (over 600 families). With the sponsor from Hong Kong Community Chest, we provided community resources and promote parent and child activities to increase their awareness and skill of virtue development.



樂樂少年團

樂樂少年團是香港宣教會白普理上水家庭中心連續第九年的活動，此計劃由香港哥爾夫球會贊助，透過多元化的樂器團隊紀律訓練及高展示式的表演，提升區內青少年的正向價值觀及人際關係。他們透過不同樂器及步操訓練、訓練營及歷奇日，提升及發掘潛能，鞏固團員興趣發展的建立，以及責任感、紀律和團隊合作等正向品格。我們更藉著高展示的表演，近距離的演奏及分享團員的學習成果予其家長及社區人士，以此提升社區人士對青少年興趣發展需要的關注。

Scottish Instrument Band

This project has received sponsorship by the Hong Kong Golf Club held by the HKEC Bradbury Sheung Shui Family Centre for nine consecutive years. Through various orchestral disciplinary training and high-profile show, it promoted positive values among and deepened interpersonal relationships of the young people in the district. Through different musical instrument and marching training, training camps and adventures, they enhanced and explored their potentials, strengthened interest development as well as cultivated positive characters like sense of responsibility, discipline and teamwork, etc. Through high-profile show, near-distance performance and sharing of learning outcomes with participant's parents as well as people in the community, we aroused the concern of the people in the community about the interest development of young people.





品格小果子

在基督裡，聖靈所結的果子就是仁愛、喜樂、和平、忍耐、恩慈、良善、信實、柔和、節制。近年，香港宣教會白普理上水家庭中心均會在暑期、聖誕節及復活節三個長假期為幼兒們精心策劃一個培養九個聖靈果子的好品格訓練。透過各式各樣的活動，內容包括：自理訓練、社交技巧學習、福音分享、繪本閱讀、唱遊、戶外活動學習、棋盤遊戲、烹飪、小手工製作等，讓孩子們學習與人相處，建立自信心和培養良好品格，過一個又一個既充實又有意義的假期。

Character Training Program



In Christ, the fruits of the Spirit are love, joy, peace, patience, kindness, goodness, faithfulness, tender, self-control. Recent years, HKEC Bradbury Sheung Shui Family Centre has held a systematic and well-designed Character Training Program for toddlers during three long vacations in the summer holiday, Christmas and Easter. Through a variety of activities, including: self-care training, social skills learning, religious sharing, picture books read aloud, Sing and dance, outdoor activities learning, board games, cooking, craft that children learn to get along with others, to establish self-confidence and develop good character, in order to have a fulfilling and meaningful holiday.



生命成長計劃

每年暑期，我們各家庭中心服務單位都會為大家準備各式各樣的暑期活動。香港宣教會白普理上水家庭中心及香港宣教會恩霖社區服務中心的「生命成長計劃」，透過經歷為本的學習模式，從多元化的室內、室外活動及營會，與區內小一至中一孩子同渡一個既開心，又充實有意義的暑假。

Life and Growth Program

Every summer, each of our family center service units prepare various kind of summer activities for the students. The "Life and Growth Program" by HKEC Bradbury Sheung Shui Family Centre and HKEC Yan Lam Community Services Centre provided experiential learning from various indoor and outdoor activities to camps for primary one to secondary one students in the district so that they can have a happy, fulfilling and meaningful summer.



「童·喜·步」特殊教育需要社區支援服務

此乃「童·喜·步」特殊教育需要社區支援服務的服務宗旨。不經不覺香港宣教會恩霖社區服務中心的「童·喜·步」已服務區內有需要的家庭五年了，踏入第六個年頭，我們仍無忘當初設立服務時的初心，希望能夠透過一系列多元化及個別化的小組、單元活動，以及諮詢服務，陪伴服務對象及其家庭走過每一個成長的階段（如：幼兒社交溝通能力提昇小組、「講」清「講」楚幼兒語言理解及表達能力提昇小組、幼兒專注力小組、寫前及書寫能力訓練小組、多媒體學前語文學習小組及「童·喜·步」成長計劃等）。本年度我們積極地與不同的大專院校（香港大學言語及聽覺科學系、香港中文大學社會服務團、香港專業教育學院）合辦義工活動，希望讓社會上不同人士能夠透過與孩子的互動，看見孩子的潛能，讓孩子感受到適切的關懷。

Joyful kids, Hopeful Steps" Community Support Service in Special Educational Needs

This is the fifth year of "Joyful Kids, Hopeful Steps" Community Support Service in Special Educational Needs in Yan Lam Community Service Centre. We promote "early identification" and "early intervention", and aim to provide quality and all-pervading SEN support service to the community. We help children to learn joyfully and enhance their self-value. We also help parents to support their children hopefully, and experience care from society. This year, we also designed "Joyful Kids, Hopeful Steps" summer program to enrich their social and life experience, and also increase their learning effectiveness. This year, we actively co-organised volunteer activities with different tertiary institutions (The Department of Speech and Hearing Science of the University of Hong Kong, the Social Services Group of the Chinese University of Hong Kong and the Hong Kong Institute of Vocational Education). I hope that different people in the community can see children potential and allows the child to feel the appropriate care with their interaction.



滿 JOY 功課輔導服務計劃

教養孩子對於每一個家庭來說，都會面對大小不同的挑戰，而在大元邨有約三分之一成年人口，學歷只有小學程度或以下，他們面對的困難更多。香港宣教會恩全鄰舍中心透過開辦「滿 JOY 樂園功輔班」支援家庭，為弱勢和低收入家庭的小朋友提供學習支援和品格教育，採用小班教學模式，讓每個小朋友都得到貼心幫助和關顧。透過創意的親子活動，建立和諧的親子關係。透過一家人參與，鼓勵家人彼此分享心底說話，促進家庭凝聚力。香港宣教會恩全鄰舍中心每周會提供五天的功課輔導，每月提供一次良好品格訓練及親子家長講座活動，讓學生學習之餘，亦培養他們內在的品格。

Full JOY tutoring service

HKEC Yan Tsuen Neighborhood Center Launched the " Full JOY tutoring services" to support families, provide learning support and character education to children from disadvantaged and low-income families, and adopt a small-class teaching mode that every child to receive personal assistance and care.

Through the creation of a harmonious parent-child relationship through creative parent-child activities, family involvement is encouraged to encourage family members to share their warmth and to promote family cohesion.



『成為孩子的好教練』家長講座系列

近年學童情緒的需要備受關注，學業壓力、人際關係、成長中各種掙扎、家庭關係等等都影響著學童健康的成長，作為父母如何了解子女內心的壓力和需要？又如何能有智慧地與子女一同面對、建立他們的自信、陪伴他們同行成長路，將危機和負面情緒轉化為正能量？香港宣教會恩錫鄰舍中心在這一年內就著這幾個方向與伯特利輔導中心合辦了三個相關的家長講座：

主題包括：

- **高Q父母** — 如何做孩子的好教練？培養孩子的EQ、AQ自信心
- **考試攻略** — 如何為孩子在考試前作出準備？
- **暑期打機真難禁** — 家長如何和孩子在暑假建立一個打機協議？

Parenting Talk Series

HKEC Zion Neighborhood Centre held a series of professional talk at Shek Mun Estate for those parents who are from low-income families to arise their ability and skills of parenting.

Topics include:

- how to be a good coach for children? EQ training children, AQ self-confidence
- how to prepare for the child before the exam?
- how parents and children to establish an agreement of playing video game in the summer?



「李國賢兒童基金 - 樂啟航」計劃

我們深信培育孩子必須先由家庭著手，以學習理論為藍本的幼兒課程，配合正確的親職態度，能夠為嬰幼兒的成長奠定重要的基礎。有見及此，本年度香港宣教會恩霖社區服務中心參與了第三階段的樂啟航計劃，承蒙「李國賢基金會」的資助，我們於本年度服務了區內十一對嬰幼兒親子，並在服務過程中獲得一致的好評。

為了讓區內更多嬰幼兒親子能夠受惠，我們亦獲基金會邀請繼續參與第四階段的樂啟航計劃，希望能夠把正確的親職態度在區內傳揚。

Simon K Y Lee Children's Fund – FLY Project (“FLY IV”)

FLY Project is an evidence-based early intervention programme for enhancing the learning and development of preschoolers aged 1.5 from deprived families before kindergarten entry. It covers different aspects of child-development such as cognitive, preschool concept, language, social, gross and fine motor, behavior and parent-child relationship. HKEC Yan Lam community Community Service Center have also been invited by the Foundation to continue to participate in the fourth phase of the Simon K Y Lee Children's Fund, hope to promote the correct parental attitude in the region.



境外遊學服務

我們把社會工作及教育專業結合在一起，支援學生在香港，甚至前往中國內地、台灣、新加坡、澳門等不同的地方進行海外學習交流體驗。由香港宣教會學校服務隊有著富經驗的社工團隊支援學校的不同服務需要，因應老師、家長及學生的獨特需要，設計相關境外遊學服務內容，以助學校及學生的發展，透過經驗學習，讓學生親身到訪當地進行實地考察及體驗，遊學主題包括：國情教育、公共衛生、能源科技與環境等，切合學生的學習興趣和需要。



Foreign Study Tours

We combine social work and education profession together to support students to join study tours in Hong Kong. Some of them even go for learning exchange experiences in the Mainland, Taiwan, Singapore, Macau, etc. Our experienced social worker team school supported different service needs of the schools. They designed foreign study tour services according to the unique needs of teachers, parents and students to enhance the development of schools and students. Through experiential learning, students go to local or foreign places to conduct visits and explore themselves. The theme of study tours included national education, public hygiene, energy technology and environment, etc. to cater to the learning interest and needs of students.



成長的天空學生輔導服務

香港宣教會學校服務隊自二零零七年開始，與全港小學協辦推行為期三年（小四至小六）成長的天空計劃，推行一套識別工具及一系列預防性及發展性輔導活動。「服務隊」為小學生提供「發展課程」及「輔助課程」，協助學生掌握面對逆境的知識、技能和態度，激勵他們積極面對成長中可能遇到的挑戰；同時校方會識別出有較大成長需要的小學四年級學生，並提供介入式的課程，強化學生面對逆境的能力。

活動內容具多元化包括：優質教師工作坊、優質家長工作坊、輔助小組、挑戰日營、再戰營會、愛心之旅（社會服務）、黃昏親子營、家長教師分享會及結業禮。



Understanding Adolescent Project (Primary)

Our social workers give training on resilience to primary four to six students and provided parents education services with small groups, camps talks, and personal counseling the students knew themselves better and their abilities to face adversities were strengthened, so that the participant's life were stronger and their family relationship were deeper.



茁苗成長路

香港宣教會恩全鄰舍中心於暑期為低收入及單親家庭及其小朋友，舉辦為期兩個星期的「茁苗成長路」兒童暑期計劃活動，透過多元活動，培養孩子的品格，增強孩子與人相處的技能，加強與人合作，讓孩子的天賦才幹得以發掘及發展，孩子更樂意貢獻自己，服務社群。每一位小朋友都是可愛的小樹苗，我們都希望他們能夠在未來茁壯成長。為此，透過茁苗成長路活動，小朋友能夠培養良好品格，建立正面價值觀，並且在哥哥姐姐的同行下，一同面對成長的困難，邁向健康成長的道路。當中更有 2 日 1 夜的宿營活動，為小朋友留下美好回憶。

Summer Program

During summer holiday, HKEC Yan Tsuen Neighborhood Center organizes a four-week "Child Development" summer program for low-income, single-parent families and their children to cultivate children's character and enhance their child-related skills through diversified activities. Strengthen cooperation with others to enable children's talent to explore and develop, children are more willing to contribute to their own community.



「以動制動」ADHD 早期介入服務計劃

香港宣教會粉嶺家庭中心與北區內幼稚園合作，推行為期八個月 ADHD 早期介入服務計劃。計劃名稱中的第一個「動」，是指訓練活動、及家長的主動介入，意指透過這兩項要素，支援懷疑或確診「專注力失調／過度活躍症」的兒童，提升他們的專注力，以減緩過度活躍徵狀。計劃針對兒童的個人需要，提供「專注力訓練小組」的小組訓練外，亦相當重視家長的參與對兒童成長發展的重要。故此，計劃亦透過「農田親子樂 - 戶外訓練」、「家庭遊戲訓練」等項目，一方面透過不同場境及形式的訓練活動，以強化有 ADHD 徵狀兒童的專注能力，另一方面亦旨在推動整個家庭正面積極地面對兒童於學習及生活上所遇到的挑戰，營造家庭的支持環境。

ADHD Early Intervention Service Plan

HKEC Fanling Family Centre works with kindergartens in North District to implement an eight-month ADHD Early Intervention Service Plan to support children who are suspected or diagnosed with "distraction/hyperactivity disorder" and enhance their concentration to alleviate over-activity. We provides training for the needy children to enhances the concentration of children with ADHD symptoms through training activities in different ways through the "Farming for Family Fun - Outdoor Training" and "Family Game Training" programmes. And also promote the entire family face the challenges of children's learning and life positively, and create a supportive family environment.



青苗 360 培育計劃

香港宣教會粉嶺家庭中心的「青苗 360 培育計劃」由張慶華基金撥款資助，服務計劃由 2017 年 4 月展開，為期一年。

計劃宗旨

- 1) 支援北區兒童及青少年的成長發展；
- 2) 透過「家庭教育」，加強北區家庭對兒童及青少年的系統支援；
- 3) 透過「品格培養」，提昇兒童及青少年的個人質素；
- 4) 透過「學習支援」，提昇兒童及青少年的自學能力及學習動機；
- 5) 透過「個人專長及興趣」發展，給予北區兒童及青少年的全面發展機會。

計劃內容

在計劃推行期間，透過不同的項目，在「家庭」、「個人品格」、「知識」及「個人專長及興趣」等四方面，為北區的兒童及青少年建立支持系統、提供學習及全面發展的機會。項目包括：家長互助小組、家長管教／認識孩子發展需要講座、成立親子讀書會、親子戶外活動、小學生成長小組、輔導性質小組、功課輔導、成立青少年籃球隊等，以實踐計劃宗旨。



Youth Development Project

Youth Development Project is funded by the Cheung Hing Wah Charitable Foundation Limited held by the HKEC Fanling Family Centre. The service is launched in April 2017 for a period of one year.

Program objection

- 1) Support the growth and development of children and adolescents;
- 2) Enhance the systemic support of children through "family education";
- 3) Enhance the personal qualities of children and adolescents through "Character Development";
- 4) Enhance the self-learning ability and motivation of children and adolescents through "learning support";
- 5) To provide comprehensive development opportunities for children and young people through the development of "personal expertise and interests".

Program

In the project, we establish support systems to provide learning and comprehensive development for children and young people in the North District through various projects in the areas of "family", "personal character", "knowledge" and "personal expertise and interest". The project includes: parental support group, parental discipline/recognition of children's development needs lectures, establishment of parent-child reading clubs, parent-child outdoor activities, primary school growth group, counseling group, homework counseling, and establishment of youth basketball team.





「你要盡心、盡性、盡力、盡意愛主你的上帝；又要愛鄰舍如同自己。」路加福音 10:27
He answered, "Love the Lord your God with all your heart and with all your soul and with all your mind and, Love your neighbor as yourself." Luke 10:27



愛心午膳服務計劃

民以食為先！原來很多基層及貧困居民真是餐餐餐餐餐清，甚至一日三餐難繼。貧窮的獨居長者及兩老長者大多數因省吃儉用，一碟餸分幾餐食，既不健康又沒營養。貧困長者很多只能拾賣剩菜，少有魚肉，營養不足，不利健康。香港宣教會恩全鄰舍中心為區內貧困長者提供富營養的免費午餐。更推動義工定期探訪獨居及兩老長者，長者們很欣賞中心的全人周到照顧。

Caring lunch service plan

HKEC Yan Tsuen Neighborhood Center provides free nutritious lunches to needy elders in the community. It also promoted volunteers to visit the elderly living alone and the elderly on a regular basis. The elderly enjoyed the whole person's attentive care.



愛心糧倉 - 短期食物支援服務

香港社會貧富不均，社會上仍有不少貧困人士及低收入家庭生活在貧窮線下，每日三餐的基本生活開支有困難，需要在食物及情緒上得到支援。服務對象每個星期五下午到香港宣教會恩全鄰舍中心領取食物，中心職員及義工會與每一位服務對象個別會談，聆聽心事，表達關懷，更有機會送貨服務，透過家訪認識其他家庭成員。每月一次有午餐愛筵，在溫暖環境及氣氛融洽之心境中，彼此自由暢懷分享，建立了一份情誼。並願意成為義工探訪街坊！

Love Bank

There are still many poor and low income families living below the poverty line in Hong Kong. They have difficulty in paying their basic living expenses, and facing both physical and psychological needs. Therefore, the served families are being provided food support by HKEC Yan Tsuen Neighborhood Center every Friday. The staffs of our centre and volunteers serve the families through talking to each individual family, listen to their stories and even deliver food to their home. The relationships between them have been built through home visits.

Besides, "Love Feast" is held every month with free sharing under a warm environment and a harmony atmosphere, their friendship was built successfully.



北區基層社區經濟網絡計劃

承蒙香港公益金資助，香港宣教會恩霖社區服務中心以新界北區低收入公屋戶、劏房住戶、綜援、書簿津貼、低收入在職家庭津貼鼓勵就業交通津貼及 / 或關愛基金受助者 / 住戶為服務對象，推行民間互惠市場項目、城鄉共生」北區基層導賞項目及「自家」產品及服務互惠網絡項目，於北區推動基層需要為本的社區經濟，建立合作網絡平台，發揮區內基層居民的專長技能，讓基層居民得以藉此提升收入、紓緩開支，提升生活質素，並強化弱勢基層居民的社會資本。促進基層居民提升自我肯定及效能感，重新建立自我價值與尊嚴，由被忽略及邊緣化的受助弱勢群體，轉化為自主的社區生產者、服務提供者，為弱勢基層居民充權。發揮區內居民擁有未受市場利用的才能、技術與經驗，服務其他社群的成員，共享區內未受利用的資源，包括各方剩餘物資、區內的閒置空間、地區的歷史文化及生態環境等，促進地區經濟多元及可持續發展，開拓弱勢基層居民的謀生空間。

North District Grassroots Community Economic Network Plan

With the sponsor by The Hong Kong Community Chest, HKEC Yan Lam Community Service Centre serve a low-income public housing estate, mortuary tenant, recipients with government subsidy(CSSA, booklet Allowance, low-income Working Family Allowance in to Encourage Employment Transport Allowance and/or Care Fund) with reciprocal market projects, urban and rural program, North District grassroots guided tours and DIY Products. To promotes the community-based community economy in the North District and establishes a network of partnerships to leverage the expertise of the grassroots residents in the district to enable the grassroots to enhance their income, ease their expenditure and enhance their quality of life. And strengthen the social capital of the disadvantaged grassroots residents. Promote grassroots residents to enhance their sense of self-affirmation and efficacy, re-establish self-worth and dignity, transform the weakened groups that are neglected and marginalized into independent community producers and service providers, and empower the vulnerable grassroots residents. To bring talents, technologies and experience of residents in the region that are not used by the market, serve members of other communities, and share unused resources in the area, including the remaining materials of the parties, the idle space in the area, the historical culture and ecology of the area etc. To promote the diversification and sustainable development of the regional economy, and open up the living space of the disadvantaged grassroots residents.





新邨新情 - 祥龍圍社區鄰里網絡計劃

承蒙社區投資共享基金撥款，香港宣教會恩霖社區服務中心於北區新落成屋邨祥龍圍邨推行新邨新情 - 祥龍圍社區鄰里網絡計劃，於祥龍圍邨舉行居民互動街站、社區活動、樓層聯合洗樓探訪行動、興趣技能交流小組、新居民適應小組、樓層鄰里網絡行動，物資 / 技藝分享交流平台及社區居民義工小組。

目的：

1. 強化鄰里關係，組織居民網絡，促成居民之間的互助，共同面對生活問題。
2. 結連各社區持分者、邨內鄰舍的關係資源，識別、支援有需要的居民，加強其與鄰舍、各社區持分者的結連，讓其得到穩定的支援及承託。
3. 轉化新邨居民成為各式服務之提供者，分享自己的愛心及技藝，貢獻社區，促進居民之間的交流及互動，肯定居民的自我價值。

“New Estate with New Relationship”

– Cheung Lung Wai Community Neighborhoods Network Project

Thanks to the sponsor from Community Investment and Inclusion Fund (CIIF), HKEC Yan Lam Community service Centre has launched a three-year plan called “New Estate with New Relationship – Cheung Lung Wai Community in North District. Through developing neighborhood network, it encourage the residents in the new estate to help and benefit each other, fostered cohesion and support in the community. Through various activities, it fostered an atmosphere of harmony in the community, promoted life exchanges, as well as addressed the needs of the needy and the whole community in the estate. The project also connected different stakeholders in the community, including the organizing officer, businesses, schools, residents as well as church organizations so that it established information flow and communication. It also coordinated different people to address the needs of the estate, and it allowed needy neighbors to support one another. Ultimately, through different levels of networking, it established social capital advantageous to building up the new community and thus supported the community.



香港宣教會大興長者鄰舍中心

— 長者義工黃美恩女士

我在中心當了四年義工。記得初時被邀請上門探訪服務，感到不習慣，因要接觸陌生人。後來慢慢習慣了，亦喜歡了擔負義工的工作，因可與不同的人溝通、幫助有需要的人。「能力做到的就做」是我的信念，望以我僅有的祝福他人。在過程中，自己亦有所得，真正是「助人自助」。

香港宣教會大興長者鄰舍中心

— 長者義工劉容少女士

自 2007 年入會起，就在中心當義工。隨著退休而來的空閒，希望透過當義工幫助別人、娛樂自己。在這十年間，當過不同類型的服務，如當值大使，協助中心活動等。一邊做一邊學，不同的義工訓練使我備受裝備，充實自己。

「助人助己，有所學習；服務開心，不望回報。」

綜合家居照顧服務隊

— 鄭婆婆

轉眼間，鄭婆婆已使用了綜合家居照顧服務十六年了，由起初在朋友的介紹下，申請了本隊送飯服務作基本的協助，隨著時間流逝，鄭婆婆身體狀況亦開始轉變，而各項的家居服務亦因應作出不同支援。鄭婆婆十分感謝本隊一直以來悉心的照顧，服務讓她減輕了自我照顧上的困難。現在，她的行動不太方便，外出的時間減少了，她亦感激同事每天到戶服務時的問候與關懷，讓她感到十分溫暖。

綜合家居照顧服務隊

— 孫女士

孫女士現正進行療程，在治療期間，孫女士身體狀況變得不穩定，雖然在國內居住的母親可申請雙程證到港照顧她，但在續證期間出現了照顧上的真空期，而因同住的家人需上班上學，亦未能時刻照顧，因此孫女士申請了綜合家居照顧服務以作支援。由於孫女士在港的支援薄弱，起初面對生活及身體上的轉變實是有點徬徨，幸好綜合家居照顧服務對她作出及時支援，解決了她的燃眉之急，而服務亦減輕了家人照顧上的壓力。孫女士期望服務可以繼續幫助有需要的人，在社區散播溫暖。

「李國賢兒童基金 — 樂啟航」

計劃服務使用者 — 姚太

上一年，有幸參加到恩霖社區服務中心所提供嘅樂啟航課程。先講仔仔，可以令佢嘅學前，對個人自理、待人接物、群體生活有基本嘅概念，對佢而家開始返幼稚園，有好大幫助。而親職課程，亦令我呢個新手媽媽嘅教養仔仔問題上徬徨無助嘅時候，搵到支援同方向。對於中心嘅姑娘同老師，我心裡面嘅感激用文字係表達唔到架！

「李國賢兒童基金 — 樂啟航」

計劃服務使用者 — 樂樂媽媽

參加樂啟航計劃後仔仔學到好多從未接觸過的新知識，更學到怎樣與小朋友相處，活動過程亦令到仔仔喜愛上學，幫助到仔仔將來對入學的恐懼，而我亦學到怎樣與仔仔溝通，增加良好的親子關係，遇到問題時，老師，姑娘和家長們亦會在課堂上一起討論和分析，衷心感激樂啟航帶給仔仔一個健康成長的過程！

境外遊學服務 — 中華基督教會元朗真光小學

學校舉辦了境外交流活動，校長、老師、家長義工聯同 60 名五年級學生一同到澳門進行為期三天的境外學習活動，並以「文化保育」為題，探索當地的世界文化遺產。是次境外交流目的旨在豐富學生的學習經歷，擴闊視野及培養學生的自理能力。

出發前，本校與宣教會學校服務隊同工協作分別為學生、家長及老師舉辦工作坊或講座，務求使大家對行程有深入了解，做足準備工夫。三天的行程中，學生以小組形式進行各項多元化的活動，當中包括考察、匯報、參觀和遊蹤等，同學都十分積極投入。另一方面，是次活動的景點十分豐富，有大炮台、澳門博物館、澳門科學館、大三巴、鄭家大屋、崗頂前地、觀光塔等地標，令同學們都大開眼界。

最有趣的是我們於觀光塔享用自助午餐時，同學能親眼目睹其他遊客玩「笨豬跳」，他們都不斷為遊客歡呼，表現得又驚又喜。

最後，三天的澳門之旅令學生成長了不少，除了需要學習如何與組員融洽相處，完成各項的學習任務外，他們還需要學習自己照顧自己，如整理床鋪、用膳禮儀、洗碗打掃等。在此特別感謝宣教會同事事前與本校的緊密聯繫，令行程中的活動安排十分暢順，除了能確保學生的安全，亦能令他們的視野得以擴闊。

境外遊學服務 — 天水圍循道衛理小學

「海、陸、空」是我校學生最期待的課程活動，四年級學生乘坐飛翔船到澳門探索古蹟保育的方法、五年級學生乘搭飛機越洋到新加坡體驗多元文化、六年級學生乘坐二十四個小時直通火車穿州過省，到首都北京對新舊文化進行考察……每次學習體驗，對同學來說都獲益良多。

要成就全級同學一起出發進行跨境學習活動，出發前、遊學期間，以及完成體驗後的跟進，其工作量對老師來說的確很龐大，慶幸我們能夠得到香港宣教會學校服務隊的協助，為我們在聯絡、行政工作上營造了不少空間，老師可以專注設計課程，讓學生在真實又有意義的經歷下學習。學校服務隊的同工亦富有豐富的經驗，擁有社工學歷的團隊在行程期間亦為學校提供學生情緒上的輔導。

每當學生雀躍地分享所見所聞，家長們欣喜若狂地分享子女的改變，我們更深信，學校的付出並沒有白費，這種「走出課堂」的學習體驗，讓孩子們能訂立更遠大的目標。

成長的天空計劃服務使用者

我最深刻的活動是「再戰營會」的夜行活動。我是十分怕黑的，初時一知道要夜行，我已經非常害怕及退縮，不想參與該活動，但幸好有導師及同學的鼓勵，令到我有信心，可以克服困難，我要感謝陪了我們三年的社工及姑娘。

成長的天空計劃導師

參與成長的天空計劃一年，我深深感受到成長的天空對學生的重要性，我觀察到他們面對困難時，普遍都會請別人幫忙，缺乏自己的思考。這情況主要基於家庭照顧十分足夠，很多大小事務都較少機會嘗試，以致他們缺乏解難的能力。

同時，學生的情緒都十分波動，因為在家庭中，他們只要發脾氣，就可以獲得他們想要的東西，這樣會嚴重影響他們的社交及溝通能力。

成長的天空計劃正正針對小學生的需要已設，故這一年我覺得自己做了一件很有意義的事情，便是成為小組導師，陪伴他們成長。



鳴謝 ACKNOWLEDGEMENT

2017/2018 本處及轄下各服務單位有賴下列機構及人士的協助，謹此致謝（排名不分先後）。如有遺漏，懇請見諒。

伯特利輔導中心
敬老護老愛心會
明愛屯門綜合家庭服務中心
張慶華慈善基金
北區公民教育委員會
青年事務委員會
社區投資共享基金
創毅物業服務顧問有限公司
教育局 - 教育統籌委員會及策劃分部延伸支援計劃組
青春耆
惜食堂
循理會屯門青少年綜合服務中心
北區民政事務處
懲教署
香港迪士尼樂園
香港哥爾夫球會
香港房屋委員會
香港史氏智能開發有限公司
香港基督教女青年會
香港基督教女青年會蝴蝶灣綜合社會服務處
IN 義工團
屯門區少年警訊
古天樂慈善基金
康樂及文化事務處
屯輝長者學苑
北區區議會
保良局志豪小學
悠悠教育基金
社會福利署
賽馬會屯門青少年綜合服務中心
基督少年軍 346 分隊
基督教信望愛堂
香港公益金
香港社會服務聯會
屯門青年協會
香港紅十字會
香港上海匯豐銀行有限公司
電影、報刊及物品管理辦事處
屯門警區警民關係組
屯門區議會
屯門區婦聯
基督教聯合那打素社康服務
北區青年活動委員會

On the behalf of beneficiaries, we extend our sincere thanks to all of them for supporting our work in the year of 2017/2018. Owing to limited space, we regret for being unable to print all their names. In case of any omissions, we apologize for any inconvenience caused.

Bethel Pastoral Counseling Centre
Care for the elderly Association Limited
Cartias Tuen Mun Integrated Family Service Centre
Cheung Hing Wah Foundation
Civil Education Committee (North District)
Commission on Youth
Community Investment and Inclusion Fund(CIIF)
Creative Property Services Consultants Limited
Education Bureau-Education Commission and Planning Division
Eldolescent
Food Angel
Free Methodist Church Leung Tin Children & Youth Integrated Services Centre
Home Affairs Department (North District)
Hong Kong Correctional Services
Hong Kong Disneyland
Hong Kong Golf Club
Hong Kong Housing Authority
Hong Kong Shi Intelligent Development Limited
Hong Kong Young Women's Christian Association
Hong Kong YWCA Jockey Club Butterfly Bay Integrated Social Service Centre
IN Volunteer Team
Junior Police Call (Tuen Mun)
Koo Tin Lok Charitable Foundation
Leisure and Cultural Services Department
Morning Hope Elderly School
North District Council
Po Leung Kuk Horizon East Primary School
Serenity Foundation
Social Welfare Department
The boys & Girls Assoication of Hong Kong-JC TUEN MUN C&Y ISC
The Boys' Brigade, Hong Kong, Team 346
The Christian the Faith Hope Love Church
The Community Chest of Hong Kong
The Hong Kong Council of Social Service
The Hong Kong Federation of Youth Groups
The Hong Kong Red Cross
The Hongkong and Shanghai Banking Corporation Limited
The Office for Film, Newspaper and Article Administration of the Hong Kong Special Administrative Region
The Police Community Relations Officer of Tuen Mun districts
Tuen Mun District Council
Tuen Mun Women Association
United Christian Nethersole Community Health Service
Youth Development Programme Committee (North District)



感謝支持 — 賣旗日 THANKS FOR SUPPORT — FLAY DAY

承蒙各界支持及指教，本會 2017/2018 年之新界區賣旗日於 2017 年 5 月 6 日（六）完滿結束。我們衷心感激各位慷慨解囊及支持，讓是次籌款活動得以順利完成並籌得善款 \$654,798，有關善款將用作支持本會各單位於 2018/2019 年度推行各項弱勢家庭服務之經費。

With the support by different people and sectors, the organization finished the 2017/2018 New Territories flag day on 6th May, 2017 (Saturday). We expressed our deepest thanks to all who had generously given and support so that the flag day successfully raised a total of \$654,798. The donations will be used as funds for launching different kinds of services for underprivileged families in 2018/2019.

中華基督教會元朗真光小學
CCC Chun Kwong Primary School

佛教志蓮小學
Chi Lin Buddhist Primary School

卓思教育
Choice Education

基督書院
Christ College

風采中學（教育評議會主辦）
Elegantia College
(Sponsored By Education Convergence)

播道書院
Evangel College

基督教粉嶺神召會小學
Fanling Assembly of God Church
Primary School

鳳溪第一小學
Fung Kai No.1 Primary School

基甸中心
Gideoncentre

香港宣教會優質幼兒學校
HKEC ELITE KINDERGARTEN

港澳信義會黃陳淑英紀念學校
HKMLC Wong Chan Sook Ying
Memorial School

香港聖公會麥理浩夫人中心
HKSKH Lady MacLehose Centre

香港道教聯合會純陽小學
HKTA Shun Yeung Primary School

晉色園主辦可譽中學暨可譽小學
Ho Yu College and Primary School

香港宣教會恩澤堂
Hong Kong Evangelical Church
Yan Chak Church

香港宣教會恩磐堂
Grace Hong Kong Evangelical
Church

香港宣教會恩溢堂
Hong Kong Evangelical Church
Yan Din Church

香港宣教會恩福堂
Hong Kong Evangelical Church
Yan Fook Church

香港宣教會恩基堂
Hong Kong Evangelical Church
Yan Kei Church

香港宣教會恩光堂
Hong Kong Evangelical Church
Yan Kwong Church

香港宣教會恩霖堂
Hong Kong Evangelical Church
Yan Lam Church

香港宣教會恩全堂
Hong Kong Evangelical Church
Yan Tsuen Church

香港宣教會恩溢堂
Hong Kong Evangelical Church
Yan Yat Church

香港宣教會恩盈堂
Hong Kong Evangelical Church
Yan Ying Church

香港宣教會恩耀堂
Hong Kong Evangelical Church
Yan Yiu Church

香港宣教會恩錫堂
Hong Kong Evangelical Church
Zion Church

香港宣教會恩言堂
Hong Kong Evangelical Logos Church

國際四方福音會
INTERNATIONAL CHURCH OF THE
FOURSQUARE GOSPEL

錦田公立蒙養學校
Kam Tin Mung Yeung Public School

天梯使團
Ladder Mission

樂道中學
Lock Tao Secondary School

五旬節靳茂生小學
Pentecostal Gin Mao Sheng
Primary School

香港神託會培基書院
Stewards Pooi Kei College

基督少年軍 145 分隊
The Boys' Brigade, Hong Kong,
Team 145

基督少年軍 232 分隊
The Boys' Brigade, Hong Kong,
Team 232

基督少年軍 272 分隊
The Boys' Brigade, Hong Kong,
Team 272

基督少年軍 346 分隊
The Boys' Brigade, Hong Kong,
Team 346

香港基督女少年軍第 29 及 36 分隊
The Girls' Brigade Hong Kong,
Team 29, 36

鄰舍輔導會東涌綜合服務中心
The Neighbourhood Advice-Action
Council Tung Chung Integrated
Services Centre

天水圍循道衛理小學
Tin Shui Wai Methodist
Primary School

職業訓練局青年學院（葵芳）
VTC Youth College(Kwai Fong)

仁濟醫院永隆幼稚園 / 幼兒中心
Yan Chai Hospital Wing Lung
Kindergarten

錫安社會服務處
Zion Social Service

感謝支持 — 敬老護老愛心券 THANKS FOR SUPPORT — CHARITY TICKET FOR RESPECTING AND CARING THE ELDERLY

本會 4 個服務單位由 2002 年開始參與敬老護老愛心會舉辦的「敬老護老愛心」慈善籌款運動，一直深受各界熱心人士鼎力支持，以使有需要的長者服務能得以推展。

Four of our service unit started to participate in the "Charity Ticket" organized by the Care for the Elderly Association Limited. We have received longstanding and generous support by enthusiastic donors from different sectors, so that we can develop various of elderly service for needy in the community.

中華基督教會元朗真光小學
CCC Chun Kwong Primary School

風采中學（教育評議會主辦）
Elegantia College
(Sponsored By Education Convergence)

基督教粉嶺神召會小學
Fanling Assembly of God Church
Primary School

港澳信義會黃陳淑英紀念學校
HKMLC Wong Chan Sook Ying
Memorial School

五旬節靳茂生小學
Pentecostal Gin Mao Sheng
Primary School

保良局田家炳小學
PLK Tin Ka Ping Primary School

香港基督少年軍第 232 分隊
The boys brigade, Hong Kong
Team 232

天水圍循道衛理小學
Tin Shui Wai Methodist Primary
School

曾梅千禧學校
Tsang Mui Millennium School

仁濟醫院永隆幼稚園 / 幼兒中心
Yan Chai Hospital Wing Lung
Kindergarten



各服務單位服務數摘要

SERVICE STATISTIC FIGURES

各單位接受個案 Number of Cases

大興長者鄰舍中心

Tai Hing Neighbourhood Elderly Center

會員人數 Number of Members		偶到服務 Walk-in Services (Person Times)	開放節數 Opening Session (Sessions)	全年舉辦的小組、 活動數目 Total number of groups and activities(Annual)	服務推廣 / 建立策略 夥伴數目 Service Promotion and Strategic Partner	統一評估服務 Standardised Care Need Assessment
長者 Elderly	1,043	39,252	447	248	16	58
義工 Volunteer	116					
護老者 Care giver	146					
個案 Cases	154					
服務隱蔽或 需要照顧長者 Hidden and vulnerable elder	72					

白普理上水家庭中心

Bradbury Sheung Shui Family Centre

會員人數 Number of Members		偶到服務 Walk-in Services (Person Times)	諮詢服務 Enquiries (Person Times)	開放節數 Opening Session (Sessions)
個人會員	1,865	37,285	44,523	716
家庭會員	6,928			

白普理上水家庭中心綜合家居照顧服務隊

Bradbury Sheung Shui Family Centre Integrated Home Care Services Team

個案類別 Type of Cases	長者個案 Elderly	傷殘個案 Disabled	家庭特殊需要個案 Special Family Need	特別體弱個案 Frail	總個案 Total
	828	29	36	10	903

粉嶺家庭中心

Fanling Family Centre

會員人數 Number of Members	偶到服務 Walk-in Services(Person Times)	諮詢服務 Enquiries (Person Times)	開放節數 Opening Session (Sessions)
1,916	5,460	362	544

恩霖社區服務中心

Yam Lam Community Service Centre

會員人數 Number of Members	偶到服務 Walk-in Services(Person Times)	諮詢服務 Enquiries (Person Times)	開放節數 Opening Session (Sessions)
1,709	35,712	48,063	774

恩全鄰舍中心

Yan Tsuen Neighbourhood Center

會員人數 Number of Members	偶到服務 Walk-in Services(Person Times)	諮詢服務 Enquiries (Person Times)	開放節數 Opening Session (Sessions)
120	250	300	520

服務統計 Services Statistic

白普理上水家庭中心

Bradbury Sheung Shui Family Centre

服務類別 Services Item	活動次數 Number of Services	服務人次 Person Times
課餘託管服務 After School Care	207	7299
幼兒親子活動 Early Childhood and Family Activities	3,266	35,926
兒童、青少年發展及成人興趣小組 Children, Teenagers development and Adult's interest group	1,398	19,572
家庭及社區教育活動 Family and Community Education Activities	421	20,582
鄉郊服務 Rural Service	45	8,865
長者社群發展活動 Elderly Social Development Activities	420	9,478
家居支援服務 Home Care Service	10,674	10,674
合共服務 Total Services	16,431	112,396

白普理上水家庭中心綜合家居照顧服務隊

Bradbury Sheung Shui Family Centre Integrated Home Care Services Team

服務類別 Services Item	活動次數 Number of Services	服務人次 Person Times
家居服務 Home Care Service	75,842	7,032
護理服務 Nursing Service	1,993	1,429
社交活動 Social Activities	12	1,752
合共服務 Total Services	77,847	10,213

粉嶺家庭中心

Fanling Family Centre

服務類別 Services Item	活動次數 Number of Services	服務人次 Person Times
託管服務 After School Care	120	835
功課輔導 Tuition	595	4920
青少年成長及培育活動 Youth Development	232	1947
兒童教育課程 Children Education	816	7207
兒童興趣課程 Children Interest Group	480	3479
社區活動 Community Program	39	2151
家長教育課程 Parenting Program	36	369
家長興趣課程 Parent Interest Group	56	346
家庭活動 Family Program	27	1202
圖書閣服務 Library		1600
義工服務 Volunteer Service	18	426
合共服務 Total Services	2419	24482

恩霖社區服務中心

Yam Lam Community Service Centre

服務類別 Services Item	活動次數 Number of Services	服務人次 Person Times
靈智及生命教育活動 Regligious Services and Life Education Activities	104	1,458
課餘託管服務 After School Care	585	21,265
特殊教育需要、幼兒及親子小組 / 活動 Special Education Needs, Early Childhood and Family Activities	289	6,145
居民網絡及支援服務 Community Network and Supporting Service	1,244	14,939
長者資源及支援服務 Elderly Service	233	7,293
兒童 / 青少年興趣小組 / 活動 Children and Youth Program	2,932	14,156
其他社區參與及創新服務 Other Community Program and Pioneer Service	185	2,206
合共服務 Total Services	5,572	67,462

恩全鄰舍中心

Yan Tsuen Neighbourhood Center

服務類別 Services Item	活動次數 Number of Services	服務人次 Person Times
愛心糧倉短期食物支援計劃 Love Food Bank	58	232
耆樂融融表關愛 Elderly Program	4	120
愛心午膳吃得樂 Love Luncheon	26	780
茁苗成長路 Summer Program	9	180
滿 JOY 功課輔導服務計劃 After-School Care Services	200	5,000
街頭煙火社區 Community Activity	12	2,000
興趣班 Interest Group	50	300
家長講座 Parenting Talk	6	180
合共服務 Total Services	365	8,792

學校服務隊

School Services Team

服務類別 Services Item	學校數目 School	組 / 團 Group	日數 / 次數 Days/Times	服務人次 Person Time
全方位學生輔導服務 Comprehensive Student Guidance Service	6		1,130	28,250
成長的天空計劃 (小學) Understanding Adolescent Project	29	78 組	577	10,348
特殊教育需要社區支援服務 Special Educational Needs Support Service	6		180	5,732
新來港學童支援服務 New Arrival Students Support Service	4		24	428
駐幼稚園社工輔導服務 Kindergarten Stationing Guidance Service	1		25	330
校本課後學習及支援計劃 School-based After School Learning and Support Programmes: Community-based Projects	9		324	27,145
境外遊學服務 Outbound Study Tour Service	10	13 團	78	3,062
家長及學生成長 Parenting Education and Student Development	47		1,084	22,225
合共服務 Total Services	112		3,422	97,520

恩錫鄰舍中心

Zion Neighborhood Center

服務類別 Services Item	活動次數 Number of Services	服務人次 Person Times
長者資源及支援服務 Elderly Service	13	81
功課輔導 Tutition	72	252
兒童 / 青少年興趣小組 / 活動 Children and Youth Program	7	129
居民網絡及支援服務 Community Network and Supporting Service	1	300
輔導及轉介 Counselling and Referral	9	18
家長講座 Parenting Talk	3	60
合共服務 Total Services	105	840

白普理上水家庭中心綜合家居照顧服務隊服務範圍

BRADBURY SHEUNG SHUI FAMILY CENTRE INTEGRATED HOME CARE SERVICES TEAM

服務地區

Services District

新界北區的 North District

公共房屋 Public Housing :

彩園邨、太平邨、彩蒲苑、順欣花園、旭埔苑、清河邨、祥龍圍邨

Choi Yuen Estate

Sunningdale Gareden

Cheung Lung Wai Estate

Ching Ho Estate

Tai Ping Estate

Choi Po Court

Yuk Po Court

鄉郊 Countryside :

石湖墟、吳屋村、蕉徑村、丙崗村、蓮塘尾、唐公嶺、大頭嶺、木湖、營盤村、金錢、羅湖、雞嶺、古洞、沙嶺、河上鄉、天平山村、塘肚山村、缸瓦甫、坑頭、虎地坳道、華山村、恐龍坑、新屋嶺、週田村、燕崗、蓮麻坑、鳳凰湖、東風坳、松柏壆、馬草壆、牛池、上水圍、天光甫、客家圍、鹿尾村、杉山、鳳崗、石仔嶺、長甫頭、長漚、麒麟村、塘角、掃管甫、陳屋甫、竹園、缸窰、老鼠嶺、下香園、銅鑼坑、較寮村、塘坊、香園圍、鷓鴣坑、信義新村、橫漚、松園下、簡頭圍、沙嶺、南坑、圓嶺仔

ChanUk Po

Ha Heung Yuen

Kan Tau Wai

Lo Shue Ling

Cheung Lek

Hakka Wai

Kau Liu Village

Luk Mei Tsuen

Cheung Po Tau

Hang Tau

Ki Lun Tsuen

Luohu

Chow Tin Tsuen

Heung Yuen Wai

Kong Nga Po

Ma Tso Lung

Chuk Yuen

Ho Sheung Heung

Kong Yiu

Muk Wu

Fu Tei Ao To

Hung Lung Hang

Kwu Tung

Nam Hang

Fung Kong

Kai Leng

Lin Ma Hang

Ng Uk Tsuen

Fung Wong Wu

Kam Tsin

LinTong Mei

Ngau Tei

Ping Kong

So Kwun Po

Tse Koo Hang

Yin Kong

San Uk Leng

Tai Tau Leng

Tsiu Keng Tsun

Ying Pun

Sha Ling

Tin Kwong Po

Tsung Pak Long

Yuen Ling Chai

Cham Shan

Tin Ping Shan Village

Tsung Yuen Ha

Shek Tsai Leng

Tong Fong

Tung Fung Au

Shek Wu Hui

Tong Kok

Tung Lo Hang

Sheung Shui Village

Tong Kung Leng

Wah Shan Tsuen

Shun Yee San Tsuen

Tong To Shan Tsuen

Wang Lek

Sandy Ridge

私人屋苑 Private Estate :

華慧園、威尼斯花園、維也納花園、欣翠花園、海裕苑、翠彤苑、奕翠園、上水中心、上水名都、蔚翠花園、龍豐花園、新都廣場、翠麗花園、順欣花園

Camellia Court

Sheung Shui Centre

Cheerful Park

Sheung Shui Town Centre

Eden Garden

Tsui Lai Garden

Glamour Garden

Venice Garden

Greenpark Villa

Vienna Garden

Lung Fung Garden

Woodland Crest

Metropole Plaza

Sunningdale Gareden

學校服務隊協作學校及團體 (排名不分先後)

LIST OF COOPERATIVE SCHOOL

九龍城浸信會禧年(恩平)小學
Kowloon City Baptist Church Hay Nien (Yan Ping) Primary School

香海正覺蓮社佛教陳式宏學校
HHCKLA Buddhist Chan Shi Wan Primary School

博愛醫院歷屆總理聯誼會鄭任安夫人學校
AD & FD POHL Mrs Cheng Yam On School

上水宣道小學
Alliance Primary School (Sheung Shui)

明愛容園中心
Caritas Hugs Centre

迦密愛禮信小學
Carmel Alison Lam Primary School

中華基督教會全完中學
CCC Chuen Yuen College

中華基督教會元朗真光小學
CCC Chun Kwong Primary School

中華基督教會何福堂小學
CCC Hoh Fuk Tong Primary School

神召會華人同工聯會景盛幼稚園
CCWF King Shing Kindergarten

台灣朝陽科技大學
Chaoyang University of Technology

慈航學校
Chi Hong Primary School

佛教志蓮小學
Chi Lin Buddhist Primary School

潮陽百欣小學
Chiu Yang Por Yen Primary School

香港中文大學 社會工作學系
Department of social work the Chinese university of Hong Kong

基督教粉嶺神召會小學
Fanling Assembly of God Church Primary School

炮台山循道衛理中學
Fortress Hill Methodist Secondary School

方樹福堂基金方樹泉小學
FSFTF Fong Shu Chuen Primary School

福德學社小學
Fuk Tak Education Society Primary School

鳳溪創新小學
Fung Kai Innovative School

鳳溪第一小學
Fung Kai No.1 Primary School

香海正覺蓮社佛教正覺蓮社學校
HHCKLA Buddhist Ching Kok Lin Association School

香海正覺蓮社佛教正慧小學
HHCKLA Buddhist Wisdom Primary School

港澳信義會黃陳淑英紀念學校
HKMLC Wong Chan Sook Ying Memorial School

香港道教聯合會純陽小學
HKTA Shun Yeung Primary School

薈色園主辦可譽中學暨可譽小學
Ho Yu College and Primary School (Sponsored By Sik Sik Yuen)

香港懲教署
Hong Kong Correctional Services Department

香港紅十字會雅麗珊郡主學校
Hong Kong Red Cross Princess Alexandra School

邊界區少年警訊
JPC Border

樂善堂楊仲明學校
Lok Sin Tong Yeung Chung Ming Primary School

馬鞍山靈糧小學
Ma On Shan Ling Liang Primary School

北區區議會
North District District Council

白田天主教小學
Pak Tin Catholic Primary School

五旬節靳茂生小學
Pentecostal Gin Mao Sheng Primary School

五旬節聖潔會荃灣堂
Pentecostal Holiness Church Tsuen Wan Assembly

五旬節于良發小學
Pentecostal Yu Leung Fat Primary School

保良局莊啟程小學
PLK Chong Kee Ting Primary School

保良局田家炳小學
PLK Tin Ka Ping Primary School

保良局莊啟程第二小學
PLK Vicwood KT Chong No.2 Primary School

校本課後學習及支援計劃區本計劃(北區)
School-based After-School Learning and Support Programmes Community-based Projects (North District)

校本課後學習及支援計劃區本計劃(沙田)
School-based After-School Learning and Support Programmes Community-based Projects (Sha Tin)

校本課後學習及支援計劃區本計劃(元朗)
School-based After-School Learning and Support Programmes Community-based Projects (Yuen Long)

深培中學
Semple Memorial Secondary School

沙頭角中心小學
Sha Tau Kok Central Primary School

沙田循道衛理中學
Sha Tin Methodist College

石籬天主教小學
Shek Lei Catholic Primary School

聖公會嘉福榮真小學
SKH Ka Fuk Wing Chun Primary School

聖公會蒙恩小學
SKH Mung Yan Primary School

聖公會德田李兆強小學
SKH Tak Tin Lee Shiu Keung Primary School

聖公會偉倫小學
SKH Wei Lun Primary School

聖公會榮真小學
SKH Wing Chun Primary School

聖公會仁立紀念小學
SKH Yan Laap Memorial Primary School

柏立基教育學院校友會何壽基學校
SRBCEPSA Ho Sau Ki School

柏立基教育學院校友會李一諤紀念學校
SRBCEPSA Lee Yat Ngok Memorial School

大埔官立小學
Tai Po Government Primary School

香港教育大學賽馬會小學
The Education University of Hong Kong Jockey Club Primary School

香港社會服務聯會
The Hong Kong Council of Social Service

香港家庭教育學院
The Hong Kong Institute of Family Education

電影、報刊及物品管理辦事處
The Office for Film, Newspaper and Article Administration

救世軍大埔青少年綜合服務
The Salvation Army Tai Po Integrated Service for Young People

救世軍田家炳學校
The Salvation Army Tin Ka Ping School

天水圍循道衛理小學
Tin Shui Wai Methodist Primary School

曾梅千禧學校
Tsang Mui Millennium School

東華三院港九電器商聯會小學
TWGHs Hong Kong and Kowloon Electrical Appliances Merchants Association Limited School

東華三院甲寅年總理中學
TWGHs Kap Yan Directors' College

元朗朗屏邨惠州學校
Y.L. Long Ping Estate Wai Chow School

仁濟醫院陳耀星小學
Yan Chai Hospital Chan Iu Seng Primary School

仁濟醫院永隆幼稚園 / 幼兒中心
Yan Chai Hospital Wing Lung Kindergarten

仁愛堂劉皇發夫人小學
Yan Oi Tong Madam Lau Wong Fat Primary School

元朗寶覺學校
Yuen Long Po Kok Primary School

世界龍岡學校黃耀南小學
LKWFSL Wong Yiu Nam Primary School

上水惠州公立學校
Wai Chow Public School (Sheung Shui)

山東棗莊市社會工作協會

深圳市南山區綠野社工服務中心

深圳綠野社工服務中心

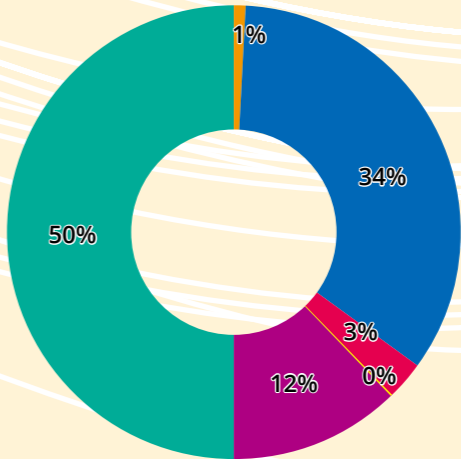
廣州市花都區啟明社會工作服務中心

鶴龍家庭綜合服務

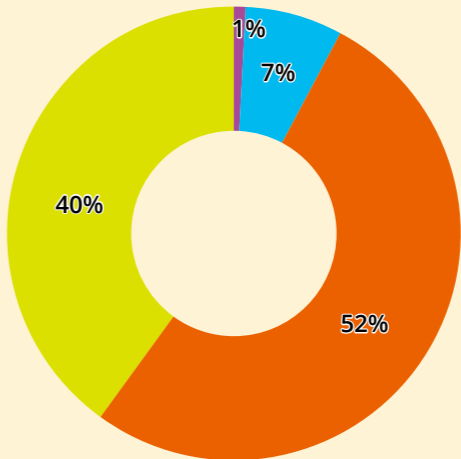
財務概覽

FINANCIAL REVIEW

收入分類 Analysis of Income	總額 Amount	佔總收入比例 Proportion (%)
社會福利署津助 SWD Subventions	\$ 14,009,857	34%
公益金津助 Community Chest Fund	\$ 1,157,291	3%
其他基金津助 Other Funding	\$ 150,610	0%
捐款及籌款 Donation and Fundraising	\$ 4,953,480	12%
服務收費 Programme Income	\$ 21,323,966	50%
其他收入 Others	\$ 209,119	1%
總收入 Total Income	\$ 41,804,323	100%



支出分類 Analysis of Expenditures	總額 Amount	佔總收入比例 Proportion (%)
基本運作開支 General Operations	\$ 3,087,820	7%
薪金及員工福利 Personal Emoluments	\$ 21,659,253	52%
服務及活動開支 Direct Programmes Expenses	\$ 16,496,173	40%
其他收入 Others	\$ 379,401	1%
總支出 Total Expenditures	\$ 41,622,647	100%



核數師報告

AUDITOR'S REPORT

HONG KONG EVANGELICAL CHURCH SOCIAL SERVICE LIMITED CONSOLIDATED STATEMENT OF COMPREHENSIVE INCOME FOR THE YEAR ENDED 31 MARCH, 2018

	Note	2018	2017
		HK\$	(Reclassified) HK\$
Income			
Activity income		4,442,545	5,835,584
Bank interest		14,809	13,030
Community chest fund programme income	10	1,157,291	527,227
Community care fund income	11	150,610	10,033
Course, day care and tuition fee		6,861,719	6,858,535
Donation income		987,429	952,929
Flag day fund raising income	12	654,798	---
Fund raising income		65,305	128,312.00
Other grants and subvention		3,231,052	2,177,983.00
Programme income		326,993	303,628
Special one-off grant		14,896	---
School project fee		8,067,430	7,555,373
Service income		1,509,659	1,439,793
Social welfare subvention	13	14,009,857	13,449,854
Subscription fee		115,620	119,665
Sundry income		194,310	313,573
		<u>41,804,323</u>	<u>39,685,519</u>
Expenditure			
Activity and programme expenses		4,617,046	5,572,946
Administration fee		31,557	83,925
Advertising and recruitment		58,965	58,235
Auditors' remuneration		94,100	88,603
Bank interest and charges		4,150	6,545
Books, newspaper and magazine		16,700	17,874
Cleaning expenses		178,447	208,574
Community chest fund programme expenses		320,652	155,768
Community care fund expenses	14	158,206	148
Consultancy fee		280,575	474,992
Course, day care and tutorial class expenses		4,496,128	4,994,407
Depreciation		640,421	587,474
Donation expenses		5,918	10,000
Flag day fund raising expenses	12	38,516	---
Food		956,986	1,068,878
Insurance		199,624	162,212
Mandatory and ORSO contribution		1,349,099	1,235,898
Membership fee		4,700	4,700
Messing expenses		43,579	101,277
Minor purchases, repair and maintenance		539,698	488,745
Motor vehicle expenses		83,521	181,091
Other service expenses		50,715	36,094
Postage		6,004	11,628
Printing and stationery		217,994	225,544
Professional fee		286,218	271,316
Rent and rates		1,495,917	1,420,961
Salaries	15	20,310,154	18,345,784
School project expenses		2,736,586	2,441,827
Special one-off grant expenses		14,896	---
Sub-contracting services		135,175	211,374
Staff welfare		58,013	63,223
Subsidies expenses		29,148	9,679
Sundry expenses		379,401	313,693
Telephone and fax		76,501	75,781
Training expenses		310,414	189,840
Travelling		371,666	349,431
Tutor expenses		568,391	109,725
Utility expenses		<u>456,866</u>	<u>460,447</u>
		<u>41,622,647</u>	<u>40,038,639</u>
Total comprehensive surplus / (deficit) for the year		<u>181,676</u>	<u>(353,120)</u>

HONG KONG EVANGELICAL CHURCH SOCIAL SERVICE LIMITED CONSOLIDATED STATEMENT OF FINANCIAL POSITION AS AT 31 MARCH, 2018

	Note	2018	2017
		HK\$	HK\$
ASSETS AND LIABILITIES			
Non-Current Assets			
Plant and equipment	4	936,847	1,115,211
Improvement works in progress	5	288,154	269,641
		<u>1,225,001</u>	<u>1,384,852</u>
Current assets			
Accounts and other receivables		2,034,768	1,371,209
Deposits and prepayments		774,166	1,072,502
Time deposit		1,522,919	1,510,242
Cash and cash equivalents	6	11,651,917	9,859,080
		<u>15,983,770</u>	<u>13,813,033</u>
Current liabilities			
Accounts payable and accruals		2,147,173	1,232,109
Receipt in advance	7	3,407,943	3,354,533
Amounts due to related parties	8	4,263,226	3,855,446
		<u>9,818,342</u>	<u>8,442,088</u>
Net current assets		<u>6,165,428</u>	<u>5,370,945</u>
Non-Current liabilities			
Long-Service payment		452,956	---
		<u>6,937,473</u>	<u>6,755,797</u>
RESERVES & FUNDS			
General fund		2,367,232	2,973,688
Renovation fund		162,000	162,000
Surplus reserve	9	3,878,809	3,108,579
Reserve for future development		94,409	94,409
Fixed assets fund		434,934	400,821
The Sir Robert Ho Tung Chaitable Fund		89	16,300
Total reserves & funds		<u>6,937,473</u>	<u>6,755,797</u>

**NGO : HONG KONG EVANGELICAL CHURCH
SOCIAL SERVICE LIMITED
1 APRIL 2017 TO 31 MARCH 2018**

	Note	Total 2018 \$	Total 2017 \$
A. INCOME			
1. Lump Sum Grant			
a. Lump Sum Grant (excluding Provident Fund)	1b	11,024,887.00	10,707,238.00
b. Provident Fund	1c	758,023.00	744,528.00
2. Special One-off Grant		15,000.00	-
3. Fee Income	2	1,253,571.90	1,217,297.70
4. Central Items	3a	870,994.00	636,437.00
5. Rent & Rates	4	335,423.00	329,823.00
6. Other Income	5	469,710.00	380,828.60
7. Interest Received		14,702.43	12,982.97
TOTAL INCOME		<u>14,742,311.33</u>	<u>14,029,135.27</u>
B. EXPENDITURE			
1. Personal Emoluments			
a. Salaries		7,969,748.32	7,172,940.63
b. Provident Fund	1c	599,641.19	558,048.23
c. Allowances Sub-total	6	8,569,389.51	7,730,988.86
2. Other Charges	7	4,516,761.69	4,501,224.13
3. Central Items	3b	870,994.00	636,437.00
4. Rent & Rates	4	324,250.00	329,720.00
5. Special One-off Grant Payments	7a	14,895.70	
TOTAL EXPENDITURE		<u>14,296,290.90</u>	<u>13,198,369.99</u>
C. SURPLUS/(DEFICIT) FOR THE YEAR	8	<u>446,020.43</u>	<u>830,765.28</u>

The Annual Financial Report from pages 2 to 8 has been prepared in accordance with the requirements as set out in the Lump Sum Grant Manual.

	Snapshot Staff \$	6.8% and Other Posts \$	Total \$
Provident Fund Contribution			
Subvention Received	137,308.00	620,715.00	758,023.00
Provident Fund Contribution Paid during the Year	<u>(137,848.80)</u>	<u>(461,792.39)</u>	<u>(599,641.19)</u>
Surplus/(Deficit) for the Year	(540.80)	158,922.61	158,381.81
Add : Surplus/(Deficit) b/f	(73,458.39)	1,632,009.40	1,558,551.01
Add: Adjustments to opening balance as previously agreed with SWD "SF/SAS/4-65/68(316) Jan2018"	177,999.35	196,448.47	374,447.82
Add: Additional subvention received for previous years(s)	5,885.00	-	5,885.00
Less: Refund to Government	<u>85,535.00</u>	<u>-</u>	<u>85,535.00</u>
Surplus c/f	<u>24,350.16</u>	<u>1,987,380.48</u>	<u>2,011,730.64</u>

董事及管理委員名錄 LIST OF DIRECTORS AND MANAGEMENT BOARD MEMBERS (2017/2018)

社會服務處 Social Service Limited Coordination Office

主席 Chairperson	： 陳汝生牧師 Rev Chan Yu Sang	陳金蓮牧師 Rev Chan Kam Lin
成員 Members	： 葉寶言先生 Mr Yip Po Yin (Treasurer)	梁穎賢女士 Ms Leung Wing Yin
	麥麗嫻牧師 Rev Mak Lai Sim	楊蘭琴姑娘 Ms Yeung Lan Kam
	文楚君牧師 Rev Man Chor Kwan	

大興長者鄰舍中心 Tai Hing Neighborhood Elderly Center

主席 Chairperson	： 文楚君牧師 (中心總監) Rev Man Chor Kwan (Centre Director)	
委員 Committee	： 陳彼信先生 Mr Chan Pei Shun	黃笑薇女士 Ms Wong Siu Mei
	梁志文先生 Mr Leung Chi Man	羅麗明女士 Ms Law Lai Ming

白普理上水家庭中心 Bradbury Sheung Shui Family Centre

白普理上水家庭中心綜合家居照顧服務隊

Bradbury Sheung Shui Family Centre Integrated Home Care Services Team

學校服務隊 School Services Team

恩霖社區服務中心 Yan Lam Community Service Centre

主席 Chairperson	： 陳汝生牧師 (中心總監) Rev Chan Yu Sang (Centre Director)	
成員 Members	： 陳漢裕先生 Mr Chan Hon Yu	冼家慧小姐 Ms Sin Ka Wai
	張杰先生 Mr Chang Kit	方恩傑先生 Mr Fong Yan Kit
列席 Nonvoting	： 曾玉英女士 Ms Tsang Yuk Ying	葉建忠先生 Mr Yip Kin Chung

粉嶺家庭中心 Fanling Family Centre

主席 Chairperson	： 陳金蓮牧師 (中心總監) Rev Chan Kim Lin (Centre Director)	
成員 Members	： 楊偉業牧師 Rev Yeung Wai Yip	曾淑儀女士 Ms Tsang Shuk Yee
	陳立德先生 Mr Chan Lap Tak	蔡妙虹女士 Ms Tsoi Miu Hung
	黃佩華女士 Ms Wong Pui Wai	阮小娟女士 Ms Yuen Siu Kuen
	曾淑玲女士 Ms Tsang Shuk Ling	王學清先生 Mr Wong Hok Ching
列席 Nonvoting	： 黃志勇先生 Mr Wong Chi Yung	

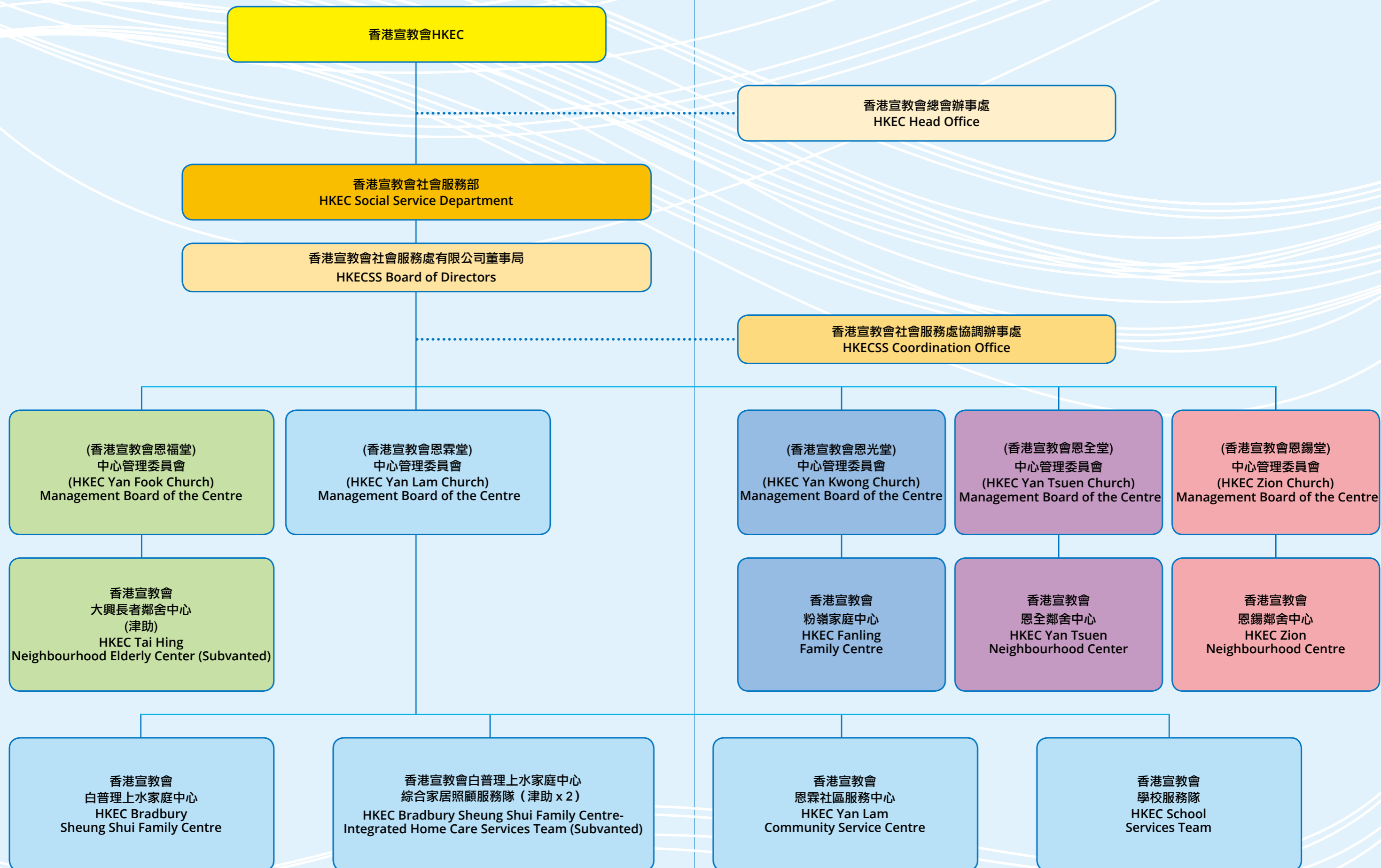
恩全鄰舍中心 Yan Tsuen Neighborhood Center

主席 Chairperson	： 麥麗嫻牧師 (中心總監) Rev Mak Lai Sim (Centre Director)	
委員 Committee	： 鄭建偉先生 Mr Cheng Kin Wai	梁穎賢女士 Ms Leung Wing Yin
	張旭民先生 Mr Cheung Yuk Man	

恩錫鄰舍中心 Zion Neighborhood Centre

主席 Chairperson	： 楊蘭琴姑娘 (中心總監) Ms Yeung Lan Kam (Centre Director)	
委員 Committee	： 林偉傑先生 Mr Lam Wai Kit	陳春歡小姐 Ms Chan Chun Foon
	王敏思小姐 Ms Wong Man Sze	

架構圖 ORGANIZATION CHART



我們各服務單位 OUR SERVICE UNITS

成立年份
Establish Year: 1982

香港宣教會大興長者鄰舍中心

是香港宣教會首間老人福利服務單位。中心秉承基督的愛，為屯門區長者提供多元化之服務，鼓勵長者享受豐盛之晚年，同時為個人、家庭之需要，提供靈性、生理、心理社群上的支援及發展服務。服務對象為年滿 60 歲或以上之長者。

主要服務

- 社交及康樂發展服務
- 健康支援服務
- 個人輔導及轉介服務
- 教育及發展性小組服務

地址：屯門大興邨興耀樓地下 15-21 號
電話：24657163 傳真：24562825
電郵：thelderly@hotmail.com
聯絡人：葉燕女士（中心主任）

HKEC Tai Hing Neighbourhood Elderly Center

The first social service unit of HKEC. Our services are targeted for elderly aged 60 or above. We follow Jesus Christ's love, provide comprehensive service to the elderly and enhance positive aging. Furthermore, we provide religious, psychological, physical supportive and developmental service for the needs of individuals and families.

Core Services

- Social Service and Recreation Activities
- Health Support Service
- Personal Counselling and Referral Service
- Educational and developmental Groups

Address : 15-21, G/F, Hing Yiu House, Tai Hing Estate, Tuen Mun, NT.
Tel : 24657163 Fax : 24562825
Email : thelderly@hotmail.com
Contact Person : Ms Yip Yin (Centre In- Charge)

成立年份
Establish Year: 1991

香港宣教會白普理上水家庭中心

為香港宣教會首間以自負盈虧方式運作的綜合家庭服務中心。以多元化的方式，為區內家庭及有需要人士提供支援及發展性質的服務；服務對象遍及兒童、青少年、家長、在職人士及長者。

主要服務

- 兒童及家長服務
- 家居支援服務
- 長者及鄉郊服務

地址：上水彩園邨彩麗樓地下 29-40 號
電話：26702995 傳真：26708985
電郵：sf@hkecss.org
聯絡人：曾玉英女士（助理督導主任）

HKEC Bradbury Sheung Shui Family Centre

HKEC Bradbury Sheung Shui Family Centre was the first self -financed integrated service family centre of HKEC. We provide variety of service to those families and needy in Community, beneficiaries including children, youth, parents, workers and elderly.

Core Services

- Children and parent service
- Home Care Service
- Elderly and rural service

Address : 29-40, G/F, Choi Lai House, Choi Yuen Estate, Sheung Shui, NT
Tel : 26702995 Fax : 26708985
Email : sf@hkecss.org
Contact Person : Ms Tsang Yuk Ying (Assistant Supervisor)

香港宣教會白普理上水家庭中心 綜合家居照顧服務隊

綜合家居照顧服務隊為香港宣教會白普理上水家庭中心轄下的服務單位，由香港政府提供資助。為配合家庭服務多元化的需要，中心於一九九四年向香港政府申請資助首隊家務助理隊，並於上水太平邨設立隊址，為北區居民提供到戶生活支援服務。於一九九八年八月，因應區內服務需求的增加，再獲香港政府資助第二隊家務助理隊。及後，因應長者護理服務的需求日增，於二零零四年四月，兩隊家務助理隊轉型為“綜合家居照顧服務”，並改名為“香港宣教會白普理上水家庭中心綜合家居照顧服務隊”。

主要服務

- 家居服務
- 護理服務
- 社交活動

地址：上水太平邨平靜樓地下 112-114 號
電話：26724160 傳真：26729640
電郵：it@hkecss.org
聯絡人：葉建忠先生（助理督導主任）

HKEC Bradbury Sheung Shui Family Centre Integrated Home Care Team

The integrated Home Care Services Team is a government-subsented service team of HKEC Bradbury Sheung Shui Family Centre. To response to the diversity of community demands, in 1994, the first Home Care Team.

Core Services

- Home Care Service
- Care Service
- Social Activity

Address : 112-114, G/F, Ping Ching House, Tai Ping Estate, Sheung Shui, NT.
Tel : 26724160 Fax : 26729640
Email : it@hkecss.org
Contact Person : Mr Yip Kin Chung (Assistant Supervisor)

成立年份
Establish Year: 1993

香港宣教會粉嶺家庭中心

為本會第三所社會服務中心。同樣以自負盈虧模式，為區內家庭提供綜合性服務。

主要服務

- 學童託管及家庭教育服務
- 社區教育活動
- 家庭活動及資源服務
- 義工發展及培育服務
- 宗教輔導及生活教育

地址：粉嶺華明邨添明樓地下 3 號
電話：26764010 傳真：26779252
電郵：hkecffc@gmail.com
聯絡人：黃志勇先生（中心主任）

HKEC Fanling Family Centre

HKEC Fanling Family Centre is our third self-financed Social Service Centre which provides integrated social service.

Core Services

- After School Care and Family Education Service
- Community Education
- Families Program and Resources
- Volunteer Development
- Religion and Life Education

Address : 3, G/F, Tim Ming House, Wah Ming Estate, Fanling, NT.
Tel : 26764010 Fax : 26779252
Email : hkecffc@gmail.com
Contact Person : Mr Wong Chi Yung (Centre In- Charge)

成立年份
Establish Year: 2007

香港宣教會學校服務隊

香港宣教會學校服務隊之前身為「香港宣教會白普理上水家庭中心——學校服務部」，由2000年開始已為北區及本港各區學校提供各項支援及發展性服務。因應服務的發展及機構的架構重組，由2007年9月1日起，成功申請為獨立註冊服務單位，希望能更專注地及更靈活地為本港中、小學及幼稚園提供多元化的支援及輔助服務。

主要服務

- 全方位小學輔導服務
- 成長的天空計劃
- 校本課後學習及支援計劃（區本計劃）
- 課餘活動小組及支援服務
- 特殊教育支援服務
- 家長教育服務
- 教師培訓及支援活動
- 境內及境外遊學服務
- 駐幼稚園社工服務
- 學生領袖及義工培訓
- 優質教育計劃及其他創新協作計劃

地址：上水清河邨清平樓地下B翼及C翼
電話：26724771 傳真：22422522
電郵：st@hkecss.org
聯絡人：葉建忠先生（助理督導主任）

HKEC School Services Team

HKEC School Services Team is one of the non profit making services unit of Hong Kong Evangelical Church Social Service Limited, formerly known as the “Hong Kong Evangelical Church Bradbury Sheung Shui Family-School Services Department”. In response to the demand, Hong Kong Evangelical Church Yan Lam Church promoted the establishment of an independent service unit, and assume supervisory responsibilities in 2007.

Core Services

- Comprehensive Student Guidance Service
- Understanding Adolescent Project
- School-based After School Learning and Support Programs: Community-based Projects
- After-School Program
- Special Educational Needs Service
- Parenting Education Program
- Teachers Training
- Inbound and Outbound Study Tour Service
- Kindergarten Stationing Guidance Service
- Student Leader and Volunteer Training
- Quality Education Projects and other Pioneers Projects

Address : Wing B & C, G/F, Ching Ping House, Ching Ho Estate, Sheung Shui, NT.
Tel : 26724771 Fax : 22422522
Email : st@hkecss.org
Contact Person : Mr Yip Kin Chung (Assistant Supervisor)



成立年份
Establish Year: 2009

香港宣教會恩霖社區服務中心

因關心上水清河邨——一個新落成及入伙的公共屋邨——的服務需求，遂把原先在彩園邨「白普理上水家庭中心」的兒童及家長服務團隊抽調出來成立此以自盈虧方式營運的中心。

中心計劃以「友善家庭」、「睦鄰社區」為服務方向，提供一站式的資源、支援和發展性服務予區內居民。

主要服務

- 居民網絡及支援服務
- 家庭資源及支援服務
- 家庭生活及親子教育服務
- 生命及靈智教育服務
- 長者資源及支援服務

地址：上水清河邨清平樓地下B翼及C翼
電話：26724771 傳真：22422522
電郵：yl@hkecss.org
聯絡人：葉建忠先生（助理督導主任）

HKEC Yan Lam Community Service Centre

HKEC Yan Lam Community Service Centre was set up at Ching Ho Estate in Sheung Shui in June of 2009 and is managed by HKEC Yan Lam Church. In response to the services demand of the newly-developed public housing estate, our Child and Parent Department of HKEC Bradbury Sheung Shui Family Centre is separated and operated on self-finance bases in the new centre. “Friendly Family” and “Harmonious Community” are the services direction of the centre which is to serve the local community via a one-stop resources, support and development services.

Core Services

- Community Network and Support Service
- Families Resources and Supporting Service
- Family and Parenting Service
- Religious Services and Life Education Activities
- Elderly Service

Address : Wing B & C, G/F, Ching Ping House, Ching Ho Estate, Sheung Shui, NT.
Tel : 26724771 Fax : 22422522
Email : yl@hkecss.org
Contact Person : Mr Yip Kin Chung (Assistant Supervisor)

成立年份
Establish Year: 2009

香港宣教會恩全鄰舍中心

由恩全堂承辦及管理，希望能結合教會及中心資源，促進大埔社區的鄰舍關係，建構和諧社區。

中心以「睦鄰社區」及「全人發展」為服務方向，為區內的居民、家長及中小學生提供一站式的支援性和發展性服務。中心的宗旨是『與你一起締造豐盛人生、健康家庭、和諧社區』

主要服務

- 短期食物支援服務
- 長者支援服務
- 家庭支援服務
- 功課輔導服務
- 愛心午膳服務
- 社區轉化服務

地址：大埔大元邨泰怡樓B座地下17-19室
電話：26669779 傳真：21255013
電郵：yantsuencenter@yahoo.com.hk
聯絡人：鄭建偉先生（社區主任）

HKEC Yan Tsuen Neighborhood Center

HKEC Yan Tsuen Neighborhood Center served the residents, parents and primary and secondary students in Hong Kong with one-stop, supportive and developmental services based on the principle of “neighborhood-friendly” and “holistic development”.

Core Services

- Food bank
- Elderly Support Service
- Family Support Service
- After School Care Program
- Lunch Service
- Community Conversion

Address : Rm 17-19, G/F, Tai Yee House, Tai Yuen Estate, Tai Po, NT.
Tel : 26669779 Fax : 21255013
Email : yantsuencenter@yahoo.com.hk
Contact Person : Mr Cheng Wai Kin (Community Officer)

成立年份
Establish Year: 2016

香港宣教會恩錫鄰舍中心

香港宣教會恩錫鄰舍中心由恩錫堂承辦及管理，希望能結合教會及中心資源，建構友善家庭及睦鄰社區為目標。中心自2012年至今為碩門邨定期舉辦有益身心的活動，亦因應屋邨人口特色和需要，提供靈活及具彈性的支援和發展服務，減少各類家庭及社區問題的發生。

主要服務

- 功課輔導服務
- 兒童及家長服務
- 個人輔導及轉介服務
- 宗教輔導及生活教育
- 長者服務

地址：沙田石門安群街1號京瑞廣場7樓J及K室

電話：55779114 傳真：23203320

電郵：zion@hkecss.org

聯絡人：楊蘭琴姑娘（中心總監）

HKEC Zion Neighborhood Centre

HKEC Zion Neighborhood Centre is set up and managed by Zion Church, aimed to integrate the resources of church community centre to develop harmony families and community. From 2012 to now, we have held variety kinds of activities and service at Shek Mun Estate to provide flexible supportive and developmental service in order to reduce family and community problem.

Core Services

- After-School Care Programs
- Children and parent service
- Personal Counseling and Referral Service
- Religion and Life Education
- Elderly service

Address : Unit J and K, 7/F, Kings Wing Plaza 2, No.1 On Kwan Street, Shek Mun, Shatin, NT.

Tel : 55779114 Fax : 23203320

Email : zion@hkecss.org

Contact Person : Ms Yeung Lan Kam (Centre Director)





香港宣教會社會服務處有限公司
Hong Kong Evangelical Church Social Service Limited

新界上水彩園邨彩麗樓地下29-40號

電話：2670 2995

傳真：2670 8985

網址：www.hkecss.org

電郵：info@hkecss.org

29-40, G/F, Choi Lai House, Choi Yuen Estate, Sheung Shui, NT

Tel : 2670 2995

Fax : 2670 8985

Website: www.hkecss.org

Email : info@hkecss.org