



年報
Annual Report
2018/2019

關愛傳遍 和諧共建
Harmony Community



香港宣教會社會服務處有限公司
Hong Kong Evangelical Church Social Service Limited



Charity listed on

Wise Giving 慈善機構

目錄
CONTENT



背景與宗旨	Background and Mission	2
主席的話	Chairman's Foreword	4
各服務單位回顧及展望	Service Review	6
服務點滴	Service Highlight	10
鳴謝	Acknowledgement	21
大興長者鄰舍中心 — 中心設施裝修工程	Tai Hing Neighbourhood Elderly Center Facility Enhancement Work	23
感謝支持 — 賣旗日	Thanks for Support — Flay Day	24
感謝支持 — 敬老護老愛心券	Thanks for Support — Charity ticket for respecting and caring the elderly	26
各服務單位服務數據摘要	Service Statistic Figures	28
財務概覽	Financial Review	33
核數師報告	Auditor's Report	34
董事及管理委員名錄	List of Directors and Management Board Members (2018/2019)	37
架構圖	Organization Chart	38
我們各服務單位	Our Service Units	40

流淚撒種的必歡呼收割
They that sow in tears
shall reap in joy.

詩篇
Psalms
126:5

背景與宗旨 Background and Mission

背景

香港宣教會為一基督教宗派，由一九五四年開始在香港石硤尾區內發展福音工作，至今在港建立了二十間堂會。

香港宣教會除積極傳揚福音和建立教會外，也透過社會服務具體地表達基督對人的愛和關懷；由五十年代至今，先後興辦了學校、自修室、老人中心、自負盈虧的綜合家庭服務中心及社區中心，以服務社區上有需要之人仕。

香港宣教會為增強對社會服務之關注和社會大眾的認受性，遂於一九九五年二月廿八日向公司註冊署及稅局申請成立非牟利慈善團體「香港宣教會社會服務處有限公司」，並獲法人地位，全面輔助各項社會服務的發展。

Background

Hong Kong Evangelical Church (HKEC for short) is a Christian Denomination. Being engaged in Missionary Outreach in Shek Kip Mei of Hong Kong since 1954, it has established up to now 20 local churches in Hong Kong.

In addition to Missionary Outreach and establishing local churches, HKEC expresses Christ's love and care of humankind through Social Services. Since 1950s, it has established schools, study centers, elderly centers and self-financed integrated family centers to serve the people in need in the communities.

In order to emphasize the community care and enhance the recognition of its social services, on 28 Feb 1995, HKECSS was incorporated under the Companies Ordinance and was granted tax exemption under Section 88 of the Inland Revenue Ordinance as a charitable organization. HKECSS is a corporate body that exists for the purpose of developing various Social Services.

宗旨

實踐耶穌基督傳揚福音和服務人群的精神，為個人、家庭及社區的需要，提供優質及結合福音的社會服務。

Mission

To follow Jesus Christ's example to preach the Gospel and to serve people by providing social services of high quality and combine the Gospel for the needs of individuals, families and communities.



Hong Kong Civil Aviation. We fly with you

香港民航 與你齊飛

主席的話

CHAIRMAN'S FOREWORD

藉著天父上帝的恩典，讓香港宣教會社會服務處透過我們不同的服務來服侍社區的居民及獨特社區的需要。回顧過去的一年，我們繼續以「扶老、携幼及睦鄰」的向度來服侍。政府對社會服務需要不斷提升下，我們各服務中心作出相關的回應及更新改變，特別大興及上水的津助服務單位，務求精益求精。在社會人士及提供資源的團體，包括有關政府部門及各社區慈善基金對機構管治的問責要求日漸增加，再加上社會福利署推行最佳執行指引，機構的決策、財務及工作報告交待的透明度不容置疑地也需相應提高。機構已將核數報告刊於年報及上載本社會服務處的網頁，以供公眾人士參閱。

我們盼望承存耶穌基督在世關愛的精神，關心每一位受助者的身心靈。我們的宗旨是「實踐耶穌基督傳揚福音和服務人群的精神，為個人、家庭及社區的需要，提供優質及結合福音的社會服務。」我們各個服務中心都藉著復活節及聖誕節的喜慶日子與坊眾和服務對象共同渡過愉快的日子，也透過這些特別的日子分享主耶穌的慈愛、犧牲與復和的精神。

With the grace of the lord, Hong Kong Evangelical Church Social Service Limited serves the needy and unique communities through our services provided by different service units. In the past year, we continue to serve the community with the direction of "helping the elderly", "bringing young children" and "Networking neighborhood". Under the government's continuous requirements of social service, our service centers have made relevant responses and updated changes in order to strive for excellence, especially in Tai Hing Neighborhood Elderly Center and subsidized home care service Team. With the increased accountability requirements for NGO governance from the community and stakeholders, including relevant government departments and community charitable funds and Social Welfare Department's Best Practice Manual, our decision-making, financial and work report is improved accordingly. The audit report has been published in the annual report and uploaded on our website for public viewing.

To follow Jesus Christ's example to preach the Gospel and to serve people by providing social services of high quality and combine the Gospel for the needs of individuals, families and communities. We have shared happy days with the public and service users during the festive days, such as Easter and Christmas, in order to share the spirit of love, sacrifice and reconciliation of Jesus Christ.

Thanks to the effort and professionalism of our staff, we continue to provide quality community support services, child care and family, youth

感謝各員工的投入及專業精神，機構繼續提供高質素的社區支援服務、幼兒及家庭、青少年健康發展及長者照顧服務工作。另一方面亦開拓資源，發展非政府資助服務計劃，回應社會主流服務未及照顧的長幼及家庭。服務也會聯繫教會，一同實踐基督愛人精神，關顧弱勢社群。感謝主的恩典，機構都得到不同基金資助先導計劃；除此之外，我們能連續每年舉辦新界區賣旗日籌款，使各非政府資助單位得以延續服務社群。

盼望以耶穌所講的成為我們指引：「我就是道路、真理和生命。若不藉著我，沒有人能到父那裡去。」心願我們所作的服務能夠成為別人的祝福。

董事局主席
陳汝生牧師

health development and elderly care services. On the other hand, we have also explored resources to develop non-government subsidized service in response to the young and the elderly who have not taken care of the mainstream services. We also cooperate with churches to practice the spirit of Christ's love and care for the disadvantaged. Thanks to the Lord's grace, we have received different fund-funded pilot projects; in addition, we are able to hold our Flag Day fundraising continuously these years, so that our non-government-funded units can serve the community continuously.

We hope that what Jesus said is our guide "I am the way and the truth and the life. No one comes to the Father except through me." We hope that the service we serve can be a blessing to others.

Chairman
Rev Chan Yu Sang

各服務單位回顧及展望 SERVICE REVIEW



香港宣教會大興長者鄰舍中心

現時中心會員主要來自屯門大興邨及附近居住之長者，透過中心服務使他們學習不同的事物。除此之外，2018年1月至5月，中心進行內部裝修，經裝修後之中心視覺上更明亮、充滿色彩，空間使用更理想，服務使用者均十分喜歡及滿意。

2018年10月開始，社會福利署增加了額外服務及人手，包括：認知障礙症及需支援護理長者服務，讓社會上有需要之長者得到更多社區支援服務。中心自從轉型後所提供的長者服務範疇更廣泛，包括：護老者支援服務、義工服務、隱閉長者服務、個案工作、長者牙科及長者上網服務申請，同時為有需要入住院舍的長者提供評估服務。



Hong Kong Evangelical Church

Tai Hing Neighbourhood Elderly Center

The members of Tai Hing Neighbourhood Elderly Center mainly come from Tai Hing Estate in Tuen Mun and the elderly living nearby. Elderly are able to learn different new things and develop ability from our various kinds of service. In addition, with the support by Improvement Programme of Elderly Centres (IPEC), Tai Hing Neighbourhood Elderly Center was able to carry out facility enhancement work from January to May 2018 so as to cater to the need for development of various services, as well as to provide a fresh and comfortable environment and space for users.

From October 2018, the Social Welfare Department has added additional services and manpower, including: the Carer & Dementia Community Support Service. The scope of the elderly services provided by the Center has been extended: care support services, volunteer services, hidden elderly services, case work, elderly dental and elderly Internet services, and assessment of elderly persons in need of residential care.

香港宣教會白普理上水家庭中心

中心近年致力發展及推動幼兒發展及家長親職教育工作，透過親子遊戲、品格教育、親子伴讀及多元化幼兒活動，啟發孩子的潛能、培養自信心和好品格。同時，我們為父母及其他照顧幼兒的人士，提供一套正確、簡單而實用的育幼知識，與他們在孩子的成长路上同行，使他們能更有效地履行父母的天職或照顧者的責任，從而讓幼兒在適當的培育下健康愉快地成長。



Hong Kong Evangelical Church

Bradbury Sheung Shui Family Centre

In recent years, Bradbury Sheung Shui Family Centre devoted to develop and promote early childhood development and parental education. We inspire children's potential and fosters self-confidence and good character through parent-child games, character education, parent-child companionship and diversified children activities. At the same time, we provide parents, children and other caregivers with a correct, simple and practical knowledge of child-rearing that goes hand-in-hand with their children's growth.



香港宣教會白普理上水家庭中心 綜合家居照顧服務隊

綜合家居照顧服務透過經驗豐富及受過專業訓練的工作人員和區內各服務單位的合作網絡，為體弱長者、殘疾人士及有特殊需要的家庭提供不同種類的照顧及服務。綜合家居照顧服務會按個別服務使用者的需要提供照顧及支援，以實踐「老有所屬」和「持續照顧」的理念，和促使服務使用者繼續在社區中生活。

Hong Kong Evangelical Church Bradbury Sheung Shui Family Centre Integrated Home Care Services Team

Integrated Home Care Services (IHCS) provides a range of community support services to the elderly persons, people with disabilities and needy families living in the community with a pool of experienced and professionally trained staff, and via a network of service units in the community with its collaboration and support. The Integrated Home Care Services Teams (IHCS Ts) provides care and support to the target service users according to their individual needs and actualize the concepts of 'Ageing in Place' and 'Continuum of Care' to enable the service users to continue living in the community.

香港宣教會粉嶺家庭中心

粉嶺家庭中心本著耶穌基督愛世人的精神及回應區內居民的需要，提供家庭服務，以促進家庭和諧及功能並個人之福祉，令居民藉此得享豐盛生命。今年其中兩項重點發展項目乃「愛。湯。訪」廚房家庭關懷行動及「GIFT」家長學堂，透過為區內不同背景的家庭提供適切的支援服務，以促進親子關係；促進婚姻關係；促進個人成長及社區參與，並協助建立區內家庭在社區中的支援網絡。



Hong Kong Evangelical Church Fanling Family Centre

The Fanling Family Centre provides family services in the spirit of Jesus Christ's love of the world and in response to the needs of residents to promote family harmony and function and personal well-being, so that residents can enjoy a rich life. Two of the key development projects this year are "Love Soup, "the Family Care Campaign and the "GIFT" Parents' School to promote parent-child relationships by providing appropriate support services to families of different backgrounds in the community. Promote personal growth and community involvement, and building community support network for families.



香港宣教會學校服務隊

除了為全港多間幼稚園及中小學提供不同形式的到校服務及遊學服務外，（如：全方位學生輔導服務、成長的天空和家長及教師培訓等）。近年，學校服務隊更發展學童特殊教育需要服務，透過基金的贊助，提供優質和個別化的特殊教育需要服務，讓孩子體驗愉快學習，肯定個人價值；讓區內有需要的家庭看見孩子的進步，感受社會關懷。同時，今年更獲數個不同的基金／機構支持，推行多項創新服務，為區內青少年及全港多間中小學提供多元化又培育他們均衡發展的服務及活動。

Hong Kong Evangelical Church

School Services Team

In addition to provide various types of school services and study tours services to various kindergartens, primary and secondary schools in Hong Kong (such as Comprehensive Student Guidance Service, Understanding Adolescent Project and Parents & Teachers training etc.) In recent years, the school services team have also been developing schoolchildren Special education needs service. Through the sponsorship of the fund, it provides quality and individualized special education needs services so that children can experience pleasure learning and affirmation of personal values. Families in need in the community can see the progress of their children and feel social care.



香港宣教會恩霖社區服務中心

香港宣教會恩霖社區服務中心位處於2個區內最近落成的公共屋邨—清河邨及祥龍圍邨。我們於新社區的建立開始便以發展本區的社會資本，有力地承托社區為目標，透過基金贊助的社區發展計劃鼓勵居民參與及提升社會意識，運用社區內外的資源，促進自助和互助的行為，解決社區問題，改善居住環境，改善生活質素。

Hong Kong Evangelical Church

Yan Lam Community Service Centre

Yan Lam Community Service Centre is located in two newly developed public housing estates—Ching Ho Estate and Cheung Lung Wai Estate. With the objective of developing the community's social capital and supporting the community forcefully, we encouraged residents to participate and enhance their social awareness through the community-funded projects sponsored by the Community Investment and Inclusion Fund (CIIF) and The Hong Kong Community Chest. They were also using resources inside and outside the community to promote self-help and help each other's behavior, solve community problems, improve the living environment and improve the quality of live.



香港宣教會恩全鄰舍中心

我們以「睦鄰社區」及「全人發展」為服務方向，為區內的居民、家長及中小學生提供一站式的支援性和發展性服務。中心的宗旨是『與你一起締造豐盛人生、健康家庭、和諧社區』。



Hong Kong Evangelical Church

Yan Tsuen Neighbourhood Center

The unit developed series of program and activities for poor and low income families who are living below the poverty line in Community. We run Food Bank, Social Outreach Service and Luncheon for needy to build a neighborhood support network and living environment of harmony and resilience successfully.



香港宣教會恩錫鄰舍中心

恩錫鄰舍中心 2016 年成立，由恩錫堂承辦及管理，希望能結合教會及中心資源，以建構友善家庭及睦鄰社區為目標。中心自 2012 年至今為碩門邨定期舉辦有益身心的活動，亦因應屋邨人口特色和需要，提供靈活及具彈性的支援和發展服務，達至減少各類家庭及社區問題的發生。

今年度，主要服務及活動有：

- 提升英語能力課程
- 家長講座
- 動物兵團逐隻 LOOK 暑期聖經班
- 參觀活動
- 聖誕繽紛耀碩門嘉年華



Hong Kong Evangelical Church

Zion Neighbourhood Centre

Zion Neighborhood Centre aims to provide flexible support and development services to reduce the incidence of various types of families and communities in Shek Mun Estate. This Year, we held:

- English improvement course,
- Parents' Talk
- Summer Bible Class
- Visits
- Christmas Carnival



強壯乃少年人的榮耀；
白髮為老年人的尊榮。

The Glory of young men is their strength,
and the honor of old men is their grey hair.

箴言
Proverbs
20:29

明明白白我的心 - 認知障礙症服務



承蒙「香港房屋委員會大興邨屋邨管理諮詢委員會」撥款，大興長者鄰舍中心舉辦「明明白白我的心」活動計劃。本計劃的服務對象主要為有早期認知障礙症徵狀的長者及社區人士（包括長者及照顧者），提升社區對認知障礙症患者的關注、接納及支援。活動包括義工訓練工作坊、社區健康講座、參觀香港認知障礙症協會李淇華中心及中心為本社交認知小組 -- 「腦有寄小組」。除了透過一連串的活動令參加者加深對認知障礙症的認識外，更重要是讓他們有機會體驗及學習照顧患者之技巧訓練。特別是橫跨3個月時間的「腦有寄小組」，小組義工持續協助患者參與社交認知活動，患者與義工建立互信關係、有講有笑，同時患者認知水平及正面情緒亦因持續的社交活動而得以維持穩定。



Alzheimer's Disease Service

Thanks to the sponsor of the "Hong Kong Housing Authority's Tai Hing Village Estate Management Advisory Committee", Tai Hing Neighborhood Elderly Center has organized a Alzheimer's Disease project for elderly with early symptoms of Alzheimer's Disease and their care giver, to enhance community awareness, acceptance and support for people with Alzheimer's Disease with volunteer training workshops, community health talks, visits and groups. We deepen the understanding of Alzheimer's Disease, and also providing them opportunity to experience and learn the skills of nursing Alzheimer's Disease patients. In

particular, with the three months group, the volunteers continue to assist patients participate in social cognitive activities and established a mutual trust relationship while the patient's cognitive level and positive emotions are also maintained due to continuous social activities.

開放日皮影戲訓練班

大興長者鄰舍中心透過開放日皮影戲訓練讓護老者能培養自己的興趣，懂得尋找工作方法去減輕平日的照顧壓力，而且讓他們在小組內建立互助網絡。另外，參加者很踴躍投入於每次的訓練當中，大家會互相勉勵，互相支持，並完成了的表演。

Shadow puppet theatre Training

Tai Hing Neighborhood Elderly Center let the elderly carers to develop their interest through the Shadow puppet theatre Training. They learnt how to find ways to replace their pressure and let them establish a mutual help network within the group.



助人自助義兵團

大興長者鄰舍中心成立助人自助義兵團長者義工隊，一直致力於服務大興邨，幫助有需要的長者，透過行動實踐愛的真諦。在過去一年，曾作到戶探訪、院舍及幼稚園探訪等。本團秉承團訓「義兵團服務多，齊奉獻暖心窩。」望能將我們僅有的力量，分享到社區，讓更多人感受到愛的溫暖。同時，義工透過參與服務和活動，肯定自我價值，加強個人對社會的參與感及投入感，讓自己更關心身邊不同的群體及建立一個互相關懷的社會。中心希望讓義工有發展才能的機會，發揮個人專才及能力，用行動、以愛去宣揚「施比受更為有福」。



Volunteer Team

Tai Hing Neighbourhood Elderly Center has set up a Volunteer Team who served those needy elderly in Tai Hing Estate. This year, we have visited homes, elderly hostel and kindergartens. We hope that we can share our limited strength to the community and let more people feel the unlimited warmth of love. At the same time, we hope that volunteers will have the opportunity to develop their talents, to use their personal abilities, and to use their actions and love to promote "It is more bless to give than to receive."

綜合家居照顧服務

綜合家居照顧服務透過經驗豐富及受過專業訓練的工作人員和區內各服務單位的合作網絡，為體弱長者、殘疾人士及有特殊需要的家庭提供不同種類的照顧及服務。綜合家居照顧服務會按個別服務使用者的需要提供照顧及支援，以實踐「老有所屬」和「持續照顧」的理念，和促使服務使用者繼續在社區中生活。

Integrated Home Care Services (IHCS)

Integrated Home Care Services (IHCS) provides a range of community support services to the elderly persons, people with disabilities and needy families living in the community with a pool of experienced and professionally trained staff, and via a network of service units in the community with its collaboration and support. The Integrated Home Care Services Teams (IHCS Ts) provides care and support to the target service users according to their individual needs and actualize the concepts of 'Ageing in Place' and 'Continuum of Care' to enable the service users to continue living in the community.

鄉郊社區網絡

香港宣教會白普理上水家庭中心長期採取主動外展方法，為北區偏遠村落居民服務。我們定期定點於鄉郊舉辦各類活動，包括小組活動、探訪、講座、聯誼活動等。在人口較為密集的村落（如：古洞、坑頭、金錢、燕崗、河上鄉、蕉徑等），派工作隊每星期2天到該村為居民提供身體檢查服務，並安排義工定期探訪在鄉郊居住的長者。在寒流及暴雨警告發出後，致電鄉郊區的長者，慰問他們的情況，指導他們採取安全措施及利用相關的社區資源。

Remote Villages Network

HKEC Bradbury Sheung Shui Family Centre has been taking an active outreach approach for long to serve residents living in remote villages in North District. We regularly hold different kinds of activities at certain locations in rural areas, including small group activities, visits, talks, and gathering activities, etc. In villages which are more populated (such as Kwu Tung, Hang Tau, Kam Tsin, Yin Kong, Ho Sheung Heung, Tsiu Keng, etc.), we sent crews twice a week to the villages to provide body check services to the residents. We arranged volunteers to regularly visit the elderly who live in rural areas. And when there is cold current or rainstorms, the volunteers will call the elderly living in these rural areas to show care to them and teach them to take precautionary measures and use relevant resources in the community.

老有所為計劃 - 耆樂鄰里共融



恩霖社區服務中心一直致力推動「敬老護老精神，促進跨代共融」和「居民互助網絡的建立，倡導和諧及健康的社區關係」為目標。本計劃提供多元化服務，包括透過美食小組、生日會、戶外活動、加油站等活動，讓長者更認識自身的社區和社區資源，同時鼓勵婦女、幼兒和長者參與共融活動，大家從中交流，擴闊社交圈子。區內的長者互相幫助，服務他人，在小組活動中各展所長，讓長者提升生活質素，在生活中發掘興趣和尋找生命意義，做到老有所為，共建快樂關懷的社區。

Opportunities for the Elderly Project

Yam Lam Community Service Centre strives to promote a culture of caring and respect for the elderly, fostering inter-generational harmony and establish a network of residents' mutual help to harmonious and healthy community relations. This program provides a wide range of services, including food sharing groups, birthday parties, outdoor activities and other activities, so that the elderly can better understand their own community and community resources, while encouraging women, children and the elderly to participate in inclusive activities to broaden their social network. The elders help each and serve others to show their ability and potential so that they can improve their quality of living to build a happy and caring community.



關愛基金 - 支援身體機能有輕度缺損長者試驗計劃

隨著北區的長者數目上升，服務的需要亦隨之上升。為達至居家安老，本會轄下的綜合家居照顧服務隊承辦了關愛基金推出「支援身體機能有輕度缺損的長者試驗計劃」第二年，直至2019年3月31日，本中心已為34位合資格長者提供服務。計劃讓更多輪候服務的人士得到適切的服務，包括膳食及家居清潔等服務，透過服務能減輕長者的生活壓力，舒緩情緒和樂在社區。



Pilot Scheme on Home Care and Support for Elderly Persons with Mild Impairment

A three-year "Pilot Scheme on Home Care and Support for Elderly Persons with Mild Impairment" ("Pilot Scheme") launches in December 2017 by the Community Care Fund (CCF) to provide home care and support services to low-income elderly persons with mild impairment. Services including meal and/or home services, which include personal care, simple nursing care, physical exercise, home-making (e.g. home cleaning), escort, purchase and delivery of daily necessities, etc.

長者康樂及發展性小組暨多元活動



本會轄下幾個服務單位均致力推動長者健康、康樂及發展性活動，鼓勵長者多接觸區內鄰舍，讓長者在晚年不再感孤單寂寞，提倡長者關注精神健康，減低他們出現太多負面情緒的機會。

本中心會定期舉辦不同的活動，包括長期小組、健康講座、長者義剪、旅行、生日會及健

康檢查等等，透過多元化的活動豐富長者的生活色彩、鼓勵長者與鄰舍建立關係，擴闊社交圈子，讓長者樂活在社區，推動社區和諧。

Elderly Recreation and Development Group

All of our services units are committed to promote healthy, recreational and developmental activities for the elderly, encourage the elderly to reach out to the public, and to develop their talents. The elderly are encouraged to get involved to the community and their physical, mental and spiritual health. For example, Yan Lam Community Services Centre has a wide range of activities including the monthly group: "Elderly Karaoke", "Elderly Chinese Literacy Class", "Elderly Bible Group" and "Gospel Group"

In addition, each centre also has monthly health talks, elderly haircut, travel, birthday parties, weekly meetings, health check-ups and "food packages" to help the elderly understand their health and deliver more knowledge to them to improve their lives. At the same time, the elders try different activities, including life education, home improvement, suburban outings, community cultural experience activities, etc., to enrich their life, broaden the social network, let them to live in the community and promote community harmony.



愛心飯堂 - 午間及晚間飯堂暨打氣食物包



恩霖社區服務中心透過與惜食堂合作的機會，於2017年開始於清河邨及祥龍圍村街坊提供午餐及晚餐服務，為合資格的長者和基層家庭提供廉價的熱食飯餐，同時擴闊其社交圈子，建立支援及睦鄰網絡。

有見及此，本中心亦透過惜食堂領取食物及飲品，逢星期三晚

於本中心免費派發“打氣食物包”予邨內長者及基層家庭，幫助他們舒緩經濟困難，在生活物資上支援區內居民。

Love lunchtime and evening canteen

Yan Lam Community Services Centre cooperated with Food Angel, provides meal boxes, food packs for eligible elders and grassroots families through subsidies from Food Angel to help ease the burden of living and help them to ease their financial difficulties. In addition, to broaden their social life, build support and good neighbor networks.

攜幼

Nurturing Kids

教養孩童，使他走當行的道，
就是到老他也不偏離。

Start children off on the way they should go,
and even when they are old they will not turn from it.

箴言
Proverbs
22:6

童尋品格蛋



承蒙香港迪士尼樂園及其義工隊贊助及大力支持，童尋品格蛋是白普理上水家庭中心已連續 7 年舉辦的年度大型活動。我們每年復活節於迪欣湖活動中心舉行親子尋蛋活動，在湖邊不同角落藏起了接近一千二百隻「品格蛋」，讓家長與孩子一起化身成為可愛的小白兔，與孩子到大自然，鼓勵家長身體力行，一起共渡充滿歡笑和汗水的開心時光之餘，同時播下品格建立的種子。

Character Egg hunting Activity

Thanks to the sponsorship and strong support of Hong Kong Disneyland and its volunteer team, the Character Egg Seeking Activity is the annual large-scale event held by the Bradbury Sheung Shui Family Centre for seven consecutive years. Every Easter, we hold a family- egg-hunting activity at the Inspiration Lake Recreation Centre. We hid nearly 1,200 character eggs different corners of the lake, so that parents and children who dressed up like a cute little bunny can share their family day filled with laughter and sweat, while planting the seeds of character.



「GIFT」家長學堂



「GIFT」家長學堂由香港宣教會粉嶺家庭中心、香港宣教會恩光堂、香港宣教會優質幼兒學校合作，以講座、工作坊、籌劃服務等形式，在「親子」、「家庭」、「個人」及「社區」等四方面學習。項目包括：親子伴讀技巧工作坊、親職讀書會、親子義工服務、戶外家庭活動、靜觀體驗、情緒管理等，期望家長能在學堂中學習常存感恩的心，明白孩子、以及自己所擁有、所經歷的，都是上天給他們的禮物。並從中找到自我價值，發現自己的能力，學習欣賞自己和發揮自己。

GIFT Parent School

"GIFT" Parent School is cooperating with Hong Kong Evangelical Church Fanling Family Centre, Hong Kong Evangelical Church Yan Kwong Church, Hong Kong Evangelical Church Elite Kindergarten, and provides lectures, workshops, planning services, etc., to learn in four aspects "parent-child", "family", "Individual" and "community". The projects include: parent-child reading skills workshops, parent-child reading clubs, parent-child volunteer services, outdoor family activities, meditation experiences, emotional management, etc. It is hoped that parents can learn to stay grateful in the school, understand their children, and own what they have experienced are gifts from heaven. And find self-worth from it, discover your abilities, learn to appreciate yourself and give play to yourself.

品格小果子



在基督裡，聖靈所結的果子就是仁愛、喜樂、和平、忍耐、恩慈、良善、信實、節制。近年，白普理上水家庭中心均會在暑期、聖誕節及復活節三個長假期為幼兒們精心策劃一個培養九個聖靈果子的好品格訓練。透過各式各樣的活動，內容包括：自理訓練、社交技巧學習、福音分享、繪本閱讀、唱遊、戶外活動學習、棋盤遊戲、烹飪、小手工製作等，讓孩子們學習與人相處，建立自信心和培養良好品格，過一個又一個既充實又有意義的假期。

Character Training Program

In Christ, the fruits of the Spirit are love, joy, peace, patience, kindness, goodness, faithfulness, self-control. Recent years, Bradbury Sheung Shui Family Centre has held a systematic and well-designed Character Training Program for toddlers during three long vacations in the summer holiday, Christmas and Easter. Through a variety of activities, including: self-care training, social skills learning, religious sharing, picture books read aloud, Sing and dance, outdoor activities

learning, board games, cooking, craft that children learn to get along with others, to establish self-confidence and develop good character, in order to have a fulfilling and meaningful holiday.



樂樂少年團

此計劃已連續十年由香港哥爾夫球會贊助，透過多元化的樂器團隊紀律訓練及高展示式的表演，提升區內青少年的正向價值觀及人際關係。他們透過不同樂器及步操訓練、訓練營及歷奇日，提升及發掘潛能，鞏固團員興趣發展的建立，以及責任感、紀律和團隊合作等正向品格。我們更藉著高展示的表演，近距離的演奏及分享團員的學習成果予其家長及社區人士，以此提升社區人士對青少年興趣發展需要的關注。

Scottish Instrument Band

This project has received sponsorship by the Hong Kong Golf Club for ten consecutive years. Through various orchestral disciplinary training and high-profile show, it promoted positive values among and deepened interpersonal relationships of the young people in the district. Through different musical instrument and marching training, training camps and adventures, they enhanced and explored their potentials, strengthened interest development as well as cultivated positive characters like sense of responsibility, discipline and teamwork, etc. Through high-profile show, near-distance performance and sharing of learning outcomes with participant's parents as well as people in the community, we aroused the concern of the people in the community about the interest development of young people.



童心同行親子品格教育服務



「品格教育及家長工作」是白普理上水家庭中心近年其中一項重點發展項目，我們提倡及早在幼兒階段，影響家長對兒童的培育態度和方法，推廣正向親職觀念至不同背景家庭（超過 600 個北區家庭），我們以提供優質社區資源及服務並推行親子遊戲的方式，幫助參與兒童建立良好品格及人際關係。同時，協助區內全職及在職家長建立培育兒童的正面價值及相關技巧，為家長加添親職正能量，建構開心愉快的親子互動和睦鄰友愛的社區生活環境。



Parent and Child Development Plan

Virtue Education and Parent Education is one of Bradbury Sheung Shui Family Centre's core development project in these few years, we highlight to influence the way and attitude of kids development in earlier stage and deliver positive values to families from different background (over 600 families). We provided community resources and promote parent and child activities to increase their awareness and skill of virtue development.

成長的天空計劃



香港宣教會學校服務隊自二零零七年開始，與全港小學協辦推行為期三年（小四至小六）成長的天空計劃，推行一套識別工具及一系列預防性及發展性輔導活動。「服務隊」為小學提供「發展課程」及「輔助課程」，協助學生掌握面對逆境的知識、技能和態度，激勵他們積極面對成長中可能遇到的挑戰；同時校方會識別出有較大成長需要的小學四年級學生，並提供介入式的課程，強化學生面對逆境的能力。

活動內容具多元化包括：優質教師工作坊、優質家長工作坊、輔助小組、挑戰日營、

再戰營會、愛心之旅（社會服務），親子黃昏營、家長教師分享會及結業禮。

Life and Growth Program

Our social workers went to schools to give training on resilience to primary four to six students and provided parents education services. Through small groups, camps talks, and personal counseling and alike aiming at a total of several hundreds of students and parents from over ten primary schools, the students knew themselves better and their abilities to face adversities were strengthened, so that the participant's life were stronger and their family relationship were deeper.



「李國賢兒童基金 - 樂啟航®」計劃

我們深信培育孩子必須先由家庭著手，以學習理論為藍本的幼兒課程，配合正確的親職態度，能夠為嬰幼兒的成長奠定重要的基礎。有見及此，本年度香港宣教會恩霖社區服務中心參與了第四階段的樂啟航計劃，承蒙「李國賢基金會」的資助，我們於本年度服務了區內十二對嬰幼兒親子，並在服務過程中獲得一致的好評。為了讓區內更多嬰幼兒親子能夠受惠，我們亦獲基金會邀請繼續參與第五階段的樂啟航計劃，希望能夠把正確的親職態度在區內傳揚。

Simon K Y Lee Children's Fund – FLY Project (“FLY IV”)

FLY Project is an evidence-based early intervention programme for enhancing the learning and development of preschoolers aged 1.5 from deprived families before kindergarten entry. It covers different aspects of child-development such as cognitive, preschool concept, language, social, gross and fine motor, behavior and parent-child relationship. Yan Lam Community Service

Centre has also been invited by the Foundation to continue to participate in the fourth phase of the Simon K Y Lee Children's Fund, hoping to promote the correct parental attitude in the region.



「童・喜・步」特殊教育需要社區支援服務



不經不覺「童・喜・步」已服務區內有需要的家庭六年了，踏入第七個年頭，我們仍無忘當初設立服務時的初心，希望能夠透過一系列多元化及個別化的小組、單元活動，以及諮詢服務，陪伴服務對象及其家庭走過每一個成長的階段（如：幼兒社交溝通能力提昇小組、「講」清「講」楚幼兒語言理解及表達能力提昇小組、幼兒專注力小組、寫前及書寫能力訓練小組、學前語文學習小組及「童・喜・步」成長計劃等）。本年度我們繼續地與不同的團體合作，希望讓社會上不同人士能夠透過與孩子的互動，看見孩子的潛能，讓孩子感受到適切的關懷。

“Joyful Kids, Hopeful Steps” Community Support Service in Special Educational Needs

This is the sixth year of “Joyful Kids, Hopeful Steps” Community Support Service in Special Educational Needs in Yan Lam Community Service Centre. We promote “early identification” and “early intervention”, and aim to provide quality and all-pervading SEN support service to the community. We help children to learning joyfully and enhance their self-value. We also help parents to support their children hopefully, and experience care from society. This year, we also designed “Joyful Kids, Hopeful Steps” summer program to enrich their social and life experience, and also increase their learning effectiveness. This year, we actively co-organised volunteer activities with different tertiary institutions (The Department of Speech and Hearing Science of the University of Hong Kong, the Social Services Group of the Chinese University of Hong Kong and the Hong Kong Institute of Vocational Education). We hope that different people in the community can see through their interaction with their children potential and allows the child to feel the appropriate care.



青少年兒童發展及義工小組

若青年人這些閒餘時間更能有效運用，則有效減低他們流連公園結成童黨、吸煙、吸毒、加入黑社會的機會之餘，亦能發展他們的興趣及所長，並加之用於社區之中，對他們個人及整個社區實有正面的作用。恩霖社區服務中心以小組形式舉行了一些青年及兒童發展及義工小組，就著組員的特質及興趣，進行不同的遊戲及活動，以承托他們的個人及興趣發展，並不時進行義工服務，加強他們對社區的歸屬感。

Youth and Child Development and Volunteer Team

If young people can use these spare time more effectively, they will effectively reduce their chances of forming a child's party, smoking, drug use and joining a triad. They can also develop their interests and strengths and use it for the community. It has a positive effect on their individual and the entire community. The Yan Lam Community Service Centre has organized a number of Youth and Child Development and Volunteer Teams in small groups to conduct different games and activities on the basis of the traits and interests of the members, to support their personal and interest development, and to volunteer from time to time, to strengthen their sense of belonging to the community.

睦鄰

Harmonious

「你要盡心、盡性、盡力、盡意愛主你的上帝；
又要愛鄰舍如同自己。」

He answered, “Love the Lord your God with all your heart and with all your soul and with all your strength and with all your mind and, Love your neighbor as yourself.”

路加福音
Luke
10:27

「愛。湯。訪」劏房家庭關懷行動

承蒙世界傳道會／那打素基金撥款贊助，粉嶺家庭中心今年舉行為期一年「愛。湯。訪」劏房家庭關懷行動。計劃對象為居於粉嶺聯和墟內，育有在學兒童的劏房家庭。因應這些家庭的特徵，如：(1) 居住環境狹窄，以致親子間容易造成磨擦；(2) 因經濟狀況稍遜，而減少了家庭外出活動及孩童的多元體驗機會。計劃透過為兒童提供學習支援、舉辦親子活動、家長小組等服務，以促進親子關係、提升處理衝突技巧。同時，計劃中亦著重義工配對，由固定的中心義工每次親自烹調老火湯，並帶同探訪服務對象。藉此向服務對象給予關懷，並協助建立劏房家庭在社區中的支援網絡。

"Sub-divided units Family Care Action

With the sponsor of Sponsored by the Council for World Mission/Nethersole Fund, Fanling Family Centre held a one-year "Sub-divided units Family Care Action" programme this year. We targeted those children and families who are living in Sub-divided units in Luen Wo Market in Fanling. In response to the characteristics of these families, such as: (1) the living environment is so narrow that it is easy to cause friction between parents and children; (2) due to the poor economic situation, it reduces the opportunities for family activities and children's experience. We provided learning support, parent-child activities, parent groups and other services for children, to promote parent-child relationships and enhance conflict management skills. At the same time, we also focused on volunteer matching to build a support network for the mortal family in the community.



北區基層社區經濟網絡計劃

鑑於北區地區貧窮問題每況愈下，北區弱勢基層居民難以依靠區內的「主流經濟」謀生，香港恩霖社區服務中心在公益金的支助下遂以「社區經濟」為弱勢基層居民提供出路。本計劃以「社區經濟」作為服務手法，以社區為本，採用自下以上的街坊參與及動員模式，連結區內的基層居民、民間組織、區內小店，以至地區環境及社區資源，建立互惠互利的網絡平台，回應地區貧窮的問題，讓基層居民得以藉此提升收入、紓緩開支，發揮區內居民擁有未受市場利用的才能、技術與經驗，來服務其他社群中的成員，提升生活質素，促進地區經濟多元發展。

North District Grassroots Community Economic Network Plan

With the sponsor by the Hong Kong Community Chest, Yan Lam Community Service Centre serves a low-income public housing estate, mortuary tenant, recipients with government subsidy (CSSA, booklet Allowance, low-income Working Family Allowance in to Encourage Employment Transport Allowance and/or Care Fund) with reciprocal market projects, urban and rural program, North District grassroots guided tours and DIY Products promotes the community-based community economy in the North District and establishes a network of partnerships to leverage the expertise of the grassroots residents in the district to enable the grassroots to enhance their income, ease their expenditure and enhance their quality of life. And strengthen the social capital of the disadvantaged grassroots residents. Promote grassroots residents to enhance their sense of self-affirmation and efficacy, re-establish self-worth and dignity, transform the weakened groups that are neglected and marginalized into independent community producers and service providers, and empower the vulnerable grassroots residents. To bring talents, technologies and experience of residents in the region that are not used by the market, serve members of other communities, and share unused resources in the area, including the remaining materials of the parties, the idle space in the area, the historical culture and ecology of the area etc. To promote the diversification and sustainable development of the regional economy and open up the living space of the disadvantaged grassroots residents.



鳴謝 ACKNOWLEDGEMENT

2018/2019 本處及轄下各服務單位有賴下列機構及人士的協助，謹此致謝（排名不分先後）

伯特利輔導中心

悠悠教育基金

北區區議會

社會福利署

世界傳道會

那打素基金

公民教育委員會

北區青年活動委員會

安老事務委員會

民政事務局青年發展委員會

禁毒基金

敬老護老愛心會

明愛屯門綜合家庭服務中心

張慶華慈善基金

北區公民教育委員會

青年事務委員會

社區投資共享基金

On the behalf of beneficiaries, we extend our sincere thanks to all of them for supporting our work in the year of 2018/2019. Owing to limited space, we regret for being unable to print all their names.

Bethel Pastoral Counseling Centre

Serenity Foundation

North District Council

Social Welfare Department

The Council for World Mission

Nethersole Fund

Committee on the Promotion of Civic Education

Youth Development Programme Committee (North District)

Elderly Commission

Youth Development Commission

Beat Drugs Fund

Care for The Elderly Association Limited

Cartias Tuen Mun Integrated Family Service Centre

Cheung Hing Wah Foundation

Civil Education Committee (North District)

Commission on Youth

Community Investment and Inclusion Fund(CIIF)

創毅物業服務顧問有限公司

教育局 - 教育統籌委員會及策劃分部
延伸支援計劃組

青春耆

惜食堂

循理會屯門青少年綜合服務中心

北區民政事務處

懲教署

香港迪士尼樂園

香港哥爾夫球會

香港房屋委員會

香港史氏智能開發有限公司

香港基督教女青年會

香港基督教女青年會蝴蝶灣綜合社會服務處

IN 義工團

屯門區少年警訊

古天樂慈善基金

康樂及文化事務處

屯輝長者學苑

保良局志豪小學

賽馬會屯門青少年綜合服務中心

基督少年軍 346 分隊

基督教信望愛堂

香港公益金

香港社會服務聯會

屯門青年協會

香港紅十字會

香港上海滙豐銀行有限公司

電影、報刊及物品管理辦事處

屯門警區警民關係組

屯門區議會

屯門區婦聯

基督教聯合那打素社康服務

Creative Property Services Consultants Limited

Education Bureau-Education Commission and Planning Division

Eldolescent

Food Angel

Free Methodist Church Leung Tin Children &
Youth Integrated Services Centre

Home Affairs Department (North District)

Hong Kong Correctional Services

Hong Kong Disneyland

Hong Kong Golf Club

Hong Kong Housing Authority

Hong Kong Shi Intelligent Development Limited

Hong Kong Young Women's Christian Association

Hong Kong YWCA Jockey Club
Butterfly Bay Integrated Social Service Centre

IN Volunteer Team

Junior Police Call (Tuen Mun)

Koo Tin Lok Charitable Foundation

Leisure and Cultural Services Department

Morning Hope Elderly School

Po Leung Kuk Horizon East Primary School

The Boys' & Girls' Clubs Association of Hong Kong-JC TUEN MUN C&Y ISC

The Boys' Brigade, Hong Kong, Team 346

The Christian the Faith Hope Love Church

The Community Chest of Hong Kong

The Hong Kong Council of Social Service

The Hong Kong Federation of Youth Groups

The Hong Kong Red Cross

The Hongkong and Shanghai Banking Corporation Limited

The Office for Film, Newspaper and Article
Administration of the Hong Kong Special Administrative Region

The Police Community Relations Officer of Tuen Mun District

Tuen Mun District Council

Tuen Mun Women Association

United Christian Nethersole Community Health Service

大興長者鄰舍中心 - 中心設施裝修工程

TAI HING NEIGHBOURHOOD ELDERLY CENTER FACILITY ENHANCEMENT WORK

在「長者中心設施改善計劃」（改善計劃）的支持下，大興長者鄰舍中心得以進行設施優化工程，配合各項服務發展的需求，同時為服務使用者帶來一個清新、舒適的環境及空間。

With the support by improvement Programme of Elderly Centres (IPEC), Tai Hing Neighbourhood Elderly Center was able to carry out facility enhancement work so as to cater to the need for development of various services, as well as to provide a fresh and comfortable environment and space for users.





感謝支持 — 賣旗日 THANKS FOR SUPPORT — FLAY DAY

承蒙各界支持及指教，本會 2018/2019 年之新界區賣旗日於 2018 年 4 月 21 日（六）完滿結束。我們衷心感激各位慷慨解囊及支持，讓是次籌款活動得以順利完成並籌得善款 \$727,336 有關善款將用作支持本會各單位於 2019/2020 年度推行各項弱勢家庭服務之經費。

With the support by different people and sectors, we finished our 2018/2019 New Territories Flag Day on 21st April 2018 (Sat). We would like to express our deepest thanks to all who generously given and support do that the flag selling successfully rasied a total of \$727,336. The donations will be used as funds for launching different kinds of service for underprivileged families in 2019/2020.

佛教志蓮小學

播道書院

陳樹渠紀念中學

香港道教聯合會純陽小學

五旬節于良發小學

五旬節靳茂生小學

仁濟醫院永隆幼稚園

順德聯誼總會譚伯羽中學

真光書院

元朗大會堂少數族裔人士支援服務中心

仁愛堂蕭淑貞「仁間有愛」社區支援中心

竹園區神召會康樂庇護工場

國際四方福音會建生堂耆年中心

鄰舍輔導會富泰鄰里康齡中心

Chi Lin Buddhist Primary School

Evangel College

Chan Shu Kui Memorial School

HKTA Shun Yeung Primary School

Pentecostal Yu Leung Fat Primary School

Pentecostal Gin Mao Sheng Primary School

Yan Chai Hospital Wing Lung Kindergarten

Shun Tak Fraternal Association Tam Pak Yu College

Hong Kong True Light College

Yuen Long Town Hall Support Service Centre for Ethnic Minorities

Yan Oi Tong Siu Cheng Siu Ching Community Support Centre

Pentecostal Church of Hong Kong Sheltered Workshop

Church of the Foursquare Gospel Kin Sang Elderly Centre

The Neighbourhood Advice Action Council

FuTai Neighbourhood Elderly Centre



萬國宣道浸信會田裕浸信會長者鄰舍中心

中華基督教會蒙黃花沃紀念小學

基督教四方福音會深培中學

中華基督教會譚李麗芬紀念中學

基督教香港信義會靈愛中心

基督教互愛中心

香港基督少年軍 179 分隊

香港基督少年軍 272 分隊

香港基督少年軍 232 分隊

Tin Yue Baptist Church Elderly Centre,
Association of Baptist for World Evangelism

CCC Mong Wong Far Yok Memorial Primary School

Simple Memorial Secondary School

The Church of Christ in China
Tam Lee Lai Fun Memorial Secondary School

ELCHK, Ling Oi Centre

Wu Oi Christian Centre

The Boys' Brigade, Hong Kong, Team 179

The Boys' Brigade, Hong Kong, Team 272

The Boys' Brigade, Hong Kong, Team 232

感謝支持 — 敬老護老愛心券 THANKS FOR SUPPORT — CHARITY TICKET FOR RESPECTING AND CARING THE ELDERLY

本會 4 個服務單位由 2002 年開始參與敬老護老愛心會舉辦的「敬老護老愛心」慈善籌款運動，一直深受各界熱心人士鼎力支持，以有需要的長者服務能得以推展。部份單位更在沒有政府津助的情況下，以多元化的方式，為北區及大埔區的長者提供支援及發展的服務，當中亦包括社會服務較缺乏的鄉郊地區。

Four of the service units of the Centre started to participate in the "Charity Ticket" organized by the Care for the Elderly Association Limited. We have received longstanding and full support by enthusiastic people from all sectors for so that the services for needy elderly could be provided. Some of the units did not even get Government subsidy in providing various forms of support and development services for the elderly living in North and Tai Po District. The services also covered remote village area which lacked social services.

基督教粉嶺神召會小學

曾梅千禧學校

仁濟醫院永隆幼稚園 / 幼兒中心

香港基督少年軍 232 分隊

港澳信義會黃陳淑英紀念學校

中華基督教會元朗真光小學

五旬節新茂生小學

順保良局田家炳小學

Fanling Assembly of God Church Primary School

Tsang Mui Millennium School

Yan Chai Hospital Wing Lung Kindergarten

The Boy's Brigade, Hong Kong, Team 232

HKMLC Wong Chan Sook Ying Memorial School

C.C.C. Chun Kwong Primary School

Pentecostal Gin Mao Sheng Primary School

PLK Tin Ka Ping Primary School



各服務單位服務數據摘要

SERVICE STATISTIC FIGURES

各單位
接受個案
Number of
Cases

服務統計
Services
Statistic

大興長者鄰舍中心

Tai Hing Neighbourhood Elderly Center

會員人數 Number of Members		偶到服務 Walk-in Services (Person Times)	開放節數 Opening Session (Sessions)
長者 Elderly	1,020	34,683	487
義工 Volunteer	127		
護老者 Care giver	159		
個案 Cases	151		
服務隱蔽或需要照顧長者 Hidden and vulnerable elderly		63	

白普理上水家庭中心

Bradbury Sheung Shui Family Centre

會員人數 Number of Members		偶到服務 Walk-in Services (Person Times)	諮詢服務 Enquiries (Person Times)	開放節數 Opening Session (Sessions)
個人會員	813	39,682	44,968	718
家庭會員	5,798			

白普理上水家庭中心綜合家居照顧服務隊

Bradbury Sheung Shui Family Centre Integrated Home Care Services Team

個案類別 Type of Cases	長者個案 Elderly	傷殘個案 Disabled	家庭特殊需要個案 Special Family Need	特別體弱個案 Frail	總個案 Total
	751	19	27	10	797

粉嶺家庭中心

Fanling Family Centre

會員人數 Number of Members	偶到服務 Walk-in Services(Person Times)	諮詢服務 Enquiries (Person Times)	開放節數 Opening Session (Sessions)
2,115	7,104	176	592

恩霖社區服務中心

Yam Lam Community Service Centre

會員人數 Number of Members	偶到服務 Walk-in Services(Person Times)	諮詢服務 Enquiries (Person Times)	開放節數 Opening Session (Sessions)
2,342	32,508	44,892	774

恩全鄰舍中心

Yan Tsuen Neighbourhood Center

會員人數 Number of Members	偶到服務 Walk-in Services(Person Times)	諮詢服務 Enquiries (Person Times)	開放節數 Opening Session (Sessions)
120	250	300	520

大興長者鄰舍中心

Tai Hing Neighbourhood Ederly Center

服務類別 Services Item	活動次數 / 人數 Number of Services / Member	服務人次 Person Times	全年舉辦的小組、 活動數目 Total number of groups and activities (Annual)	服務推廣 / 建立策略 夥伴數目 Service Promotion and Strategic Partner	統一評估服務 Standardised Care Need Assessment
推廣公眾教育認知障礙症服務 Community Education of Dementia	9	-	155	27	59
認知障礙症訓練 / 活動小組 Dementia Training / Activity	6	56			
認知障礙症職員訓練 Staff Training for Dementia Service	23 節	-			
需支援護老者活動 / 小組 Carer Supportive Activities / Groups	10	116			
需支援護老者服務 Carer Supportive Service	39	159			

白普理上水家庭中心

Bradbury Sheung Shui Family Centre

服務類別 Services Item	活動次數 Number of Services	服務人次 Person Times
課餘託管服務 After School Care	204	8,772
幼兒親子活動 Early Childhood and Family Activities	1,492	11,889
兒童、青少年發展及成人興趣小組 Children, Teenagers development and Adult's interest group	2,467	19,135
家庭及社區教育活動 Family and Community Education Activities	82	3,884
鄉郊服務 Rural Service	44	7,920
長者社群發展活動 Elderly Social Development Activities	49	1,580
家居支援服務 Home Care Service	12,517	12,517
合共服務 Total Services	16,855	65,697

白普理上水家庭中心綜合家居照顧服務隊

Bradbury Sheung Shui Family Centre Integrated Home Care Services Team

服務類別 Services Item	活動次數 Number of Services	服務人次 Person Times
家居服務 Home Care Service	78,811	6,998
護理服務 Nursing Service	2,206	1,893
社交活動 Social Activities	10	1,780
合共服務 Total Services	81,027	10,671

粉嶺家庭中心

Fanling Family Centre

服務類別 Services Item	活動次數 Number of Services	服務人次 Person Times
託管服務 After School Care	79	892
功課輔導 Tuition	892	5,658
青少年成長及培育活動 Youth Development	198	2,898
兒童教育課程 Children Education	797	7,144
兒童興趣課程 Children Interest Group	536	3,745
社區活動 Community Program	237	2,714
家長教育課程 Parenting Program	50	1,866
家長興趣課程 Parent Interest Group	40	124
家庭活動 Family Program	47	1,038
圖書閣服務 Library	-	1,617
義工服務 Volunteer Service	22	275
合共服務 Total Services	2,898	27,971

恩霖社區服務中心
Yam Lam Community Service Centre

服務類別 Services Item	活動項目 Number of Items	活動次數 Number of Services	服務人次 Person Times
靈智及生命教育活動 Religious Services and Life Education Activities	69	218	1,446
課餘託管服務 After School Care	343	6,084	17,098
特殊教育需要、幼兒及親子小組 / 活動 Special Education Needs, Early Childhood and Family Activities	78	540	3,467
居民網絡及支援服務 Community Network and Supporting Service	107	295	2,977
長者資源及支援服務 Elderly Service	98	637	16,966
兒童 / 青少年興趣小組 / 活動 Children and Youth Program	541	3,755	7,536
合共服務 Total Services	1,236	11,529	49,490

恩全鄰舍中心
Yan Tsuen Neighbourhood Center

服務類別 Services Item	活動次數 Number of Services	服務人次 Person Times
愛心糧倉短期食物支援計劃 Love Food Bank	62	242
耆樂融融表關愛 Elderly Program	3	110
愛心午膳吃得樂 Love Luncheon	26	776
滿 JOY 功課輔導服務計劃 After-School Care Services	200	486
興趣班 Interest Group	40	250
家長講座 Parenting Talk	8	240
合共服務 Total Services	339	2,104

學校服務隊
School Services Team

服務類別 Services Item	學校數目 School	組 / 團 Group	日數 / 次數 Days/Times	服務人次 Person Times
全方位學生輔導服務 Comprehensive Student Guidance Service	9	-	1,050	10,740
成長的天空計劃 (小學) Understanding Adolescent Project	32	80 組	684	11,039
特殊教育需要社區支援服務 Special Educational Needs Support Service	5	-	150	4,052
校本課後學習及支援計劃 School-based After School Learning and Support Programmes: Community-based Projects	8	-	390	36,772
境外遊學服務 Outbound Study Tour Service	6	12 團	35	2,855
家長及學生成長 Parenting Education and Student Development	44	-	839	21,947
合共服務 Total Services	104	-	3,148	87,405

恩錫鄰舍中心
Zion Neighborhood Centre

服務類別 Services Item	活動次數 Number of Services	服務人次 Person Times
長者資源及支援服務 Elderly Service	16	96
功課輔導 Tutition	72	209
兒童 / 青少年興趣小組 / 活動 Children and Youth Program	7	129
居民網絡及支援服務 Community Network and Supporting Service	12	397
輔導及轉介 Counselling and Referral	93	139
家長講座 Parenting Talk	1	16
合共服務 Total Services	201	986

白普理上水家庭中心綜合家居
照顧服務隊
服務範圍
BRADBURY
SHEUNG SHUI FAMILY CENTRE
INTEGRATED HOME CARE SERVICES TEAM
SERVICES SCOPE



新界北區的
North District in New Territories

公共房屋 Public Housing :
彩園邨、太平邨、彩蒲苑、旭埔苑、清河邨、祥龍圍邨
Choi Yuen Estate Yuk Po Court
Tai Ping Estate Ching Ho Estate
Choi Po Court Cheung Lung Wai Estate

鄉郊 Countryside :
石湖墟、吳屋村、蕉徑村、丙崗村、蓮塘尾、唐公嶺、大頭嶺、木湖、營盤村、金錢、羅湖、雞嶺、古洞、沙嶺、河上鄉、天平山村、塘肚山村、缸瓦甫、坑頭、虎地坳道、華山村、恐龍坑、新屋嶺、週田村、燕崗、蓮麻坑、鳳凰湖、東風坳、松柏塢、馬草壟、牛池、上水圍、天光甫、客家圍、鹿尾村、杉山、鳳崗、石仔嶺、長甫頭、長漚、麒麟村、塘角、掃管甫、陳屋甫、竹園、缸窰、老鼠嶺、下香園、銅鑼坑、較寮村、塘坊、香園圍、鷓鴣坑、信義新村、橫漚、松園下、簡頭圍、南坑、圓嶺仔
ChanUk Po Ha Heung Yuen Kan Tau Wai Lo Shue Ling
Cheung Lek Hakka Wai Kau Liu Village Luk Mei Tsuen
Cheung Po Tau Hang Tau Ki Lun Tsuen Luohu
Chow Tin Tsuen Heung Yeun Wai Kong A Ma Tso Lung
Chuk Yuen Ho Sheung Heung Kong Yiu Muk Wu
Fu Tei Ao To Hung Lung Hang Kwu Tung Nam Hang
Fung Kong Kai Leng Lin Ma Hang Ng Uk Tsuen
Fung Wong Wu Kam Tsin LinTong Mei Ngau Tei
Ping Kong So Kwun Po Tse Koo Hang Yin Kong
San Uk Ling Tai Tau Leng Tsiu Keng Ying Pun
Sha Ling Tin Kwong Po Tsung Pak Long Yuen Ling Chai
Cham Shan Tin Ping Shan Village Tsung Yuen Ha Shek Tsai Leng
Tong Fong Tung Fung Au Shek Wu Hui Tong Kok
Tung Lo Hang Sheung Shui Village Tong Kung Leng Wah Shan Tsuen
Shun Yee San Tsuen Tong To Shan Tsuen Wang Hang

私人屋苑 Private Estate :
華慧園、威尼斯花園、維也納花園、欣翠花園、海裕苑、翠彤苑、奕翠園、上水中心、上水名都、蔚翠花園、龍豐花園、新都廣場、翠麗花園、順欣花園
Camellia Court Sheung Shui Centre Cheerful Park Sheung Shui Town Centre
Eden Garde Tsui Lai Garden Glamour Garden Venice Garden
Greenpark Villa Vienna Garden Lung Fung Garden Woodland Crest
Metropole Plaza Sunningdale Garden

學校服務隊協作學校及團體 (排名不分先後)

SCHOOL SERVICES TEAM

PARTNERSHIP SCHOOL AND ORGANIZATIONS

九龍城浸信會禧年(恩平)小學
Kowloon City Baptist Church Hay Nien
(Yan Ping) Primary School

上水宣道小學
Alliance Primary School, Sheung Shui

上水惠州公立學校
Wai Chow Public School (Sheung Shui)

大角咀天主教小學
Tai Kok Tsui Catholic Primary School

大埔舊墟公立學校
Tai Po Old Market Public School

中華基督教會元朗真光小學
C.C.C. Chun Kwong Primary School

中華基督教會方潤華小學
C.C.C. Fong Yun Wah Primary School

中華基督教會何福堂小學
C.C.C. Hoh Fuk Tong Primary School

中華基督教會基全小學
C.C.C. Kei Tsun Primary School

五旬節于良發小學
Pentecostal Yu Leung Fat Primary School

五旬節新茂生小學
Pentecostal Gin Mao Sheng Primary
School

五邑工商總會學校
Five Districts Business Welfare
Association School

仁愛堂劉皇發夫人小學
Yan Oi Tong Madam Lau Wong Fat
Primary School

仁濟醫院永隆幼稚園 / 幼兒中心
Yan Chai Hospital Wing Lung
Kindergarten

元朗朗屏邨惠州學校
YL Long Ping Estate Wai Chow School

元朗寶覺小學
Yuen Long Po Kok Primary School

天水圍循道衛理小學
Tin Shui Wai Methodist Primary School

天主教伍華小學
Ng Wah Catholic Primary School

方樹福堂基金方樹泉小學
F.S.F.T.F. Fong Shu Chuen Primary
School

世界龍岡學校黃耀南小學
L.K.W.F.S.L.Wong Yiu Nam Primary
School

打鼓嶺嶺英公立學校
Ta Ku Ling Ling Ying Public School

石籬天主教小學
Shek Lei Catholic Primary School

西貢崇真天主教學校
Sai Kung Sung Tsun Catholic School
(Primary Section)

何明華會督銀禧中學
Bishop Hall Jubilee School

佛教志蓮小學
Chi Lin Buddhist Primary School

沙田循道衛理中學
Sha Tin Methodist College

沙頭角中心小學
Sha Tau Kok Central Primary School

拔萃男書院附屬小學
Diocesan Boys' School Primary Division

上水東莞學校
Tung Koon School (Sheung Shui)

東華三院港九電器商聯會小學
TWGHs Hong Kong and Kowloon
Electrical Appliances Merchants
Association Limited School

東華三院黃士心小學
T.W.G.Hs. Wong See Sum Primary School

金錢村何東學校
Kam Tsin Village Ho Tung School

保良局田家炳小學
Po Leung Kuk Tin Ka Ping Primary School

保良局莊啟程小學
P.L.K. Chong Kee Ting Primary School

保良局莊啟程第二小學
PLK Vicwood KT Chong No.2 Primary
School

柏立基教育學院校友會何壽基學校
S.R.B.C.E.P.S.A. Ho Sau Ki School

柏立基教育學院校友會李一諤紀念學校
S.R.B.C.E.P.S.A. Lee Yat Ngok Memorial
School

迦密梁省德學校
Carmel Leung Sing Tak School

香海正覺蓮社佛教正覺蓮社學校
HHCKLA Buddhist Ching Kok Lin
Association School

香海正覺蓮社佛教正慧小學
HHCKLA Buddhist Wisdom Primary
School

香海正覺蓮社佛教陳式宏學校
HHCKLA Buddhist Chan Shi Wan Primary
School

香港紅十字會雅麗珊郡主學校
Hong Kong Red Cross Princess
Alexandra School

香港教育大學賽馬會小學
The Education University of Hong Kong
Jockey Club Primary School

香港道教聯合會純陽小學
HKTA Shun Yeung Primary School

神召會華人同工聯會景盛幼稚園
CCWF King Shing Kindergarten

馬鞍山靈糧小學
Ma On Shan Ling Liang Primary School

基督教基督教粉嶺神召會小學
Fanling Assembly of God Church Primary
School

田家炳中學
Tin Ka Ping Secondary School

深培中學
Semple Memorial Secondary School

曾梅千禧學校
Tsang Mui Millennium School

港澳信義會黃陳淑英紀念學校
HKMLC Wong Chan Sook Ying Memorial
School

舊色園主辦可譽中學暨可譽小學
Ho Yu College and Primary School
(Sponsored By Sik Sik Yuen)

聖公會何澤芸小學
S.K.H. Tsing Yi Estate Ho Chak Wan
Primary School

聖公會基樂小學
S.K.H. Kei Lok Primary School

聖公會嘉福榮真小學
S.K.H. Ka Fuk Wing Chun Primary School

聖公會榮真小學
S.K.H. Wing Chun Primary School

聖公會蒙恩小學
S.K.H. Mung Yan Primary School

聖公會靈愛小學
S.K.H. Ling Oi Primary School

路德會呂祥光中學
Lui Cheung Kwong Lutheran College

福德學社小學
Fuk Tak Education Society Primary
School

鳳溪第一小學
Fung Kai No.1 Primary School

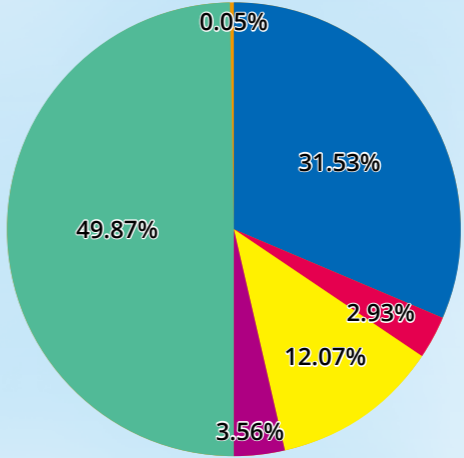
鳳溪創新小學
Fung Kai Innovative School

鳳溪廖萬石堂中學
Fung Kai Liu Man Shek Tong Secondary
School

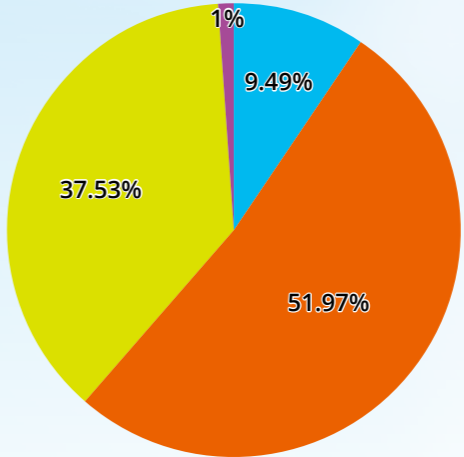
財務概覽

FINANCIAL REVIEW

收入分類 Analysis of Income	總額 Amount	佔總收入比例 Proportion (%)
■ 社會福利署津助 SWD Subventions	\$15,502,709	31.53%
■ 公益金津助 Community Chest Fund	\$1,438,174	2.93%
■ 其他基金津助 Other Funding	\$5,932,814	12.07%
■ 捐款及籌款 Donation and Fundraising	\$ 1,748,506	3.56%
■ 服務收費 Programme Income	\$24,522,138	49.87%
■ 其他收入 Others	\$ 23,716	0.05%
總收入 Total Income	\$ 49,168,057	100%



支出分類 Analysis of Expenditures	總額 Amount	佔總支出比例 Proportion (%)
■ 基本運作開支 General Operations	\$4,352,206	9.49%
■ 薪金及員工福利 Personal Emoluments	\$23,830,568	51.97%
■ 服務及活動開支 Direct Programmes Expenses	\$17,209,107	37.53%
■ 其他開支 Others	\$460,572	1%
總支出 Total Expenditures	\$45,852,453	100%



核數師報告

AUDITOR'S REPORT

NGO : HONG KONG EVANGELICAL CHURCH SOCIAL SERVICE LIMITED

1 APRIL 2018 TO 31 MARCH 2019

	Notes	Total 2018-19 \$	Total 2017-18 \$
A. INCOME			
1. Lump Sum Grant			
a. Lump Sum Grant (excluding Provident Fund)	1b	12,594,205.00	11,024,887.00
b. Provident Fund	1c	858,782.00	758,023.00
2. Fee Income	2	1,341,429.15	1,253,571.90
3. Central Items	3a	790,913.00	870,994.00
4. Rent & Rates	4	321,482.00	335,423.00
5. Other Income	5	293,646.32	469,710.00
6. Interest Received		21,073.26	14,702.43
TOTAL INCOME		16,221,530.73	14,727,311.33
B. EXPENDITURE			
1. Personal Emoluments			
a. Salaries		9,224,261.30	7,969,748.32
b. Provident Fund	1c	680,594.14	599,641.19
c. Allowances		---	---
Sub-total	6	9,904,855.44	8,569,389.51
2. Other Charges	7	4,734,775.49	4,516,761.69
3. Central Items	3b	790,913.00	870,994.00
4. Rent & Rates	4	288,482.00	324,250.00
TOTAL EXPENDITURE		15,719,025.93	14,281,395.20
C. SURPLUS/(DEFICIT) FOR THE YEAR	8	502,504.80	445,916.13

The Annual Financial Report on pages 2 to 7 have been prepared in accordance with the requirements as set out in the Lump Sum Grant Manual.

	Snapshot Staff \$	6.8% and Other Posts \$	Total \$
Provident Fund Contribution Subvention Received	139,958.00	718,824.00	858,782.00
Provident Fund Contribution Paid during the Year	(150,670.85)	(529,923.29)	(680,594.14)
(Deficit) / Surplus for the Year	(10,712.85)	188,900.71	178,187.86
Add : Surplus b/f	24,350.16	1,987,380.48	2,011,730.64
Add: Adjustments to opening balance as previously agreed with SWD	---	---	---
Add: Additional subvention received for previous year(s)	---	---	---
Less: Refund to Government	11,040.00	---	11,040.00
Surplus c/f	2,597.31	2,176,281.19	2,178,878.50

HONG KONG EVANGELICAL CHURCH SOCIAL SERVICE LIMITED CONSOLIDATED STATEMENT OF COMPREHENSIVE INCOME FOR THE YEAR ENDED 31 MARCH, 2019

	Note	2019 HK\$	2018 HK\$
Income			
Activity income		4,139,194	4,442,545
Bank interest income		23,716	14,809
Beat drugs fund income		215,955	---
Community chest fund programme income	10	1,438,174	1,157,291
Community care fund assistance programme income	11	633,829	150,610
Course, day care and tuition fee		9,747,571	6,861,719
Donation income		972,970	987,429
Flag day fund raising income	12	727,336	654,793
Fund raising income		---	65,305
Other grants and subvention		5,083,030	3,231,052
Programme income		207,775	326,993
Special one-off grant		48,200	14,896
School project fee		8,459,599	8,067,430
Service income		1,656,448	1,509,659
Social welfare subvention	13	15,500,677	14,009,857
Subscription fee		112,175	115,620
Sundry income		199,376	194,310
		49,166,025	41,804,323
Expenditure			
Activity and programme expenses		6,275,570	4,617,046
Administration fee		61,010	31,557
Advertising and recruitment		81,622	58,965
Auditors' remuneration		99,100	94,100
Bank interest and charges		5,283	4,150
Beat drugs fund expenses		12,307	---
Books, newspaper and magazine		16,990	16,700
Cleaning expenses		183,930	178,447
Community chest fund programme expenses		214,381	320,652
Community care fund assistance programme expenses	11	531,436	158,206
Consultancy fee		---	280,575
Course, day care and tutorial class expenses		4,706,797	4,496,128
Depreciation		997,028	640,421
Donation expenses		10,336	5,918
Flag day fund raising expenses	12	53,556	38,516
Food		988,613	956,986
Insurance		195,529	199,624
Mandatory and ORSO contribution		1,608,746	1,349,099
Membership fee		4,700	4,700
Messing expenses		98,534	43,579
Minor purchases, repair and maintenance		583,620	539,698
Motor vehicle expenses		59,354	83,521
Other service expenses		141,596	50,715
Postage		9,026	6,004
Printing and stationery		201,097	217,994
Professional and religious fee		286,318	286,218
Rent and rates		1,508,602	1,495,917
Salaries	14	22,221,822	20,310,154
School project expenses		2,001,522	2,736,586
Special one-off grant expenses		31,458	14,896
Sub-contracting services		138,564	135,175
Staff Welfare		33,139	58,013
Subsidies expenses		---	29,148
Sundry expenses		386,697	379,401
Telephone and fax		89,912	76,501
Training expenses		158,577	310,414
Travelling		374,008	371,666
Tutor expenses		1,019,069	568,391
Utility expenses		460,572	456,866
		45,850,421	41,622,647
Total comprehensive surplus for the year		3,315,604	181,676

HONG KONG EVANGELICAL CHURCH SOCIAL SERVICE LIMITED
CONSOLIDATED STATEMENT OF FINANCIAL POSITION
AS AT 31 MARCH, 2019

	Note	2019 HK\$	2018 HK\$
ASSETS AND LIABILITIES			
Non-current assets			
Plant and equipment	4	3,207,096	936,847
Improvement works in progress	5	---	288,154
		<u>3,207,096</u>	<u>1,225,001</u>
Current assets			
Accounts and other receivables		3,336,101	2,034,768
Deposits and prepayments		589,610	774,166
Time deposit		1,533,359	1,522,919
Cash and cash equivalents	6	13,024,855	11,651,917
		<u>18,483,925</u>	<u>15,983,770</u>
Current liabilities			
Accounts payable and accruals		2,900,669	2,147,173
Receipt in advance	7	3,243,969	3,407,943
Amounts due to related parties	8	4,643,601	4,263,226
		<u>10,788,239</u>	<u>9,818,342</u>
Net current assets		<u>7,695,686</u>	<u>6,165,428</u>
Non-current liabilities			
Provision for long service payment		649,705	452,956
Net assets		<u>10,253,077</u>	<u>6,937,473</u>
RESERVES & FUNDS			
General fund		3,119,979	2,367,232
Renovation fund		---	162,000
Surplus reserve	9	4,460,467	3,878,809
Reserve for future development		94,409	94,409
Fixed assets fund		2,356,364	434,934
The Sir Robert Ho Tung charitable fund		89	89
Charitable activities reserve		221,769	---
Total reserves & funds		<u>10,253,077</u>	<u>6,937,473</u>

董事及管理委員名錄 LIST OF DIRECTORS AND MANAGEMENT BOARD MEMBERS (2018/2019)

社會服務處 Social Service Limited Coordination Office

主席 Chairperson	： 陳汝生牧師 Rev Chan Yu Sang	陳金蓮牧師 Rev Chan Kam Lin
成員 Members	： 葉寶言先生 Mr Yip Po Yin (Treasurer)	梁穎賢女士 Ms Leung Wing Yin
	麥麗嫻牧師 Rev Mak Lai Sim	楊蘭琴姑娘 Ms Yeung Lan Kam
	文楚君牧師 Rev Man Chor Kwan	

大興長者鄰舍中心 Tai Hing Neighborhood Elderly Center

主席 Chairperson	： 文楚君牧師 (中心總監) Rev Man Chor Kwan (Centre Director)	
委員 Committee	： 陳彼信先生 Mr Chan Pei Shun	黃笑薇女士 Ms Wong Siu Mei
	梁志文先生 Mr Leung Chi Man	羅麗明女士 Ms Law Lai Ming

白普理上水家庭中心 Bradbury Sheung Shui Family Centre

白普理上水家庭中心綜合家居照顧服務隊

Bradbury Sheung Shui Family Centre Integrated Home Care Services Team

學校服務隊 School Services Team

恩霖社區服務中心 Yan Lam Community Service Centre

主席 Chairperson	： 陳汝生牧師 (中心總監) Rev Chan Yu Sang (Centre Director)	
成員 Members	： 張杰先生 Mr Chang Kit	方恩傑先生 Mr Fong Yan Kit
	冼家慧小姐 Ms Sin Ka Wai	
列席 Nonvoting	： 曾玉英女士 Ms Tsang Yuk Ying	葉建忠先生 Mr Yip Kin Chung

粉嶺家庭中心 Fanling Family Centre

主席 Chairperson	： 陳金蓮牧師 (中心總監) Rev Chan Kim Lin (Centre Director)	
成員 Members	： 楊偉業牧師 Rev Yeung Wai Yip	蔡妙虹女士 Ms Tsoi Miu Hung
	陳立德先生 Mr Chan Lap Tak	阮小娟女士 Ms Yuen Siu Kuen
	黃佩華女士 Ms Wong Pui Wai	王學清先生 Mr Wong Hok Ching
列席 Nonvoting	： 黃志勇先生 Mr Wong Chi Yung	

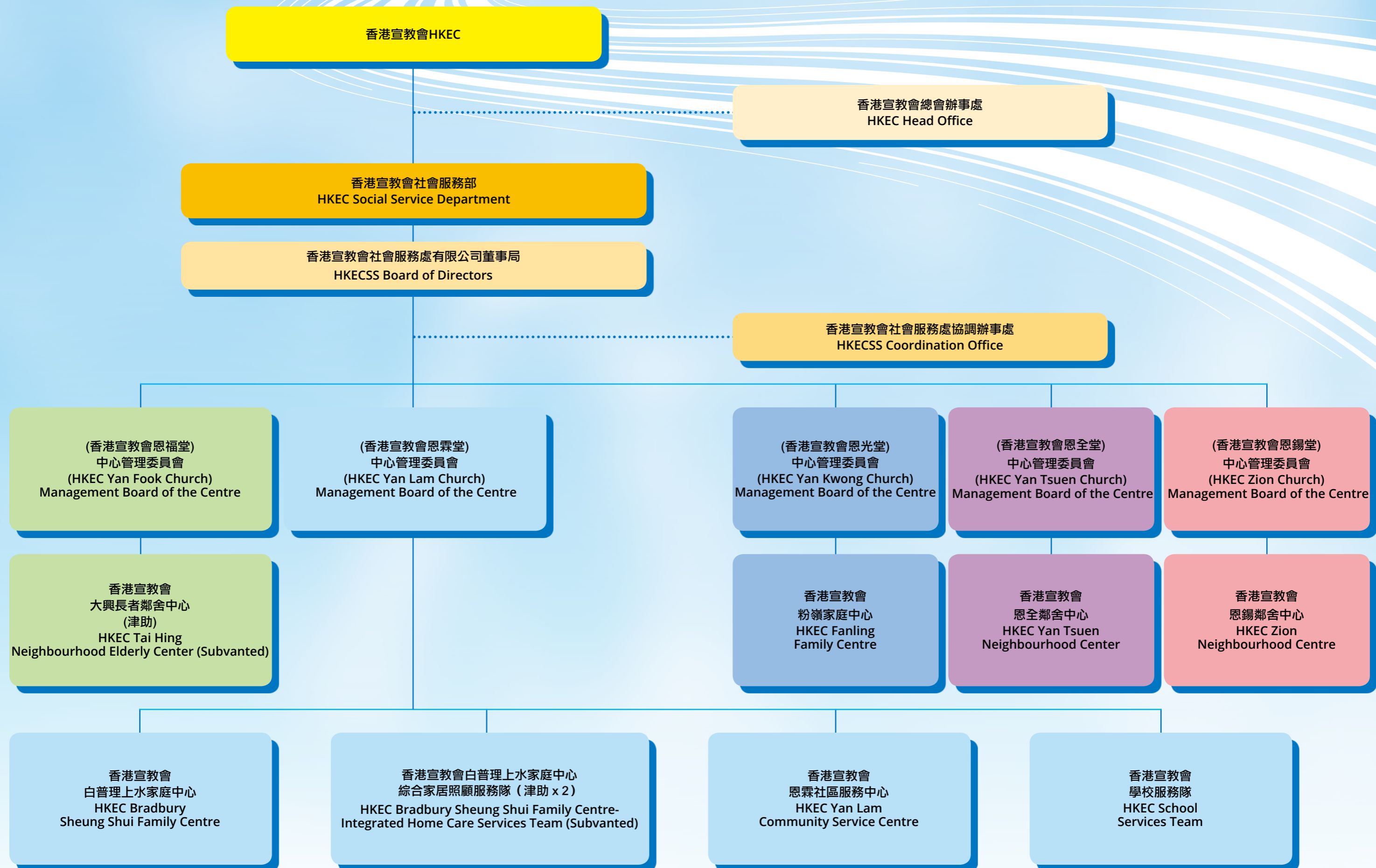
恩全鄰舍中心 Yan Tsuen Neighborhood Center

主席 Chairperson	： 麥麗嫻牧師 (中心總監) Rev Mak Lai Sim (Centre Director)	
委員 Committee	： 鄭建偉先生 Mr Cheng Kin Wai	梁穎賢女士 Ms Leung Wing Yin
	張旭民先生 Mr Cheung Yuk Man	

恩錫鄰舍中心 Zion Neighborhood Centre

主席 Chairperson	： 楊蘭琴姑娘 (中心總監) Ms Yeung Lan Kam (Centre Director)	
委員 Committee	： 林偉傑先生 Mr Lam Wai Kit	陳春歡小姐 Ms Chan Chun Foon
	王敏思小姐 Ms Wong Man Sze	

架構圖 ORGANIZATION CHART



我們各服務單位

OUR SERVICE UNITS

香港宣教會大興長者鄰舍中心

是香港宣教會首間老人福利服務單位。中心秉承基督的愛，為屯門區長者提供多元化之服務，鼓勵長者享受豐盛之晚年，同時為個人、家庭之需要，提供靈性、生理、心理社群上的支援及發展服務。服務對象為年滿 60 歲或以上之長者。

主要服務

- 社交及康樂發展服務
- 健康支援服務
- 個人輔導及轉介服務
- 教育及發展性小組服務

地址：屯門大興邨興耀樓地下 15-21 號
電話：24657163 **傳真：**24562825
電郵：thelderly@hotmail.com
聯絡人：葉燕女士（中心主任）

HKEC Tai Hing Neighbourhood Elderly Center

The first social service unit of HKEC. Our services are targeted for elderly aged 60 or above. We follow Jesus Christ's love, provide comprehensive service to the elderly and enhance positive aging. Furthermore, we provide religious, psychological, physical supportive and developmental service for the needs of individuals and families.

Core Services

- Social Service and Recreation Activities
- Health Support Service
- Personal Counselling and Referral Service
- Educational and developmental Groups

Address : 15-21, G/F, Hing Yiu House, Tai Hing Estate, Tuen Mun, NT.
Tel : 24657163 **Fax :** 24562825
Email : thelderly@hotmail.com
Contact Person : Ms Yip Yin (Centre In- Charge)

成立年份
Establish Year:
1982

香港宣教會白普理上水家庭中心

為香港宣教會首間以自負盈虧方式運作的綜合家庭服務中心。以多元化的方式，為區內家庭及有需要人士提供支援及發展性質的服務；服務對象遍及兒童、青少年、家長、在職人士及長者。

主要服務

- 兒童及家長服務
- 家居支援服務
- 長者及鄉郊服務

地址：上水彩園邨彩麗樓地下 29 至 40 號
電話：26702995 **傳真：**26708985
電郵：sf@hkeccs.org
聯絡人：曾玉英女士（助理督導主任）

HKEC Bradbury Sheung Shui Family Centre

Hong Kong Evangelical Church Bradbury Sheung Shui Family Centre was the first self-financed integrated service family centre of HKEC. We provide variety of service to those families and needy in Community, beneficiaries including children, youth, parents, workers and elderly.

Core Services

- Children and parent service
- Home Care Service
- Elderly and rural service

Address : 29-40, G/F, Choi Lai House, Choi Yuen Estate, Sheung Shui, NT.
Tel : 26702995 **Fax :** 26708985
Email : sf@hkeccs.org
Contact Person : Ms Tsang Yuk Ying (Centre In- Charge)

成立年份
Establish Year:
1991

香港宣教會白普理上水家庭中心 綜合家居照顧服務隊

綜合家居照顧服務隊為香港宣教會白普理上水家庭中心轄下的服務單位，由政府提供資助。為配合家庭服務多元化的需要，中心於一九九四年向香港政府申請資助首隊家務助理隊，並於上水太平邨設立隊址，為北區居民提供到戶生活支援服務。於一九九八年八月，因應區內服務需求的增加，再獲香港政府資助第二隊家務助理隊。及後，因應長者護理服務的需求日增，於二零零四年四月，兩隊家務助理隊轉型為“綜合家居照顧服務”，並改名為“香港宣教會白普理上水家庭中心綜合家居照顧服務隊”。

主要服務

- 家居服務
- 護理服務
- 社交活動

地址：上水太平邨平靜樓地下 112-114 號
電話：26724160 **傳真：**26729640
電郵：it@hkeccs.org
聯絡人：曾玉英女士（助理督導主任）

HKEC Bradbury Sheung Shui Family Centre Integrated Home Care Team

The integrated Home Care Services Team is a government-subsidized service team of HKEC Bradbury Sheung Shui Family Centre. To response to the diversity of community demands, in 1994, the first Home Care Team.

Core Services

- Home Care Service
- Care Service
- Social Activity

Address : 112-114, G/F, Ping Ching House, Tai Ping Estate, Sheung Shui, NT.
Tel : 26724160 **Fax :** 26729640
Email : it@hkeccs.org
Contact Person : Ms Tsang Yuk Ying (Centre In- Charge)

成立年份
Establish Year:
1994

香港宣教會粉嶺家庭中心

為本會第三所社會服務中心。同樣以自負盈虧模式，為區內家庭提供綜合性服務。

主要服務

- 學童託管及家庭教育服務
- 社區教育活動
- 家庭活動及資源服務
- 義工發展及培育服務
- 宗教輔導及生活教育

地址：粉嶺華明邨添明樓地下 3 號
電話：26764010 **傳真：**26779252
電郵：hkeccfc@gmail.com
聯絡人：黃志勇先生（中心主任）

HKEC Fanling Family Centre

Fanling Family Centre is our third self-financed Social Service Centre which provides integrated social service

Core Services

- After School Care and Family Education Service
- Community Education
- Families Program and Resources
- Volunteer Development
- Religion and Life Education

Address : 3, G/F, Tim Ming House, Wah Ming Estate, Fanling, NT.
Tel : 26764010 **Fax :** 26779252
Email : hkeccfc@gmail.com
Contact Person : Mr Wong Chi Yung (Centre In- Charge)

成立年份
Establish Year:
1993

香港宣教會學校服務隊

香港宣教會學校服務隊之前身為「香港宣教會白普理上水家庭中心 — 學校服務部」，由 2000 年開始已為北區及本港各區學校提供各項支援及發展性服務。因應服務的發展及機構的架構重組，由 2007 年 9 月 1 日起，成功申請為獨立註冊服務單位，希望能更專注地及更靈活地為本港中、小學及幼稚園提供多元化的支援及輔助服務。

主要服務

- 全方位小學輔導服務
- 成長的天空計劃
- 校本課後學習及支援計劃（區本計劃）
- 課餘活動小組及支援服務
- 特殊教育支援服務
- 家長教育服務
- 教師培訓及支援活動
- 境內及境外遊學服務
- 駐幼稚園社工服務
- 學生領袖及義工培訓
- 優質教育計劃及其他創新協作計劃

地址：上水清河邨清平樓地下 B 翼及 C 翼
電話：26724771 **傳真：**22422522
電郵：st@hkecss.org
聯絡人：葉建忠先生（助理督導主任）

HKEC School Services Team

Hong Kong Evangelical Church School Services Team is one of the non profit making services unit of Hong Kong Evangelical Church Social Service Limited, formerly known as the “Hong Kong Evangelical Church Bradbury Sheung Shui Family-School Services Department”. In response to the demand, Hong Kong Evangelical Church Yan Lam Church promoted the establishment of an independent service unit, and assume supervisory responsibilities in 2007.

Core Services

- Comprehensive Student Guidance Service
- Understanding Adolescent Project
- School-based After School Learning and Support Programs: Community-based Projects
- After –School Program
- Special Educational Needs Service
- Parenting Education Program
- Teachers Training
- Inbound and Outbound Study Tour Service
- Kindergarten Stationing Guidance Service
- Student Leader and Volunteer Training
- Quality Education Projects and other Pioneers Projects

Address : Wing B & C, G/F, Ching Ping House, Ching Ho Estate, Sheung Shui, NT.
Tel : 26724771 **Fax :** 22422522
Email : st@hkecss.org
Contact Person : Mr Yip Kin Chung (Assistant Supervisor)

成立年份
Establish Year:
2007



香港宣教會恩霖社區服務中心

因關心上水清河邨 — 一個新落成及入伙的公共屋邨 — 的服務需求，遂把原先在彩園邨「白普理上水家庭中心」的兒童及家長服務團隊抽調出來成立此以自盈虧方式營運的中心。

中心計劃以「友善家庭」、「睦鄰社區」為服務方向，提供一站式的資源、支援和發展性服務予區內居民。

主要服務

- 居民網絡及支援服務
- 家庭資源及支援服務
- 家庭生活及親子教育服務
- 生命及靈智教育服務
- 長者資源及支援服務

地址：上水清河邨清平樓地下 B 翼及 C 翼
電話：26724771 **傳真：**22422522
電郵：yl@hkecss.org
聯絡人：葉建忠先生（助理督導主任）

HKEC Yan Lam Community Service Centre

HKEC Yan Lam Community Service Centre was set up at Ching Ho Estate in Sheung Shui in June of 2009 and is managed by HKEC Yan Lam Church. In response to the services demand of the newly-developed public housing estate, our Child and Parent Department of HKEC Bradbury Sheung Shui Family Centre is separated and operated on self-finance bases in the new centre. “Friendly Family” and “Harmonious Community” are the services direction of the centre which is to serve the local community via a one-stop resources, support and development services.

Core Services

- Community Network and Support Service
- Families Resources and Supporting Service
- Family and Parenting Service
- Religious Services and Life Education Activities
- Elderly Service

Address : Wing B & C, G/F, Ching Ping House, Ching Ho Estate, Sheung Shui, NT.
Tel : 26724771 **Fax :** 22422522
Email : yl@hkecss.org
Contact Person : Mr Yip Kin Chung (Assistant Supervisor)

成立年份
Establish Year:
2009

香港宣教會恩全鄰舍中心

由恩全堂承辦及管理，希望能結合教會及中心資源，促進大埔社區的鄰舍關係，建構和諧社區。

中心以「睦鄰社區」及「全人發展」為服務方向，為區內的居民、家長及中小學生提供一站式的支援性和發展性服務。中心的宗旨是『與你一起締造豐盛人生、健康家庭、和諧社區』

主要服務

- 短期食物支援服務
- 長者支援服務
- 家庭支援服務
- 功課輔導服務
- 愛心午膳服務
- 社區轉化服務

地址：大埔大元邨泰怡樓 B 座地下 17-19 室
電話：26669779 **傳真：**21255013
電郵：yantsuencenter@yahoo.com.hk
聯絡人：鄭建偉先生（社區主任）

HKEC Yan Tsuen Neighborhood Center

HKEC Yan Tsuen Neighborhood Center served the residents, parents and primary and secondary students in Hong Kong with one-stop, supportive and developmental services based on the principle of “neighborhood-friendly” and “holistic development”.

Core Services

- Food bank
- Elderly Support Service
- Family Support Service
- After School Care Program
- Lunch Service
- Community Conversion

Address : Rm 17-19, G/F, Tai Yee House, Tai Yuen Estate, Tai Po, NT.
Tel : 26669779 **Fax :** 21255013
Email : yantsuencenter@yahoo.com.hk
Contact Person : Mr Cheng Wai Kin (Community Officer)

成立年份
Establish Year:
2009

香港宣教會恩錫鄰舍中心

香港宣教會恩錫鄰舍中心由恩錫堂承辦及管理，希望能結合教會及中心資源，建構友善家庭及睦鄰社區為目標。中心自2012年至今為碩門邨定期舉辦有益身心的活動，亦因應屋邨人口特色和需要，提供靈活及具彈性的支援和發展服務，減少各類家庭及社區問題的發生。

主要服務

- 功課輔導服務
- 兒童及家長服務
- 個人輔導及轉介服務
- 宗教輔導及生活教育
- 長者服務

地址：沙田石門安群街1號京瑞廣場7樓
J及K室

電話：55779114 傳真：23203320

電郵：zion@hkecss.org

聯絡人：楊蘭琴姑娘（中心總監）

HKEC Zion Neighborhood Centre

HKEC Zion Neighborhood Centre is set up and managed by Zion Church, aimed to integrate the resources of church community centre to develop harmony families and community. From 2012 to now, we have held variety kinds of activities and service at Shek Mun Estate to provide flexible supportive and developmental service in order to reduce family and community problem.

Core Services

- After-School Care Programs
- Children and parent service
- Personal Counseling and Referral Service
- Religion and Life Education
- Elderly service

Address : Unit J and K, 7/F, Kings Wing Plaza 2, No.1 On Kwan Street,
Shek Mun, Shatin, NT.

Tel : 55779114 Fax : 23203320

Email : zion@hkecss.org

Contact Person : Ms Yeung Lan Kam (Centre Director)

成立年份
Establish Year:
2016





香港宣教會社會服務處有限公司
Hong Kong Evangelical Church Social Service Limited

新界上水彩園邨彩麗樓地下29-40號

電話：2670 2995

傳真：2670 8985

網址：www.hkecss.org

電郵：info@hkecss.org

29-40, G/F, Choi Lai House, Choi Yuen Estate, Sheung Shui, NT.

Tel : 2670 2995

Fax : 2670 8985

Website: www.hkecss.org

Email : info@hkecss.org