



# 社區照顧 Community Care

年報  
Annual Report  
2020/2021



香港宣教會社會服務處有限公司  
Hong Kong Evangelical Church Social Service Limited



社聯  
HKCSS

Charity listed on

慈善機構  
Wisegiving



萬事都互相效力，  
叫愛上帝的人得益處。

(羅馬書 8:28)

And we know  
that in all things  
God works for  
the good of those who  
love him,  
who have been  
called according  
to his purpose.

(Romans 8:28)

## 目錄 CONTENTS

背景與宗旨 Background and Mission	1
主席的話 Chairman's Foreword	2-3
各服務單位回顧及展望 Service Review	4-9
服務點滴 Our Services	10-16
各服務單位服務數據摘要 Statistic of Service	17-23
財務概覽 Financial Summary	24
核數報告 Auditor's Report	25-27
董事及管理委員名錄 List of Directors and Management Board Members	28
架構圖 Organization Chart	29
鳴謝 Acknowledgement	30
捐款回條 Donation Form	31
服務單位通訊錄 Our Service Units	32-33



## 背景及宗旨

### Background and Mission

#### 背景

香港宣教會為一基督教宗派，由 1954 年開始在香港石硤尾區內發展福音工作，至今在港建立了二十一間堂會。

香港宣教會除積極傳揚福音和建立教會外，也透過社會服務具體地表達基督對人的愛和關懷；由 50 年代至今，先後興辦了學校、自修室、老人中心、自負盈虧的綜合家庭服務中心及社區中心，以服務社區上有需要人士。

香港宣教會為增強對社區服務之關注和社區大眾的認受性，遂於 1995 年 2 月 28 日向公司註冊署及稅局申請成立非貿易慈善團體「香港宣教會社會服務處有限公司」，並獲法人地位，全面輔助各項社會服務的發展。

#### 宗旨

實踐基督傳揚福音和服務人群的精神，為個人、家庭及社區的需要，提供優質及結合福音的社會服務。

#### BACKGROUND

Hong Kong Evangelical Church (HKEC for short) is a Christian Church. Being engaged in missionary outreach in Shek Kip Mei of Hong Kong since 1954, it has established up to 21 local churches in Hong Kong.

In addition to Missionary Outreach and establishing local churches, HKEC expresses Christ's love and care of humankind through Social Services. Since the 1950s, it has established schools, study centers, elderly centers and self-financed integrated family centers to serve the people in need in the communities.

In order to emphasize the community care and enhance the recognition of its social services, on 28 Feb 1995, Hong Kong Evangelical Church Social Service Limited (HKECSS for short) was incorporated under the Companies Ordinance and was granted tax exemption under Section 88 of the Inland Revenue Ordinance as a charitable organization. HKECSS is a corporate body that exists for the purpose of developing various Social Services.

#### MISSION

To follow Jesus Christ's examples to preach the Gospel and to serve people by providing social services of high quality and combine the Gospel for the needs of individuals, families and communities.



他回答說：  
你要盡心、盡性、  
盡力、盡意愛主—  
你的神；  
又要愛鄰舍如同自己。

(路加福音 10:27)

He answered,  
"Love the Lord your God with  
all your heart and  
with all your soul and  
with all your strength and  
with all your mind and,  
"Love your neighbor  
as yourself."

(Luke 10:27)

## 主席的話

### 疫路同行 - 點滴在心頭

新冠病毒自 2019 年底爆發，來勢洶洶，瞬間波及全國，全港人人自危。雖然疫情兇險，但香港宣教會社會服務處各中心，仍堅持關心及服務有需要人士。其時，市民「瘋」擁搶購防疫用品，普羅大眾落在「一罩難求」，匍匐而行的困境中。感恩在物資嚴重短缺之際，我們仍間歇地收到善心人士或慈善團體送贈相關物品。以致大半年來，我們能陸陸續續向有需要的人派發合用物資。我們也曾與不同機構合作，進行社區關懷行動，諸如送出抗疫福袋。

念到有許多年長或行動不便的人士，我們多次召集同事及義工，協助上門派送服務，並藉此為他們打氣，送上祝福。此舉得到不少義工參與支持，眼見各中心於此疫難之秋，能同心同德、身體力行、表彰主愛；心中對慈仁的父上帝，實在有說不出的讚頌和感恩！

第二輪疫情爆發之時，民生受到更大影響。不少基層人士被迫放無薪假期，或削減工時工資、全職轉兼職……家計更頓入困境。因此，我們參與了各項計劃。數月內，多次向有需要人士派發食肆現金，藉此關顧社區需要，與居民彼此扶持，共渡時艱。於疫境當中，為上主之名，在人間散發點點愛和光。

受惠人士又形容物資如同及時雨，紛紛表達謝意！部分人士還願意傾訴在疫情中的艱辛，坦白地分享他們正在面對的困擾，特別是與家人之間的磨擦及種種擔憂。能夠聆聽心靈困惑愁苦者身心的需要，適時回以鼓舞；為他們帶來安慰與盼望；實在讓我們看見香港宣教會社會服務處各中心的存在，並不徒然，饒有價值！

### 憑信仰望 - 疫會見藍天

新冠病毒席捲全球，一波接一波，此起彼落，經濟脈搏近乎止息。各國埋首研發疫苗，苦無良策對應。全球死患無數，人心惶恐終日，叫人真實體悟人的卑微和有限。然而感謝 神！祂是那在洪水氾濫之時，仍然坐着為王，直到永遠的創造主上帝。雖然在世上，我們有苦難，但主耶穌已經勝了世界，並且把平安留給屬祂的人。我們有這寶貴的應許，還需懼泰山崩於前嗎？我們慶幸在疫情路上，一直與有需要人士同行，不單送上物資，更成為他們的心靈支援，猶如及時甘露。

環顧目下，雖仍是困難重重；但憑着信，我們不會逃避，仍要堅守崗位，謀求更適切的服侍；並要努力與人群建立情誼，為他們在這不安的時勢中，帶來心靈的溫暖，重尋生機，共覓出路！

疫情雖未過，但我深信雲上太陽，從未離開，總有再現藍天之日。惟求慈憐的上主，在這暫時晦暗不明的疫路上，繼續施恩拖帶，使我們各中心的同事齊心協力，繼往開來，朝着更遠大的方向，關愛社區。

香港宣教會社會服務處有限公司董事局主席  
楊蘭琴牧師





# Chairman's Foreword

## Walking Through the Pandemic Together Since 2019

An outbreak of a new strain of coronavirus occurred in 2019, since then, it has affected the whole country and world; every one of us feels scared and insecure of what the future holds for us all. Hong Kong Evangelical Church Social Service Limited (HKEC) has never stopped taking care of others and providing services to those in need during the outbreak. Since the beginning of the pandemic, citizen scrambled to stock up on protective gear amid fears of a PPE shortage. We are greatly indebted to all the charitable associations for donating PPE supplies. With their help, we could distribute the supplies to those in need, for over half a year. We also connected with different associations in the community as a support network to pull together resources and distribute anti-epidemic goody bags to help the needy.

Our colleagues and volunteers deliver services and send blessing to the elderly and those with mobility impairments. The spirit of all was wonderful and the dedication service was an essential yet joyous occasion. We walk in unity for which we praise the Lord.

During the second wave of the outbreak, working lives of many people from grassroot families were disrupted. They were forced to take unpaid leave, to accept salary cuts or to shift to part-time job. We distributed food coupons to those who were affected for several months. God longs for us to give ourselves fully to the community around us, we transformed the power of God's grace in our lives to serve other.

People were immensely grateful for all the support received; some of them shared stories of their difficulties and hardship, especially of frictions in the family as a result of the financial strains. It is humbling to have a chance to listen to and fully understand their problems and needs, and where possible to provide much needed support. HKEC is committed to building a compassionate Hong Kong through uniting people with the same spirit to extend the Kingdom of God, our vision of unity is materialized.

## Believe by Faith, A Path to a Bright Future

The pandemic continues to wreak havoc around the world and has changed the world economy. Aside from the financial implications it has affected millions of peoples personal health, who are either very ill or worse, those who have succumbed to the disease. Every country aims to accelerate the development and manufacture process of the COVID-19 vaccines, but no solution had been found until now. In our weaknesses, people will see that there is nothing we can humanly do, but it is God working through us. The LORD sitteth upon the flood; yea, the LORD sitteth King for ever. Throughout the world, we encountered difficulties, but thanks to God, he will overcome the world. This is the victory that has overcome the world, even our faith; in God, we have peace. We are extremely grateful for the support received during the bad times, by means of materials support and soul support.

Tough times might stick around for a while, but we believe tough people will also. We are emphatically sticking to our position to build up a closer relationship with all, to provide an environment of warmth to one another and to seek a way forward.

Despite the pandemic persisting, I believe high above the rain, the sun stays the same; the weather will be beautiful again. We ask God to lead the way and guide our path in the dark. We pull together, move in a forward direction and to engage ourselves in community services.

Rev. Yeung Lan Kam  
Chairman of Board of Directors  
Hong Kong Evangelical Church Social Service Limited





## 各服務單位回顧及展望 Service Review

### 香港宣教會大興長者鄰舍中心 (1982)

是香港宣教會首間老人福利服務單位。中心秉承基督的愛，為屯門區長者提供多元化之服務，鼓勵長者享受豐盛之晚年，同時為個人、家庭之需要，提供靈性、生理、心理社群上的支援和發展服務。服務對象為年滿 60 歲或以上之長者。

在這一年疫情仍未結束的時間，大家都謹慎地面對著，面對因疫情帶來的不明朗因素，打破了長者平常的生活節奏，帶來了不少精神及情緒上的需要。因應口罩供應的不足及防疫物資的短缺，中心紛紛為長者送上口罩和防疫物品，以解他們暫時的急切性。同時亦為長者製作布口罩，讓他們有需要時使用。在中心未全面開放的時候，職員致電每一位長者，了解他們在疫情中的生活，了解並關心他們的健康狀況，需要時提供支援及其他的服務。讓長者知道社區關心他們的同時，大家共同去面對。

期望在不久的日子，大家都能夠可以恢復正常的生活，長者可以安心地來中心參加活動，在中心觀看電視，參加喜歡的興趣班，與老友記一同去旅行……在中心內參與不同的活動。中心可以再次熱鬧起來，讓我們看到每一位長者展露歡顏。疫情中長者對科技知識增加了不少，學習及使用較從前頻密，亦依賴它們與親友溝通。期望在往後的日子，中心會多舉辦此類活動及學習，讓長者在科技上有更多掌握。

### HKEC Tai Hing Neighbourhood Elderly Centre (1982)

The Elderly Centre is the first unit dedicated to providing services to the elderly. The centre echoes God's appeal to serve the elderly in Tuen Mun, by offering them multiple services and encouraging them to live their lives the fullest. The centre also offers social, emotional and physical support to all those aged 60 and above.

The COVID-19 pandemic has had huge effects on the daily lives of the elderly, it also creates heavy psychological and emotional burdens for them. Several centres reported an increase of cases where the elderly needed emotional support.

Before the centre opened, we called every elderly visitor to understand their needs and to check on the status of their health. We are ready to provide assistance and services if and when needed. We are here to let them know WE CARE.

Hopefully we will be living a more normal life very soon. The elderly can continue to participate in different activities, ranging from enjoying a movie with friends to attending classes in the centre without worries. We look forward to seeing the warm and sweet smiles on their faces. As a result of the pandemic the elderly have had little choice but to become tech-savvy, most of them are learning how to use technological devices in order to stay connected to their family and friends. Our centre is preparing to organize more classes to teach the elderly to master tech skill.

神愛我們的心，  
我們也知道也信。  
神就是愛；

住在愛裡面的，  
就是住在神裡面，  
神也住在他裡面。

(約翰一書 4:16)

And so we know  
and rely on the love  
God has for us.  
God is love.  
Whoever lives in  
love lives in God,  
and God in him.

(1 John 4:16)





### 香港宣教會白普理上水家庭中心 (1991)

為香港宣教會首間以自負盈虧方式運作的綜合家庭服務中心。以多元化的方式，為區內家庭及有需要人士提供支援及發展性質的服務；服務對象遍及兒童、青少年、家長、在職人士及長者。

疫情期間，大家面對在防疫用品（口罩、消毒液等）的大量需求外，在面對超過一年多的抗疫日子，大家的身心靈也要學習適應這新常态的生活狀況。

本中心於本年度分別得到太古基金 (SWIRE TRUST)-See You Online 及香港公益金資助，推出兩項計劃，名為「童抗逆」家庭支援計劃。計劃內容包括有：「網上問・網上學」功課輔導服務、假期趣味學習資源套、多元線上工作坊，及「家心思正向為本家庭精神健康計劃」-透過不同的元素展開，包括：網上小組、工作坊、講座、手工材料包、一對一、一對三的音樂治療或遊戲治療面授小組。主要服務的對象為幼兒、學童及其家長。

疫情期間、初期學校停課、小學生中後期以網上授課，而幼兒則繼續停課，故中心以上述不同形式小組及網上活動，以舒緩幼兒、學童及家長長時間鬱悶在家的情緒。

### HKEC Bradbury Sheung Shui Family Centre (1991)

The centre is the first self-funding centre providing integrated services to families. The centre is devoted to providing multiple services to kids, teenagers, parents, working adults and the elderly. Services included assistance and resources for self-development.

Due to the rampant coronavirus pandemic, face masks and anti-epidemic supplies are in acute shortage. Over a year after COVID-19 pandemic has emerged, every one of us have suddenly been forced to adapt to the new normal. The centre received sponsorship from the Swire Trust - See You Online and the Community Chest to introduce two projects to drive positive and long lasting change in the community. The project aims to provide homework guidance, learning resources during the holidays and online workshops. Another program is targeted towards infants, kids and parents, it provided them with online activities, workshops, seminars, courses of handcraft, one-on-one and group music and game therapy.

Face-to-face classes at schools were suspended due to the pandemic; online learning has been adopted by primary school students at the later stage with kindergarten still closed. The centre incorporated more online activities in a bid to release negative emotion.

### 香港宣教會粉嶺家庭中心 (1993)

為本會第三所社會服務中心。同樣以自負盈虧模式，為區內家庭提供綜合性服務。

粉嶺家庭中心本著耶穌基督愛世人的精神及回應區內居民的需要，提供家庭服務，以促進家庭和諧及功能並個人之福祉，令居民藉此得享豐盛生命。中心期望透過家庭支援服務幫助有困難的家庭解決問題；促進家庭成員的和諧關係；發掘家庭成員的潛能貢獻社會；協助家長解決照顧子女的需要。

服務內容包括學童及家長服務、家庭活動及資源服務、社區教育服務、義工發展及培育服務等。

本年度大型服務計劃 / 活動包括：

- |                  |                  |           |
|------------------|------------------|-----------|
| 1. 老有所為          | 4. 茶餐「聽」(長者小組)   | 7. 抗疫心意行動 |
| 2. 「強化家庭功能」動力加添愛 | 5. 傾出彩虹動力網(婦女小組) | 8. 街頭心意行動 |
| 3. 2020 愛心券      | 6. 心靈關懷工作坊       | 9. 食物捐贈行動 |

### HKEC Fanling Family Centre (1993)

HKEC Fanling Family Centre, the third social service centre of HKEC and also self financed, provide integrated services to all families in the community.

In line with the spirit of Jesus Christ loving the world and responding to the needs of residents in the community, the centre provides family services to promote family harmony and personal well-being, so that residents can enjoy an abundant life. The centre hopes to help families in difficulties solve problems through family support services; promote harmonious relationships between family members; explore the potential of family members to contribute to society; and assist parents in solving their children's needs. Services included school children and parent services, family activates and resource services, community education services, volunteer development and nurturing services, etc.

This year, we held a wide array of large-scale activities:

- |   |                               |
|---|-------------------------------|
| 1. Promoting a Sense of Worthiness among the Elders | 6. Spiritual Support Workshop |
| 2. Family Empowerment                               | 7. Anti-epidemic Measures     |
| 3. 2020 Charity Ticket Campaign                     | 8. Street Fundraising         |
| 4. Communicating with Seniors (Elderly Group)       | 9. Food Donation Activity     |
| 5. Women's Networking Group (Women's Social Group)  |                               |





又願主叫你們彼此相愛的心，並愛眾人的心都能增長、充足，如同我們愛你們一樣；

(帖撒羅尼迦前書 3:12)

May the Lord make your love increase and overflow for each other and for everyone else, just as ours does for you.

(1 Thessalonians 3:12)



### 香港宣教會白普理上水家庭中心綜合家庭照顧服務隊 (1994)

在新型冠狀病毒疫情下，中心的家居照顧服務仍舊堅守服務崗位，關心我們的服務使用者及了解他們的需要。不間斷地提供膳食、護送、購物、護理、個人照顧及藥物管理等服務，照顧各人的需要，並尋找可以協助他們的方法，與服務使用者們一起共渡時艱。

得悉在疫情嚴峻時期，不少長者忌憚出門，除了口罩不足怕受感染，也避免其家人擔心。部份長者對各種服務的需求增加了，比方送飯和清潔服務；同時亦有些長者，為防疫而將自己孤立，選擇一直待在家，謝絕探訪及不願接觸人。為此，我們亦安排了同工每日致電給長者，了解他們的需要及盡量用不同方法疏導他們的情緒。

與此同時我們不定時上門派發物資和防疫用品。本中心得到相當多的熱心機構和善心人士捐贈不同防疫物資予社區有需要人士，對此，本中心十分感謝他們的貢獻和支援。

推動「社區照顧」概念：為長者提供合適的支援，教導長者及護老者掌握自我照顧技巧，提昇生活質素，重享豐富的家庭和社交生活，讓他們能在熟悉的社區健康地生活。對於體弱長者，我們希望更完善安心居家安老，除了提供已有的支援和長期照顧服務，期盼可搭建鄰舍關懷網絡，以鼓勵鄰居可暫時協助看顧的需要。

善用科技照顧長者：疫情下加速了科技應用的步伐，不單單在服務長者的層面上，更可擴展至長者的日常生活中。教授長者如何使用手機／平板電腦，讓他們可接觸電腦遊戲及網站，更可放大畫面閱讀報紙，就算足不出戶都能享受各種娛樂活動。

### HKEC Bradbury Sheung Shui Family Centre Integrated Home Care Services Team (1994)

During the Covid-19, we stick to our duties in the best interest of our users. We provide dining, escort, shopping, nursing, personal care and medical services to all those in need. We seek ways to ride out the storms with them.

In view of the shortage of face mask, the elderly is fear of going out as they have a higher risk of contracting COVID-19 disease. It has significantly increased their need for social care, especially of dining and cleaning services. Some of them lived through fear, isolated themselves and chose to stay at home and were reluctant to meet other people. Our colleagues called them to understand their needs and soothe their emotions.

With the support from major charitable organizations and parties, we received anti-epidemic supplies in donations and our colleague was tasked to distribute those materials to members of the public in need. We expressed our heartfelt appreciation to them.

To promote community care: The objective of the centre services are to provide appropriate support services for the elders and to build up a caring community for them; teach them to self-care; elevate their standard of living; enjoy family and social life and encourage healthy living in community.

For those who are physically weak, on top of long-term care services, we wish to provide community support services for them at neighbourhood levels. Neighbourhood collaborated together and formed strategic alliance with other stakeholders to provide caring services and build up a caring community for them.

Turn to technology to improve elderly care: The pandemic has accelerated digital transformation and fundamentally changed the way we serve the elderly and the life they live. We allocated more resources to improve digital literacy in the elderly: we taught them how to use mobile and tablet so that they can access websites, play computer games, read newspaper and entertain themselves at home.





## 香港宣教會學校服務隊 (2007)

香港宣教會學校服務隊之前身為「香港宣教會白普理上水家庭中心 - 學校服務部」，由 2000 年開始已為北區及本港各區學校提供各項支援及發展性服務。因應服務的發展及機構的架構重組，由 2007 年 9 月 1 日起，成功申請為獨立單位註冊服務單位，希望能更專注地及更靈活地為本港中、小學及幼稚園提供多元化的支援及輔助服務。

2020-2021 具體活動有：

1. 全方位學生輔導服務（駐校社工）
2. 駐校社工諮詢及督導服務
3. 成長的天空（按學年）
4. 校本課後學習及支援學習計劃
5. 家長及學生成長

## HKEC School Services Team (2007)

Hong Kong Evangelical Church School (Former Hong Kong Evangelical Church Bradbury Sheung Shi Family Centre) provides services and support to schools in Hong Kong especially of North district. The team was successfully registered as an independent services provider on Sept 1, 2007 as a result of development and restructuring. The teams is endeavor to provide multiple services to all secondary schools, primary schools and kindergartens in Hong Kong in a more flexible way.

2020-2021 Activities:

1. Comprehensive Student Guidance Service (School Social Worker)
2. School social worker services (Enquiries and Guidance)
3. Understand Adolescent Project (By year)
4. School-based After-school Learning and Support Programmes
5. Parental and Student Development

## 香港宣教會恩霖社區服務中心 (2009)

因關心上水清河 - 一個新落成及入伙的公共屋邨的服務需求，遂把原先在彩園邨「白普理上水家庭中心」的兒童及家長服務團隊抽調出來，成立以自付盈虧方式營運的中心。中心計劃以「友善家庭」，「睦鄰社區」服務方向，提供一站式的資源、支援和發展性服務予區內居民。

疫情期間，中心急居民之所急，推動不同的抗疫項目，包括徵集口罩，再派發予社區有需要人士 - 低收入家庭、長者、清潔工人等；又成為公益金及時抗疫基金的批核中心之一，為受疫情影響收入的人士提供經濟支援。此外，中心亦積極開拓新的服務模式，例如推行特殊教育需要家居訓練計劃、網上特殊教育需要訓練小組、一對一功課輔導、網上興趣小組、網上墟市活動、視像關顧等等，讓居民於疫情的限制中仍能獲得所需服務。

疫情為所有人的生活模式都帶來巨大轉變，大家意識到能見面並非必然，但同時亦更熟悉利用科技去突破各樣的限制，並深深體會人與人之間互助互愛的美好。未來的日子，我們將與時並進，繼續了解社區上不同的人士的需要，動用資源去提昇不同群體的生活質素，同時積極推動社區互助，鼓勵不同的持份者運用自己的能力、經驗和資源，作出貢獻，共同參與建設一個屬於「每一個你」的社區。

## HKEC Yan Lam Community Service Centre (2009)

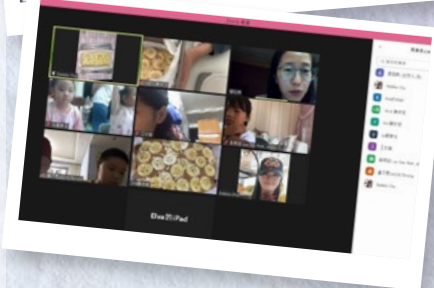
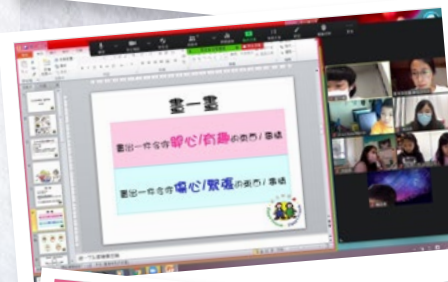
In response to the services demand of Ching Ho Estate in Sheung Shui, a newly-developing public housing estate, the child and parent development of Bradbury Sheung Shui Family Centre is separated and operate in self-finance bases in the new center. The centre believes in motto 'Friendly family' and 'Harmonious community' as the guiding principle in the development of the centre. It provides residents with comprehensive resources, services and support.

During the COVID-19, the centre launched different anti-epidemic programme, including face mask collection and distribution to low-income family, the elderly and cleaners. The centre becomes one of the assessing centres of Community Chest Rainbow Fund, providing financial support to those whose salary has been affected by the pandemic.

Moreover, the Centre explored new service delivery model, such as special educational needs, home-based training project, special educational needs online training course, one to one homework tutoring learning support, online interest classes, online bazaars and virtual care; all services were available for residents during the pandemic.

The COVID-19 pandemic has affected peoples' daily lifestyle and it has profoundly disrupted some social circles; technology helps mitigate the impact. We treasure every opportunity to meet others.

In the upcoming days, we will not stop understanding peoples' need and utilizing resources to elevate lifestyle. We strive to foster community care and encourage different stakeholders to share experiences, resources and best practices in building a thriving community for every one of us.



我實在告訴你們，  
這些事你們既作在  
我這弟兄中一個  
最小的身上，就是  
作在我身上了。

(馬太福音 25:40)

Truly I tell you,  
whatever you did for  
one of the least of  
these brothers and  
sisters of mine,  
you did for me.

(Matthew 25:40)





### 香港宣教會恩全鄰舍中心 (2009)

由恩全堂承辦及管理，希望能結合教會及中心資源，促進大埔社區的鄰舍關係，建構和諧社區。中心以「睦鄰社區」及「全人發展」服務方向，區內的居民、家長及中小學生提供一站式的支援性和發展性服務。中心的宗旨是「與你一起締造豐盛人生、健康家庭、和諧社區」。

今年中心服務有：

1. 援助低收入及貧困家庭，開展「愛心糧倉－短期食物支援服務」
2. 從身、心、靈關愛長者，推展「中銀基金長者健康樂無窮－長者支援服務」



### HKEC Yan Tsuen Neighbourhood Centre (2009)

Undertook and managed by Zion Church, the centre aims to integrate resources from the Church and the Centre to foster neighboring relationship and build a harmonious community. The Centre takes 'Good neighborhood community' and 'holistic development' as its service direction, to provide one-stop supportive and developmental services for residents, parents and primary school students. The mission of the Centre is 'to create a full and prosperous life, a healthy family and a harmonious community together'.

Services:

1. Provide support to low-income and family living in poverty by launching 'Love granary' of short-term food assistance services
2. To help the elderly stays active in mind, body and spirit by launching elderly support services sponsored by BOCHK Charitable Foundation



### 香港宣教會恩錫鄰舍中心 (2016)

恩錫鄰舍中心由恩錫堂承辦及管理，希望能結合教會及中心資源，以建構友善家庭及睦鄰社區為目標。中心自 2012 年至今為碩門邨定期舉辦有益身心的活動，亦因應屋邨人口特色和需要，提供靈活及具彈性的支援和發展服務，達至減少各類家庭及社區問題的發生。

今年中心服務有：

1. 2020 新型冠狀病毒社區關懷行動：上門派發抗疫福袋
2. 2020 基層生活互助計劃
3. 2020 中秋節網上親子活動
4. 2020/21 恩錫共享活動 - 文具、圖書、家品
5. 2021 新春送暖行動
6. 2021 恩錫與碩門共享－抗疫福袋



### HKEC Zion Neighbourhood Centre (2016)

Hong Kong Evangelical Church Zion Neighbourhood Centre was set up and managed by Zion Church. It aims at integrating resources of church community centre to develop harmony families and community. From 2012 to now, the Centre has held various kind of activity and provided flexible services for citizens in Shek Mun Estate, with an aim to reduce problems generally in family and community.

Services:

1. 2020 Delivering services during the pandemic: Anti-epidemic goody bags were distributed door-to-door to households
2. 2020 Grassroots Life Mutual Assistance Plan
3. 2020 Online Parent-Child Activities during Mid-Autumn Festival
4. 2020/21 Resources Sharing - Stationery, Books, Household Supplies
5. 2021 Spreading love during Chinese New Year
6. 2021 Distribution of Anti-epidemic Goody Bags





### 香港宣教會恩田鄰舍服務中心 (2018)

今年中心服務有：

1. 派發防疫福袋予長者及清潔工人
2. 邀請會員上中心領取防疫物資
3. 與鄰舍輔導會合辦防衰老運動

未來展望：

1. 短期內都會繼續向街坊派發防疫物資、福音單張、心意慰問咭
2. 準備舉辦爵士舞蹈班，現正與導師開會商討活動安排
3. 白田邨陸續新居入伙，委員會現正商討研究提供一些適切的服務予街坊，如小學生托管等

### HKEC Yan Tin Neighbourhood Service Centre (2018)

Services:

1. Distribution of Anti-epidemic goody bags to the elderly and cleaners
2. Invited members to visit the centre to get anti-epidemic supplies
3. Organized anti-ageing exercise with the Neighbourhood Advice-Action Council

Vision:

1. Distribution of anti-epidemic supplies, gospel tracts and blessing cards to residents
2. Start the preparation work for Jazz dance class
3. Residents continue to move in Park Tin Estate, Committee hold hearings on services essential to residents including After school care programme for primary school students

### 香港宣教會恩磐愛鄰舍中心 (2020)

香港宣教會恩磐愛鄰舍中心成立於 2020 年 8 月 27 日，是香港宣教會社會服務處有限公司轄下服務單位，由恩磐堂開辦主理。香港宣教會恩磐愛鄰舍中心以「施比受更為有福，愛鄰舍即是愛基督」為使命，本著基督的愛服務有需要之人士和支援有需要的家庭，「愛鄰如己，區內一家」以關懷、尊重，以人為本、助人自助提供適切服務，致力支持及促進家庭功能。創造一個可供人們成長及改進的環境，使生命得以轉化，活出有價值和意義的人生，並致力建立愛與關懷的社會。

本著「以人為本，全人關顧」的服務格言，提供兒童、青少年、成人、長者、家庭及綜合服務，亦涵蓋輔導、培訓及顧問服務。如需要也包括短期食物援助、社會關懷等服務，冀能助弱扶貧、助人自助，全面關顧有需要者身、心、社、靈的成長。

今年中心服務有：

1. 派月餅 + 防疫用品
2. 「點點心意」現金券及飯券
3. 食物銀行：「惜食共享計劃」
4. 派發賀年揮春及防疫用品
5. 派發食物和防疫口罩
6. 輔導服務及探訪

### Grace Neighborhood Loving Centre (2020)

Managed by HKEC Ltd. and manned by Grace Hong Kong, Grace Neighborhood Loving Centre was established on Aug 27, 2020. The centre executes its mission 'More blessed to give than to receive, love your neighbor as love the Lord'. With Christian love, we strive to provide quality services to the needy and personalized support to families. The Bible says we are to love our neighbours as we love ourselves, we care and respect others. We are devoted to promoting family functioning to enable them to a healthy and meaningful life.

Adhering to the 'people-oriented' and 'holistic care' philosophy, we are dedicated to providing a wide spectrum of counselling, training and consultancy services to children, teenagers, adults, elderly and families. We also provide short-term food assistance and strive for creating a caring, inclusive and loving society for the needy in the community.

Services included:

1. Mooncakes and Anti-epidemic Supplies Distribution
2. Cash and Dining Coupons Distribution
3. Food Bank: 'Food Assistance Project'
4. Fai Chun and Anti-epidemic Supplies Distribution
5. Food and Face masks Distribution
6. Counselling Services and Elderly Visit





## 服務點滴 Our Services

### 香港宣教會大興長者鄰舍中心

#### 誰照顧「照顧者」？

社會福利署於2019年10月增撥資源，讓長者鄰舍中心增設「需支援護老者」服務，旨在支援照顧者在家中照顧體弱長者。中心提供的支援服務不止於照顧技巧訓練，更考慮到照顧者的實際需要，如安排送餐、代購、家居清潔等家居服務；護送覆診、短暫看顧等護理服務；各類型的康樂活動及興趣小組，如和諧粉彩班、香薰按摩等；以及透過通訊軟件發放社區資訊等。透過不同的支援服務，希望能讓照顧者得到喘息的機會，在繁忙的生活裡得到協助，以騰出時間享受ME TIME（私人專屬時間），舒緩生活壓力。

### HKEC Tai Hing Neighbourhood Eldery Centre

#### Who Care the Carers?

The Social Welfare Department has increase the provision of resources to enhance services provided to elderly carers. The Centre provides various supportive services to carers not limited to training course on care of the elderly, but also identifies their primary needs. The center provides various support services including meal delivery, shopping and household chores. The centre also arranges trainees to temporarily stand in for the carers of elders, organized interest class and recreational activities like Pastel Nagomi Art courses and aromatherapy massage. Carers can take a break through the centre; all services help release their caring stress, enhance their quality of life and build a mutual support network.

### 香港宣教會白普理上水家庭中心

#### 家心思正向為本家庭精神健康計劃

香港公益金資助的家心思正向為本家庭精神健康計劃，計劃目標是增加家長對「正向管教」的認識和實踐，緩和在教養子女方面帶來的壓力；明白家長精神健康與子女精神健康的關係；提昇家庭對精神健康的關注（發展性），增加家長在輔助子女面對「升小」或「升中」適應的技巧和心理預備；掌握舒緩個人情緒和減壓的技巧；提昇家長的效能感，促進建立健康的親子關係（預防性），增加學童在「升小」或「升中」方面的適應能力；掌握舒緩個人情緒和減壓的技巧，緩減因學習階段轉變和青春期中所帶來的壓力（預防性），釋放因「升小」或「升中」而受情緒困擾的學童之精神壓力，促進家長成為正面的支持者，改善學童的精神健康（補救性），舒緩因子女「升小」或「升中」而受情緒困擾的家長之精神壓力，掌握和實踐期望管理技巧，並建立互助網絡；改善家長的精神健康（補救性）。

服務對象是4-6歲幼兒及其家長、升讀或正就讀小一的學童及其家長、小五／六的學童及其家長。

服務內容：「繪本x正向管教」的親子歷險項目、正向管教家庭劇團、講座、學生小組、家長同行小組、一對一遊戲治療個案服務、一對一音樂治療。

### HKEC Bradbury Sheung Shui Family Centre

#### Strength Based Family Mental Health Project

Sponsored by The Community Chest, the project aims to enhance parents understanding of 'positive parenting', strengthen their practice, reduce parenting stress and explain to them how the mental health of parents can impact on a child's wellbeing, so as to turn their focus on mental health.

The project targets to serve students under transition stages from kindergarten to primary schools and from primary to secondary schools, and their parents by equipping them with essential skills to assist their children in adaptation, enhance the adaptability of children under transition and establish healthy parent-child relationships; relieving the children's and parents' emotional and mental stress caused by transition by therapeutic intervention.

Target Group: 4-6-year-old children and parents, Pre-primary and primary 1 students and parents, Secondary 5-6 students and parents

Services: Parent-child adventure, positive parenting programme, seminars, student group, one-on-one therapy



## 香港宣教會粉嶺家庭中心

### 1. 抗疫行動

香港受新冠肺炎疫情衝擊，疫情橫跨整個年度。中心繼續在社區發起抗疫物資轉贈計劃，並獲不少熱心組織和人士響應捐贈，為區內有需要人士，例如長者、基層家庭等送上所需物資，給予關懷和支持。

### 2. 「好·融·義」計劃

計劃由社會福利署「老有所為活動計劃」撥款計劃，為期兩年。本計劃以義工服務貫穿，鼓勵長者活到老、學到老，並與不同年齡人士交流，開展豐盛的晚年。計劃有 3 個服務範疇：

「好」：強化長者身、心、靈健康，學習及發展不同才能。

「融」：以長者的經驗和專長，與不同年齡的層的人士交流，達至跨代共融。

「義」：發揮潛能和才幹，實踐義務工作精神，貢獻社區。

## HKEC Fanling Family Centre

### 1. Anti-epidemic Activity

It's been about a year since an outbreak of a new strain of coronavirus was first reported. The Centre spearheaded various support programmes with different organizations in various phases and solicited donations from benefactors in different sectors, offering aid, assistance and support to the communities in distress including the elderly and grass-root families.

### 2. 'Good, Fit in, Meaningful' Project

The 2-year project was sponsored by 'Opportunities for the Elderly Project' from the Social Welfare Department and supported by volunteers. It aims to turn the elderly into lifelong learners and encourage them network with people of all ages and enjoy life to the full. Services are classified into three broad categories:

'Good': Strengthen physical and mental health of the elderly, Develop their talents and skills.

'Fit in': Share their own experience and strength with people of all ages.

'Meaningful': Realize potential and capability, manifest volunteerism contribute to the community

我凡事給你們作  
榜樣、叫你們知道、  
應當這樣勞苦、  
扶助軟弱的人、  
又當記念  
主耶穌的話、說、  
施比受更為有福。  
(使徒行傳 20 章 35 節)

In everything I did,  
I showed you that  
by this kind of  
hard work we must  
help the weak,  
remembering the words  
the Lord Jesus  
himself said:  
"It is more blessed  
to give than to receive."  
(Acts 20:35)



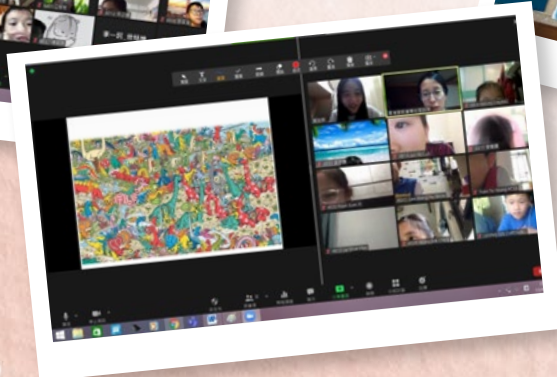
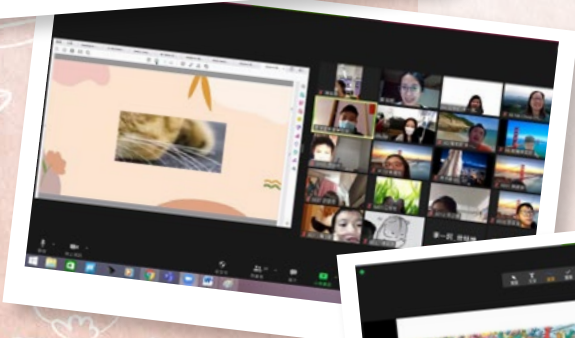


我的神必照他  
榮耀的豐富，  
在基督耶穌裡，  
使你們一切  
所需用的都充足。

(腓立比書 4:19)

And my God will meet  
all your needs  
according to  
his glorious riches in  
Christ Jesus.

(Philippians 4:19)



## 香港宣教會白普理上水家庭中心綜合家庭照顧服務隊

### 言語治療服務

經專業社工評估後，註冊言語治療師便會上門評估，了解長者的進食、溝通及口部肌肉能力，為長者設計個別的口肌及吞嚥訓練計劃及幫助其使用適當的輔助溝通工具，並由照顧員按治療師制訂的訓練內容，到戶協助長者進行言語訓練。再者，制定訓練口肌訓練內容，更不斷跟進長者全面的服務需要。長者言語訓練可協助改善溝通及吞嚥問題，重新建立已喪失的能力或強化現有的能力，達致其最佳溝通表現及有助減低吞嚥困難對其造成的影響。

## HKEC Bradbury Sheung Shui Family Centre Integrated Home Care Services Team

### Speech Therapy Services

Accredited speech therapist will make a home visit to the elderly following a referral from professional social workers. Therapist examines the elderly eating habit and communication skills on a regular basis, providing consultation and intervention to them with communication and swallowing problems. Through various modalities of training and necessary tools, elderly daily functioning in terms of communication and feeding can be maximized.

## 香港宣教會學校服務隊

### 成長的天空計劃

「成長的天空」網上小組展開，無論對於學生及同工都是新嘗試及新學習。學生積極及投入參與，盡力完成不同的活動：

1. 透過具挑戰的活動項目，增加學生互相溝通的機會，同時亦強化他們解決問題的能力，最終希望達到提升抗逆力的目標。
2. 外出參觀「火車博物館」，學生都十分享受及樂而忘返。
3. 在校舉行「親子活動」，由父母及子女一同創作的相架十分精美，過程中觀察到親子間有良好的溝通及溫馨的場面。

## HKEC School Services Team

### Understanding Adolescent Project (Primary)

Both students and teachers are excited about the 'Understanding Adolescent Project (Primary).' Students immersed themselves in completing different kinds of activities.

1. Challenging activities improve communication between students, enhance their problem solving skills and strengthen their resilience
2. Students enjoyed the trip to a train museum
3. Parent-child activities at school: Parents and child created a unique photo frame together, it was definitely a warm moment



## 香港宣教會恩霖社區服務中心

### 「童喜步」特殊教育需要社區支援服務

在疫情期間，很多有特殊教育需要的兒童被迫暫停接受訓練，令發展及學習表現倒退，亦大大增加了家長在照顧子女上的壓力。而「童喜步」特殊教育需要社區支援服務成功獲得容祖兒慈善基金、顧積善堂 Covid-19 疫境送關懷計劃及滙豐香港社區夥伴計劃的資助，為受停課、停實體訓練影響的特殊教育需要學童及其家庭提供協助，包括免費派發暑期趣味學習資源套、舉辦升小一適應 Zoom 課程、專科補習及功課輔導服務、製作及派發家居訓練課程教材套等，為有特殊教育需要的兒童及其家長提供訓練及協助，促進兒童的身心健康及發展，同時提昇家長的效能感和對社區的歸屬感，以減輕在照顧上的壓力。

## HKEC Yan Lam Community Service Centre

### 'Joyful Kids, Hopeful Step' Special Educational Needs Community Support Services

Training for students with special education needs was suspended due to the pandemic, which greatly affected their learning performance; parents experience additional strain resulting from extra childcare responsibilities. Joey Yung Charitable Foundation, Koo Foundation COVID-19 Special Needs Care Fund and the HSBC Hong Kong Community Partnership Programme joined hand to launch a project called 'Joyful Kids, Hopeful Step' Special Educational Needs Community Support Services to provide immediate relief to the needy families with SEN children who could not return to school because of Coronavirus pandemic. The centre distributed summer school learning kits to the children, organized online course for pre-primary students, homework tutorial classes, created and distributed at-home learning kits to families to assist in the delivery of education resources in the time of public health crisis. These all promote healthy child development and manage parenting stress.

## 香港宣教會恩全鄰舍中心

### 中銀基金長者健康樂無窮－長者支援服務

為獨居及兩老長者提供社區為本的服務，藉著多元化的服務介入，包括生命教育小組活動、健康讚美操、義工探訪服務、個人情緒輔導等。為貧困長者提供適切情緒輔導及實質支援服務－改善家居、維修的需要。透過參與社區活動及持續學習平台，創造健康生活環境，達至長者健康樂無窮。

活動項目包括：生命教育小組；義工訓練班；健康讚美操（因疫情轉由網上授課）；家訪及輔導服務。

## HKEC Yan Tsuen Neighbourhood Centre

### BOCHK Charitable Foundation – Community Support and Care Services for the Elderly

To provide community care services to the elderly and singleton elders. Diversified services include life education, health exercise for seniors, home visits and personal emotional counselling. The centre also provided emotional and practical support to elderly poor, and home repair services. Older adults can have a positive perceived health-related quality of life by increasingly engaging in community activities.

Activities included: Life education, volunteer training programme, health exercise (online), home visit and counselling services.

你們要將一切的  
憂慮卸給神，  
因為他顧念你們。

(彼得前書 5:7)

Cast all your anxiety  
on him because  
he cares for you.

(1 Peter 5:7)





疲乏的，他賜能力；  
軟弱的，他加力量。

(以賽亞書 40:29)

*He gives strength to  
the weary and increases  
the power of the weak.*

(Isaiah 40:29)

### 香港宣教會恩錫鄰舍中心

#### 恩錫與碩門共享－抗疫福袋活動

對象是邨內長者及有需要家庭，共派發 100 份福袋。感謝互委會願意再度合作，並幫忙發放信息，為需要者登記。結果，兩天之內已登記額滿，受眾遍及屋邨全部六座居民。除了社工、互委會主席及其他委員外，恩錫堂亦有 10 多位義工協助派發，當中還有 3 位基督少年軍。

#### HKEC Zion Neighbourhood Centre

##### Zion and Shek Mun - Distribution of Anti-epidemic Lucky Bags

We distributed 100 lucky bags to the elderly and the needy families. Thanks for the cooperation of the committee who actively deliver the message to the residents of 6 blocks; quota was full in 2 days. In addition to social workers, Chairman and other committee member, 10 volunteers, including 3 Christ boys' Army assisted with the distribution of the bags.



### 香港宣教會恩田鄰舍服務中心

#### 與鄰舍輔導會合辦防衰老運動

全面提升社區人士防衰老的意識及建立健康生活模式為目標，計劃包括：

1. 衰老篩查
2. 全方位訓練
3. 教育講座
4. 運動工作坊
5. 健康大使

#### HKEC Yan Tin Neighbourhood Service Centre

##### Organized anti-ageing exercise with the Neighbourhood Advice-Action Council.

Wholly enhance the awareness of anti-aging in the community and forming a healthy lifestyle as the goal, the plan includes:

1. Frailty screening
2. All-round training
3. Educational seminars
4. Sports workshop
5. Health ambassador





### 香港宣教會恩磐愛鄰舍中心

#### 「疫境同行迎中秋」月餅福袋送暖行動

在中秋「人月兩團圓」的佳節，社區內不乏很多基層的家庭和長者，他們除了面對長時間獨困在家中的壓力，更要應付生活物資短缺的問題，身心都遇到沉重的打擊。本中心在這艱難時刻獲得慈善機構捐贈月餅和防疫物資，為 250 位孤單無助獨居或體弱長者及有需要的街坊派發月餅和福袋，送上關愛和節日祝福。

#### Grace Neighborhood Loving Centre

The mid-autumn festival with the full moon in the sky calls people to gather; but many grassroot families and the elderly live alone and lead a hard life. The centre is very grateful to charitable associations for donating moon cakes and anti-epidemic supplies to 250 elderly and residents in need to express our care and warm wishes for the festive season.



耶和華必然等候，要施恩給你們；必然興起，好憐憫你們。  
因為耶和華是公平的神；凡等候他的都是有福的！

(以賽亞書 30:18)

And therefore will the LORD wait,  
that he may be gracious unto you, and therefore will he be exalted,  
that he may have mercy upon you: for the LORD is a God of judgment:  
blessed are all they that wait for him.

(Isaiah 30:18)



## 疫情支援





# 各服務單位服務數據摘要

## Statistic of Service

### 接受個案

### Number of Cases

#### 香港宣教會大興長者鄰舍中心 HKEC Tai Hing Neighbourhood Elderly Centre

服務人數 Number of members		偶到服務 Walk-in Services (Person Times)	開放節數 Opening Session (Sessions)
全年長者 Elderly	867	3,095	113
義工 Volunteer	101		
個案 Cases	118		
服務隱蔽或需要照顧長者 Hidden and vulnerable elder	63		

#### 香港宣教會白普理上水家庭中心 HKEC Bradbury Sheung Shui Family Centre

服務人數 Number of members		偶到服務 (次數) Walk-in Services (Person Times)	諮詢服務 (次數) Enquires (Person Times)	開放節數 Opening Session (Sessions)
家庭會員人數 Individual member	998	284	582	219
個人會員人數 Family member	109			

#### 香港宣教會粉嶺家庭中心 HKEC Fanling Family Centre

服務人數 Number of members	偶到服務 (次數) Walk-in Services (Person Times)	諮詢服務 (次數) Enquires (Person Times)	開放節數 Opening Session (Sessions)
2,464	763	160	546

#### 香港宣教會恩全鄰舍中心 HKEC Yan Tsuen Neighbourhood Centre

服務人數 Number of members	偶到服務 (次數) Walk-in Services (Person Times)	諮詢服務 (次數) Enquires (Person Times)	開放節數 Opening Session (Sessions)
130	250	300	360

#### 香港宣教會恩霖社區服務中心 HKEC Yan Lam Community Service Centre

偶到服務 (次數) Walk-in Services (Person Times)	諮詢服務 (次數) Enquires (Person Times)	開放節數 Opening Session (Sessions)
17,863	25,057	528

#### 香港宣教會恩磐愛鄰舍中心 Grace Neighborhood Loving Centre

會員人數 Number of members 2020 年 11 月至 2021 年 3 月
479



## 服務統計

## Services Statistics

### 香港宣教會大興長者鄰舍中心 HKEC Tai Hing Neighbourhood Elderly Centre

服務類別 Services Item	服務次數 / 人數 Number of Services / Member	服務人次 Person Times	全年舉辦的 小組 / 活動數目 Total number of groups and activities (Annual)	全年服務推廣 / 建立策略夥伴 數目 Service Promotion and Strategic Partner (Annual)	統一評估服務 Standardised Care Need Assessment
認知障礙症訓練 Staff Training for Dementia Service	-	46	229	63	61
推廣公眾教育認知障礙症服務 Community Education of Dementia	10	-			
認知障礙症訓練 / 活動小組 Dementia Training / Activity	15	-			
認知障礙症職員訓練 Staff Training for Dementia Service	18	-			
需支援護老者活動 / 小組 Carer Supportive Activities / Groups	22	-			
需支援護老者協助服務 Need to Support Elderly Services	100	-			
需支援護老者服務 Carer Supportive Service	-	87			
護老者服務 Supportive Service	-	145			
<b>合共總數 Total Services</b>	<b>165</b>	<b>278</b>	<b>229</b>	<b>63</b>	<b>61</b>

### 香港宣教會白普理上水家庭中心 HKEC Bradbury Sheung Shui Family Centre

服務類別 Services Item	服務次數 Number of Services	服務人次 Person Times
課餘託管服務 After School Care	219	3,151
幼兒親子活動 Early Childhood and Family Activities	217	384
兒童、青少年發展及成人興趣小組 Children, Teenagers development and Adult's interest group	1,716	1,982
家庭及社區教育活動 Family and Community Education Activities	106	9,248
家居支援服務 Home Care Service	7,434	7,434
<b>合共總數 Total Services</b>	<b>9,692</b>	<b>22,199</b>

### 香港宣教會白普理上水家庭中心綜合家庭照顧服務隊

### HKEC Bradbury Sheung Shui Family Centre Intergrated Home Care Services Team

服務類別 Services Item	服務次數 Number of Services	服務人次 Person Times
個人護理服務 Personal Nursing Services	820	93
簡單護理服務 Simple Nursing Services	2,953	1,652
運動鍛煉 Sports and Exercise	15	11
家居照顧 Home Care	687	536
護送 Escort	2,162	991
採購 Procurement	735	363
洗衣 Laundry	92	26
膳食 Meal	79,259	4,148
復康治療 Rehabilitation Treatment	410	226
派發抗疫物資活動 Distribution of Anti-epidemic Supplies	553	550
<b>合共總數 Total Services</b>	<b>87,686</b>	<b>8,596</b>



## 香港宣教會粉嶺家庭中心 HKEC Fanling Family Centre

活動類別 Services Item	班組數目 Group	節數 Session	參加人數 Number of Participant	參加人次 Number of Participant
課餘託管服務 After School Care	5	164	232	3,729
學科輔導 Tuition	2	46	55	142
青少年成長及培育活動 Youth Development	2	28	48	624
兒童教育課程 Children Education	70	557	380	2,809
兒童興趣課程 Children Interest Group	36	206	267	1,531
社區活動 Community Program	16	126	1,624	3,009
家長教育課程 Parenting Program	2	6	256	256
家長興趣課程 Parent Interest Group	3	13	13	49
家庭活動 Family Program	2	25	411	411
義工服務 Volunteer Service	2	20	221	656
<b>合共總數 Total Services</b>	<b>140</b>	<b>1,191</b>	<b>3,507</b>	<b>13,216</b>

## 香港宣教會恩全鄰舍中心 HKEC Yan Tsuen Neighbourhood Centre

服務類別 Services Item	活動次數 Number of Services	服務人次 Person Times
愛心糧倉 - 短期食物支援計劃 Love Food Bank	160	20 (家庭)
義工訓練計劃 Volunteer Training Program	44	85
健康讚美操 Health Compliment Exercise	18	46
獨居 / 雙老長者上門家居維修 Home Repairs for Single / Double Elderly Living	15	15
上門探訪及發送物資 Home Visit and Delivery of Supplies	240	60
獨居 / 雙老長者輔導 Elderly Counselling for Singleton Elderly / Doubleton Elderly	14	3
大埔支援獨居 / 雙老及家庭食物券派發 Tai Po Supports Living alone / Double and Families to distribute Food Coupons	1	40
<b>合共總數 Total Services</b>	<b>492</b>	<b>-</b>

## 香港宣教會學校服務隊 HKEC School Services Team

服務類別 Services Item	推行時間 Time	協作學校 Number of Partner Schools	組數 Group	日數 / 次數 Person	接受服務人次 Quantity of Beneficiaries
全方位學生輔導服務 (駐校社工) Comprehensive Student Guidance Service (Social Workers at School)	2020 年 4 月 1 日至 8 月 31 日	5	-	522	12,999
駐校社工諮詢及督導服務 School Social Worker on Consultation and Supervision Service		10	-	-	-
成長的天空 (按學年) Understanding Adolescent Project (By Year)	2020 年 9 月 1 日至 2021 年 3 月 31 日	35	92	564	9,795
校本課後學習及支援學習計劃 School-based After School Learning and Support Programmes: Community-based Projects		8	-	338	13,090
家長及學生成長 Parenting Education and Student Development		27	-	-	5,296
<b>合共總數 Total Services</b>		<b>85</b>	<b>184</b>	<b>1,424</b>	<b>41,180</b>



## 香港宣教會恩霖社區服務中心 HKEC Yan Lam Community Service Centre

服務類別 Services Item	服務次數 Number of Services	服務人次 Person Times
幼兒、親職教育及家庭服務 Early Childhood, Parenting Education and Family Service	29	46
課餘託管服務 After School Care Service	452	6,633
特殊教育需要服務 Special Educational Needs Service	332	1,646
興趣小組 / 兒童及青少年服務 Interest Group / Children and Youth Service	674	3,071
社區發展及居民網絡服務 Community Development and Neighborhood Networking Service	733	7,001
長者服務 Elderly Service	1,175	4,359
其他社區參與及創新服務 Other Community Program and Pioneer Service	2	170
<b>合共總數 Total Services</b>	<b>3,397</b>	<b>22,926</b>

## 香港宣教會恩錫鄰舍中心 HKEC Zion Neighbourhood Centre

服務類別 Services Item	推行時間 Time	活動次數 Number of Services	接受服務人次 Quantity of Beneficiaries
上門派發抗疫福袋 Home Delivery of Anti-epidemic Lucky Bags	2020 年 4 月	1	100
基層生活互動計劃 Grassroot Life Interaction Plan	2020 年 6 月	3	240
中秋節網上親子活動 Mid-Autumn Festival Online Parent-Child Activities	2020 年 9 月 26 日	1	18
恩錫共享活動 (文具) Zion Shared Activity (Stationery)	2020 年 10 月 3-4 日	2	50
恩錫共享活動 (圖書) Zion Shared Activity (Book)	2020 年 11 月 27-28 日	2	60
新春送暖行動 New Year's Aid Operation	2021 年 1 月	3	600
恩錫共享活動 (家品) Zion Shared Activity (Household)	2021 年 2 月 10 日	1	80
恩錫與碩門共享 (抗疫福袋) Shared by Zion and Shek Mun (Anti-epidemic Lucky Bags)	2021 年 3 月 28 日	1	100
復活節活動 Easter Activities	2021 年 3 月 31 日	1	5
輔導及轉介 Counseling and Referral	按需要 on needs	144	162
<b>合共總數 Total Services</b>	<b>-</b>	<b>159</b>	<b>1,415</b>



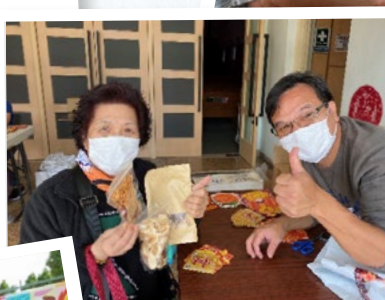


## 香港宣教會恩田鄰舍服務中心 HKEC Yan Tin Neighbourhood Centre

服務類別 Services Item	推行時間 Time	活動次數 Number of Services	接受服務人次 Quantity of Beneficiaries
派發防疫福袋予長者及清潔工人 Distribution of Anti-epidemic Lucky Bags for Elderly and Cleaners	2020 年 4-5 月	3	300
邀請會員上中心領取防疫物資 Invite Members to the Centre to Collect Anti-epidemic Supplies	2020 年 8-9 月	2	100
<b>合共總數 Total Services</b>	-	<b>5</b>	<b>400</b>

## 香港宣教會恩磐愛鄰舍中心 Grace Neighborhood Loving Centre

服務類別 Services Item	推行時間 Time	受惠人數 Number of Services
派月餅及防疫用品 Distribution of Moon Cakes and Anti-epidemic Goods	2020 年 9 月 30 日	250
「點點心意」派惠康現金券及 71 便利店飯券 'Some Snacks' Distribution Welcome Cash Coupon and 7-11 Meal Coupon	2020 年 11 月 21 日	399
食物銀行：「惜食共享計劃」派發油、罐頭、乾糧及大快活餐券 Food Bank: 'Food Wise Sharing Project' Distribute Oil, Can, Snack and Fairwood Meal Coupon	2020 年 12 月 31 日	71
食物銀行 Food Bank	2021 年 1 月 7 日 2021 年 3 月 16 日	463
上門派發賀年揮春及防疫用品 Home Delivery of Chinese New Year Fai Chun and Anti-epidemic Supplies	2021 年 1 月 25 日	200
派發珍珠糙米、消毒紙巾、湯料包和口罩 Distribute Brown Rice, Sterilized Tissues, Soup Packs and Masks	2021 年 2 月 17 日 -19 日	215
輔導服務個案 Counseling Service Case	截至 2021 年 3 月 31 日	8
探訪次數 Interview Times	截至 2021 年 3 月 31 日	156
<b>合共總數 Total Services</b>	-	<b>1,762</b>





# 白普理上水家庭中心綜合家居照顧服務隊服務範圍

## Bradbury Sheung Shui Family Centre

## Integrated Home Care Team Services Area

### 新界北區的 North District in New Territories

#### 公共房屋 Public Housing

彩園村、太平村、清河邨、祥龍圍邨、寶石湖邨

Cheung Lung Wai Estate	Choi Yuen Estate	Tai Ping Estate
Ching Ho Estate	Po Shek Wu Estate	

#### 鄉郊 Countryside

石湖墟、吳屋村、蕉徑村、丙崗村、蓮塘尾、唐公嶺、大頭嶺、木湖、營盤村、金錢村、羅湖、雞嶺、古洞、沙嶺、河上鄉、天平山村、塘肚山村、缸瓦甫、虎地坳道、華山村、恐龍坑、新屋嶺、週田村、燕崗、蓮麻坑、鳳凰湖、東風坳、松柏塢、馬草壟、牛池、上水圍、天光甫、客家圍、鹿尾村、杉山、鳳崗、石仔嶺、長甫頭、長瀝、麒麟村、塘角、掃管埔、陳屋甫、竹園、缸瑤、老鼠嶺、下香園、銅鑼坑、較寮村、塘坊、香園圍、鷓鴣坑、信義新村、橫瀝、松園下、簡頭圍、南坑、圓嶺仔

Chan UK Po	Kam Tsin	Ng Uk Tsuen	Tong Kok
Cheung Lek	Kan Tau Wai	Ngau Tei	Tong Kung Leng
Cheung Po Tau	Kau Lui Village	Ping Kong	Tong To Shan Tsuen
Chow Tin Tsuen	Ki Lun Tsuen	San Uk Ling	Tse Koo Hang
Chuk Yuen	Kong A	Sha Ling	Tsiu Keng
Fu Tei Ao To	Kong Yiu	Sham Shan	Tsung Pak Long
Fung Kong	Kwu Tung	Shek Tsai Leng	Tsung Yuen Ha
Fung Wong Wu	Lin Ma Hang	Shek Wu Hui	Tung Fung Au
Ha Heung Yuen	Lin Tong Mei	Sheung Shui Village	Tung Lo Hang
Hakka Wai	Lo Shue Ling	Shun Yee San Tsuen	Wah Shan Tsuen
Hang Tau	Luk Mei Tsuen	So Kwun Po	Wang Hang
Heung Yuen Wai	Lo Wu	Tai Tau Leng	Yin Kong
Ho Sheung Heung	Ma Tso Lung	Tin Kwong Po	Ying Pun
Hung Lung Hang	Muk Wu	Tin Ping Shan Village	Yuen Ling Chai
Kai Leng	Nam Hang	Tong Fong	

#### 私人屋苑 Private Estate

彩蒲苑、旭埔苑、華慧園、威尼斯花園、維也納花園、欣翠花園、海裕苑、翠彤苑、奕翠園、上水中心、上水名都、蔚翠花園、龍豐花園、新都廣場、翠麗花園、順欣花園

Camellia Court	Glamour Garden	Sheung Shui Centre	Venice Garden
Cheerful Park	Greenpark Villa	Sheung Shui Town Centre	Vienna Garden
Choi Po Court	Lung Fung Garden	Sunningdale Garden	Woodland Crest
Eden Garden	Metropole Plaza	Tsui Lai Garden	Yuk Po Court



## 學校服務隊協作學校及團體

## School Services Team Partnership School and Organizations

香海正覺蓮社佛教陳式宏學校  
HKCKLA Buddhist Chan Shi Wan  
Primary School

保良局田家炳小學  
Po Leung Kuk Tin Ka Ping Primary School

香港紅十字會雅麗珊學校  
Hong Kong Red Cross  
Princess Alexandra School

佛教志蓮小學  
Chi Lin Buddhist Primary School

仁愛堂劉皇發夫人小學  
Yan Oi Tong Madam Lau Wong Fat  
Primary School

聖公會榮真小學  
SKH Wing Chun Primary School

中華基督教會方潤華小學  
CCC Fong Yun Wah Primary School

五旬節于良發小學  
Pentecostal Yu Leung Fat Primary School

聖公會仁立紀念小學  
SKH Yan Laap Memorial Primary School

慈幼葉漢千禧小學  
Salesian Yip Hon Millennium Primary School

鳳溪第一小學  
Fung Kai No.1 Primary School

中華基督教青年會上水幼稚園  
Chinese YMCA Sheung Shui Kindergarten

大埔舊墟公立學校  
Tai Po Old Market Public School

福德學社小學  
Fuk Tak Education Society  
Primary School

保良局莊啟程第二小學  
PLK Vicwood KT Chong  
No.2 Primary School

天主教聖母聖心小學  
Sacred Heart of Mary Catholic  
Primary School

仁濟醫院永隆幼稚園 / 幼兒中心  
Yan Chai Hospital Wing Lung  
Kindergarten

香海正覺蓮社佛教正慧小學  
HKCKLA Buddhist Wisdom  
Primary School

九龍城浸信會禧年(恩平)小學  
Kowloon City Baptist Church  
Hay Nien(Yan Ping)Primary School

中華基督教會元朗真光小學  
CCC Chun Kwong  
Primary School

香港道教聯合會純陽小學  
HKTA Shun Yeung Primary School

中華基督教會何福堂小學  
CCC Hoh Fuk Tong Primary School

聖公會嘉福榮真小學  
SKH Ka Fuk Wing Chun Primary School

迦密梁省德學校  
Carmel Leung Sing Tak School

僑港伍氏宗親會伍時暢紀念學校  
The Hong Kong Eng Clansman Association  
Wu Si Chong Memorial School

聖公會阮鄭夢芹小學  
SKH Yuen Chen Maun Chen Primary School

天水圍官立學校  
Tin Shui Wai Government Secondary School

香港中文大學校友會聯會張煊昌學校  
CUHK FAA Thomas Cheung School

金巴倫英文幼稚園  
St. Nicholas' English Kindergarten

元朗公立中學校友會小學  
Yuen Long Public Middle School Alumni  
Association Primary School

世界龍岡學校黃耀南小學  
LKWFSL Wong Yiu Nam  
Primary School

上水惠州公立學校  
Wai Chow Public School(Sheung Shui)

大埔舊墟公立學校  
Tai Po Old Market Public School

竹園區神召會太和康樂幼兒學校  
Pentecostal Church of HK Tai Wo  
Nursery School

天水圍循道衛理小學  
Tin Shui Wai Methodist  
Primary School

沙頭角中心小學  
Sha Tau Kok Central Primary School

五旬節新茂生小學  
Pentecostal Gin Mao Sheng  
Primary School

基督教粉嶺神召會小學  
Fanling Assembly of God Church  
Primary School

柏立基教育學院校友會李一譔紀念學校  
SRBCEPSA Lee Yat Ngok Memorial School

柏立基教育學院校友會何壽基學校  
SRBCEPSA Ho Sau Ki School

東莞學校  
Tung Koon School (Sheung Shui)

聖公會阮鄭夢芹銀禧小學  
SKH Yuen Chen Maun Chen Jubilee  
Primary School

大埔浸信會公立學校  
Tai Po Baptist Public School

浸信會天虹小學  
Baptist Rainbow Primary School

中華基督教會上水堂幼稚園  
Church of Christ in China Sheung Shui  
Church Kindergarten

樂富禮賢會幼稚園  
Lok Fu Rhenish Church Kindergarten

聖公會蒙恩小學  
SKH Wing Mung Yan Primary School

港澳信義會黃陳淑英紀念學校  
HKMLC Wong Chan Sook Ying  
Memorial School

打鼓嶺嶺英公立學校  
Ta Ku Ling Ying Public School

樂基幼兒學校(駿景園)  
Hong Kong (Ascot) Preschool & Playschool

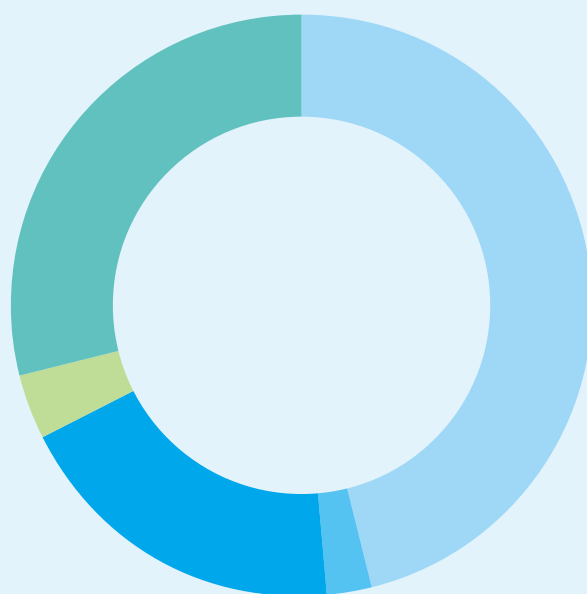


## 財務概覽

### Financial Summary

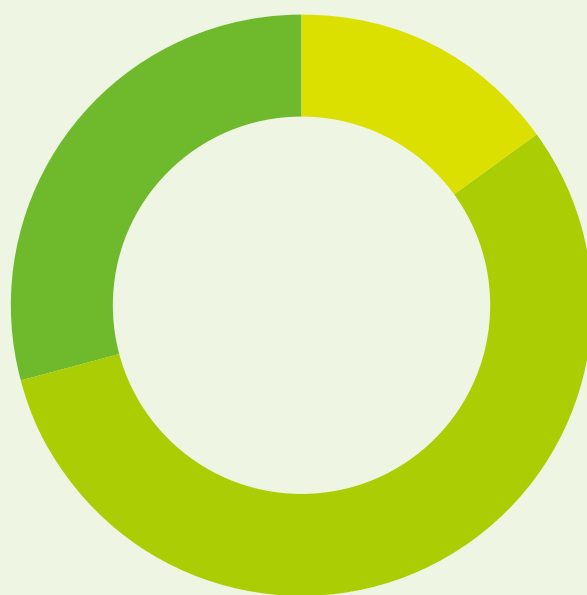
#### 收入 Income

收入分類 Analysis of Income	總額 Amount	佔總收入比例 Proportion
● 社會福利署津助 SWD Subventions	18,597,340	46.10%
● 公益金津助 Community Chest Fund	920,796	2.28%
● 其他基金津助 Other Funding	7,703,498	19.10%
● 捐款及籌款 Donation and Fundraising	1,387,374	3.44%
● 服務收費 Programme Income	11,642,550	28.86%
● 其他收入 Others	87,831	0.22%
<b>總收入 Total Income</b>	<b>40,339,389</b>	<b>100%</b>



#### 支出 Expenditure

支出分類 Analysis of Expenditure	總額 Amount	佔總收入比例 Proportion
● 基本運作開支 General Operations	5,588,209	15.05%
● 薪金及員工福利 Personal Emoluments	20,773,608	55.96%
● 服務及活動開支 Direct Programmes Expenses	10,763,158	28.99%
<b>總支出 Total Expenditure</b>	<b>37,124,975</b>	<b>100%</b>





# 核數報告

## Audit Report

### Hong Kong Evangelical Church Social Service Limited

### Consolidated Statement of Financial Position

### As at 31 March 2021

	2021 HK\$	2020 HK\$
<b>ASSETS</b>		
<b>Non-Current Assets</b>		
Plant and equipment	2,665,465	3,586,758
	<u>2,665,465</u>	<u>3,586,758</u>
<b>Current Assets</b>		
Accounts and other receivables	1,322,871	2,908,887
Deposits and prepayment	296,768	571,559
Time deposit	-	800,000
Cash and cash equivalents	20,757,904	13,805,821
	<u>22,377,543</u>	<u>18,086,267</u>
<b>Current Liabilities</b>		
Accounts payable and accruals	2,311,524	1,626,434
Receipt in advance	2,749,223	2,466,455
Amounts due to related parties	4,575,446	4,585,446
	<u>9,636,193</u>	<u>8,678,335</u>
Net Current Assets	12,741,350	9,407,932
	<u>15,406,815</u>	<u>12,994,690</u>
<b>Non-Current Liabilities</b>		
Provision for long service payment	313,021	1,115,310
Net Assets	<u>15,093,794</u>	<u>11,879,380</u>
<b>RESERVES &amp; FUNDS</b>		
General fund	6,088,258	2,729,965
Lump sum grant and TOG reserve	6,621,857	6,158,166
Reserve for future development	94,409	94,409
Fixed assets fund	2,097,082	2,702,867
Charitable activities reserve	192,099	193,884
The Sir Robert Ho Tung Charitable Fund	89	89
Total reserves & funds	<u>15,093,794</u>	<u>11,879,380</u>



# Hong Kong Evangelical Church Social Service Limited

## Consolidated Statement of Comprehensive Income

### for the year ended 31 March 2021

	2021 HK\$	2020 HK\$
<b>INCOME</b>		
Activity income	238,236	1,060,402
Anti-epidemic Fund-Time Limited Posts for Elderly and Rehabilitation Service	184,000	-
Bank interest income	6,682	43,188
Beat Drugs Fund income	451,530	515,638
BOCHK Centenary Charity Programme income	236,725	-
Community Chest Fund programme income	920,796	1,145,649
Community Care Fund assistance programme income	1,050,906	798,953
Course, day care and tuition fee	3,040,181	7,649,859
Donation income	1,387,374	895,359
Empolyment Support Scheme	3,044,029	-
Flag day fund-raising income	-	704,643
Innovation and Technology Fund for Application in Elderly and Rehabilitation care	65,400	-
Other grants and subvention	2,680,906	3,551,158
Programme income	37,620	232,325
Special grant	226,727	127,318
School project fee	6,618,085	8,531,957
Service income	1,414,982	1,597,725
Social welfare subvention	18,597,340	17,757,831
Subscription fee	56,720	90,525
Sundry income	81,150	118,125
	<b>40,339,389</b>	<b>44,820,655</b>
<b>EXPENDITURE</b>		
Activity and programme expenses	2,586,055	3,650,449
Administration fee	26,523	10,790
Advertising	35,897	78,612
Anti-epidemic Fund-Time Limited Posts for Elderly and Rehabilitation Service	52,500	-
Auditors' remuneration	115,000	103,600
Bank interest and charges	5,404	4,729
Beat Drugs Fund expenses	132,608	244,108
BOCHK Centenary Charity Programme expenses	190,108	-
Books, newspaper and magazine	1,126	14,858
Cleaning expenses	351,628	280,283
Community Chest Fund programme expenses	127,440	174,514
Community Care Fund assistance programme income	850,863	666,253
Course, day care and tutorial class expenses	1,781,361	2,987,480
Depreciation	1,385,067	1,401,134
Donation expenses	3,550	5,000
Flag day fund raising expenses	-	59,021
Food	1,007,872	1,046,083
Innovation and Technology Fund for Application in Elderly and Rehabilitation care	85,548	-
Insurance	278,935	213,419
Loss on written off assets	75,557	-
Mandatory and ORSO contribution	1,477,288	1,590,365
Membership fee	4,980	4,980
Messing expenses	17,560	63,291
Minor purchases, repair and maintenance	566,977	633,424
Motor vehicle expenses	30,779	28,705
Other service expenses	697,420	874,501
Postage	4,213	7,331
Printing and stationery	201,732	173,359
Professional and religious charges	688,247	286,318
Rent and rates	1,493,848	1,780,270
Salaries	19,296,320	21,741,128
School project expenses	384,146	1,650,860
Special grant expenses	285,890	116,365
Sub-contracting services	1,104,825	586,112
Staff welfare	57,666	80,585
Sundry expenses	217,151	455,561
Telephone and fax	103,171	82,939
Training expenses	210,600	194,885
Travelling	348,449	326,374
Tutor expenses	641,835	1,145,133
Utility expenses	198,836	431,533
	<b>37,124,975</b>	<b>43,194,352</b>
Total comprehensive surplus for the year	<b>3,214,414</b>	<b>1,626,303</b>



# Hong Kong Evangelical Church Social Service Limited

## Annual Financial Report

### 1 April 2020 To 31 March 2021

	Total 2021 HK\$	Total 2020 HK\$
<b>A. INCOME</b>		
1. Lump Sum Grant		
a. Lump Sum Grant (Excluding Provident Fund)	15,755,405.00	14,115,238.00
b. Provident Fund	1,085,147.00	973,674.00
2. Fee Income	1,363,764.15	1,421,382.60
3. Central Items	413,710.00	632,612.00
4. Rent & Rates	410,995.00	946,089.00
5. Other Income	103,597.53	232,324.60
6. Interest Received	6,530.38	39,942.45
<b>TOTAL INCOME</b>	<b>19,139,149.06</b>	<b>18,361,262.65</b>

## B. EXPENDITURE

1. Personal Emoluments		
a. Salaries	10,884,831.71	9,862,440.88
b. Provident Fund	784,962.69	721,857.42
Sub-total	11,669,794.40	10,584,298.30
2. Other Charges	6,303,734.76	5,056,563.80
3. Central Items	334,897.00	587,327.00
4. Rent & Rates	309,632.00	511,377.00
<b>TOTAL EXPENDITURE</b>	<b>18,618,058.16</b>	<b>16,739,566.10</b>
<b>C. SURPLUS FOR THE YEAR</b>	<b>521,090.90</b>	<b>1,621,696.55</b>

## Provident Fund Contribution

	Snapshot Staff \$	6.8% and Other Posts \$	Total \$
Subvention Received	174,080.00	911,067.00	1,085,147.00
Provident Fund Contribution Paid during the year	(164,145.80)	(620,816.89)	(784,962.69)
Surplus for the year	9,934.20	290,250.11	300,184.31
Add: (Deficit) / Surplus b/f	(13,241.49)	2,443,936.57	2,430,695.08
Add: Additional subvention received for previous year(s)	-	-	-
Less: Refund to Government	-	-	-
<b>(Deficit) / Surplus c/f</b>	<b>(3,307.29)</b>	<b>2,734,186.68</b>	<b>2,730,879.39</b>



# 董事會及管理委員名錄

## List of Directors and Management Board Members (2020/2021)

### 香港宣教會社會服務處 HKEC Social Service Limited Office

主席 Chairperson	楊蘭琴牧師 Rev Yeung Lan Kam	
成員 Members	梁穎賢女士 Ms Leung Wing Yin	陳金蓮牧師 Rev Chan Kam Lin
	葉寶言先生 Mr Yip Po Yin	張志娟女士 Ms Cheung Chi Kuen
	陳汝生牧師 Rev Chan Yu Sang	羅樂華先生 Mr Lo Lok Wa
列席 Nonvoting	葉建忠先生 (助理督導主任) Mr Yip Kin Chung (Assistant Supervisor)	

### 香港宣教會大興長者鄰舍中心 HKEC Tai Hing Neighbourhood Elderly Centre

主席 Chairperson	張志娟姑娘 Ms Cheung Chi Kuen	
成員 Members	陳彼信先生 Mr Chan Pei Shun	梁志文先生 Mr Leung Chi Man
	黃笑薇女士 Ms Wong Siu Me	羅麗明女士 Ms Law Lai Ming
列席 Nonvoting	葉燕女士 (中心主任) Ms Yip Yin (Centre In-Charge)	

### 香港宣教會白普理上水家庭中心 HKEC Bradbury Sheung Shui Family Centre

#### 香港宣教會白普理家庭中心綜合家居照顧服務隊 HKEC Bradbury Sheung Shui Family Centre Integrated Home Care Services Team

### 香港宣教會恩霖社區服務中心 HKEC Yan Lam Community Service Centre

#### 香港宣教會學校服務隊 HKEC School Services Team

主席 Chairperson	陳汝生牧師 (中心總監) Rev Chan Yu Sang (Centre Director)	
成員 Members	張杰先生 Mr Cheung Kit	冼家慧女士 Ms Sin Ka Wai
	方恩傑先生 Mr Fong Yan Kit	
列席 Nonvoting	曾玉英女士 (助理督導主任) Ms Tsang Yuk Ying (Assistant Supervisor)	
	葉建忠先生 (助理督導主任) Mr Yip Kin Chung (Assistant Supervisor)	

### 香港宣教會粉嶺家庭中心 HKEC Fanling Family Centre

主席 Chairperson	陳金蓮牧師 (中心總監) Rev Chan Kim Lin (Centre Director)	
成員 Members	楊偉業牧師 Rev Yeung Wai Yip	陳立德先生 Mr Chan Lap Tak
	阮小娟女士 Ms Yuen Siu Kuen	王學清先生 Mr Wong Hok Ching
列席 Nonvoting	陳永泰先生 (中心主任) Mr Chan Wing Tai (Centre In-Charge)	

### 香港宣教會恩全鄰舍中心 HKEC Yan Tsuen Neighbourhood Centre

暫代主席 Chairperson	梁穎賢女士 (中心顧問) Ms Leung Wing Yin (Centre Consultant)	
成員 Members	張旭民先生 Mr Cheung Yuk Man	

### 香港宣教會恩錫鄰舍中心 HKEC Zion Neighbourhood Centre

主席 Chairperson	楊蘭琴牧師 (中心總監) Rev Yeung Lan Kam (Centre Director)	
成員 Members	林偉傑先生 Mr Lam Wai Kit	王敏思女士 Ms Wong Man Sze
	陳春歡女士 Ms Chan Chun Foon	

### 香港宣教會恩田鄰舍服務中心 HKEC Yan Tin Neighbourhood Service Centre

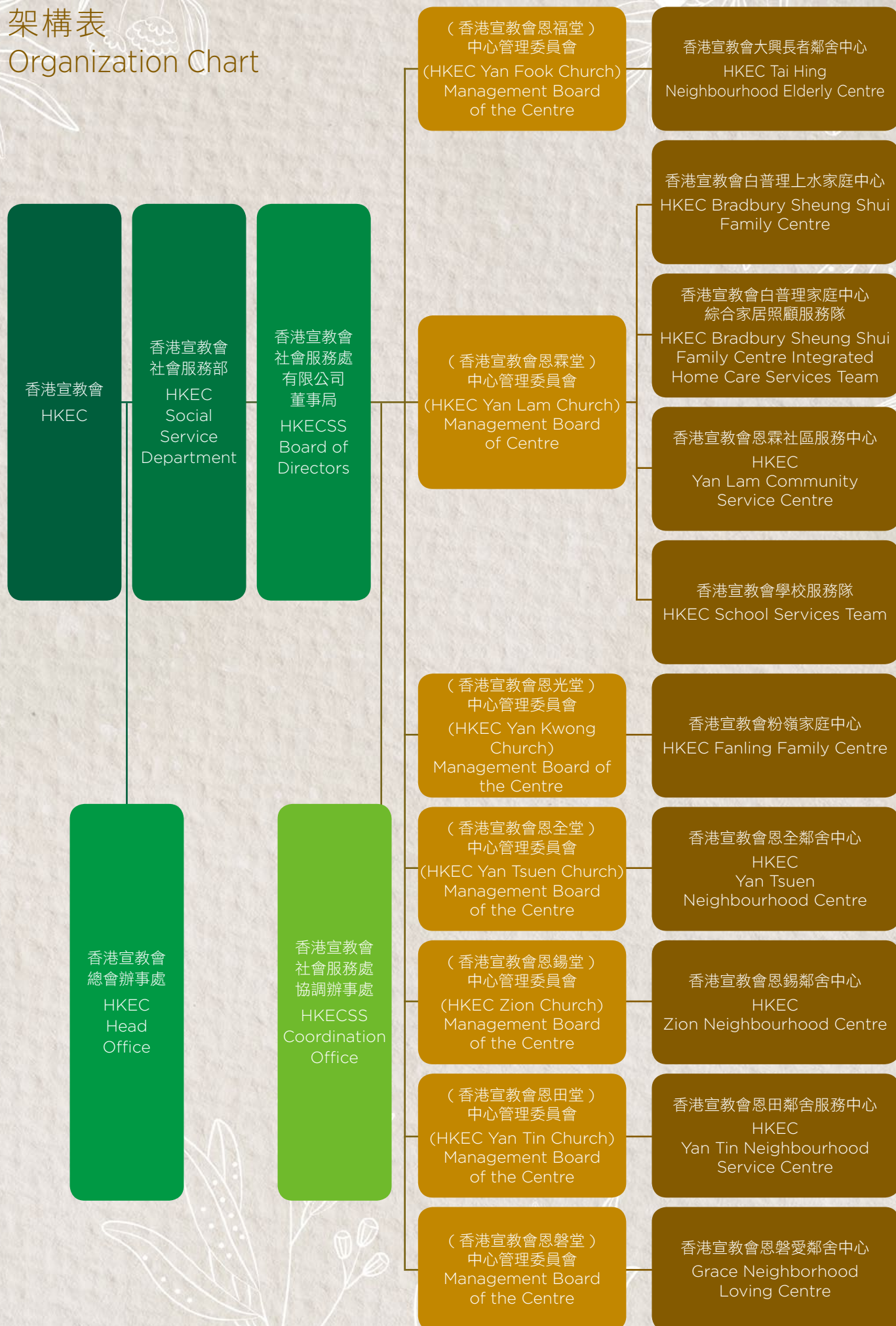
主席 Chairperson	羅樂華先生 (中心總監) Mr Lo Lok Wa (Centre Director)	
成員 Members	梁曉然先生 Mr Leung Hiu Yin	梁鳳華女士 Ms Leung Fung Wah
	潘芷晴女士 Ms Poon Tsz Ching	

### 香港宣教會恩磐愛鄰舍中心 Grace Neighborhood Loving Centre

主席 Chairperson	陳建超牧師 (中心總監) Rev Chan Kin Chiu (Centre Director)	
成員 Members	林國平先生 Mr Lam Kwok Ping	何翠華女士 Ms Ho Chui Wah
	梁竹君女士 Ms Leung Chuk Kwan	孫詠秋女士 Ms Sun Wing Chow



# 架構表 Organization Chart





## 鳴謝

## Acknowledgement

2020/2021 本處及轄下各服務單位有賴下列機構及人士的協助，謹此致謝（排名不分先後）：  
On the behalf of beneficiaries, we extend our sincere thanks to all of them for supporting our work in the year of 2020/2021. Owing to limited space, we regret for being unable to print all their names.

社會福利署  
Social Welfare Department  
社會福利署抗疫基金  
Social Welfare Department  
(Anti-epidemic Fund)  
社會福利署 - 老有所為活動計劃  
SWD-Opportunities for the Elderly  
Project  
關愛基金  
Community Care Fund  
社區投資共享基金  
Community Investment and Inclusion  
Fund  
香港公益金  
The Community Chest of Hong Kong  
社會服務聯會  
Social Service Federation  
敬老護老愛心會有限公司  
Care for The Elderly Association Limited  
社福界抗疫送暖大行動  
Social Welfare Caring Campaign for  
Anti-epidemic  
聯合集運股份有限公司  
United Express Holding Company Limited  
粵劇社  
Cantonese Opera Association  
台山商會小學  
Toi Shan Association Primary School  
曾梅千禧小學  
Tsang Mui Millennium School  
顧積善堂慈善基金  
Koo's Giving Charitable Foundation  
古天樂慈善基金會  
Koo Tin Lok Charitable Foundation  
李國賢兒童基金  
Simon K.Y. Lee Children's Fund  
容祖兒慈善基金  
Joey Yung Charitable Foundation  
匯豐銀行慈善基金  
The Hongkong Bank Foundation  
忠信義慈善基金  
DTFU Charity Foundation  
聖雅各福群會  
St. James' Settlement  
香港基督少年軍  
The Boys' Brigade, Hong Kong  
香港樹仁大學  
Hong Kong Shue Yan University  
銘恩園服務中心  
Remembrance of Grace Community  
Service Centre Limited  
伯特利輔導中心  
Bethel Pastoral Counseling Centre  
悠悠教育基金  
Serenity Foundation  
基督少年軍 346 分隊  
The Boy's Brigade, Hong Kong, Team 346  
碩門邨互助委員會  
Shek Mun Estate Mutual Aid Committee

基層生活互助計劃  
Grass Roots Support Program  
香港宣教會恩錫堂  
HKEC Zion Neighbourhood Centre  
香港宣教會恩田堂  
Hong Kong Evangelical Yan Tin Church  
香港宣教會恩光堂  
Hong Kong Evangelical Yan Kwong Church  
香港宣教會優質幼兒學校  
HKEC Elite Kindergarten  
鄰舍輔導會  
The Neighbourhood Advice-Action Council  
點點心意計劃  
Heartfelt Give-Back Program  
善源協會  
Sin Yuen Association  
天晴國際  
Sunny World Investment Company  
Limited  
港龍（香港）按揭有限公司  
Kongwell (Hong Kong) Mortgage Limited  
智勇堂  
W.B.M. Company Limited  
彩豐行  
Choi Fung Hong Company Limited  
築福農莊環保口罩義工隊  
Blessing Farm Limited Environmental  
Mask Volunteer Team  
香港宣教會大興長者鄰舍中心縫補寶義工  
HKEC Tai Hing Neighbourhood Elderly  
Center Fabric Team Volunteer  
靚湯 Souper  
HK Souper  
跑去你屋企有限公司  
Run To Your Home Company Limited  
Legacy Training Limited  
香港里程同學會  
Legacy Alumni  
曾振興議員  
Mr. Tsang Chun-Hing  
顏志東先生  
Personal Donor  
謝丙新先生  
Personal Donor  
劉學謙先生  
Personal Donor  
劉學人先生  
Personal Donor  
劉學心小姐  
Personal Donor  
潘巒彬先生  
Personal Donor  
謝旻君先生  
Personal Donor  
盈豐善心人  
Personal Donor

眼目慈善的，  
就必蒙福，  
因他將食物  
分給窮人。

(箴言 22:9)

A generous man  
will himself be  
blessed, for he  
shares his food  
with the poor.

(Proverbs 22:9)



# 捐款回條

## Donation Form

本機構為香港註冊慈善團體 We are an incorporated charitable organization in Hong Kong: IRD ref: 91/4135

本人 / 公司樂意支持貴會之社會服務，並捐助港幣 I/We would like to donate,

☐ \$100    ☐ \$500    ☐ \$1,000    ☐ \$5,000    ☐ 其他數目 Others (多少無拘) \$ \_\_\_\_\_

in support of HKECSS's social service, 予下列服務單位 and please distribute to the following service unit  
(請在適用方格以✓表示，並註明金額之分配 Please tick the suitable box and state the proposed distribution):

- |   |          |
|---|----------|
| <input type="checkbox"/> 機構整體發展 Agency Development                      | \$ _____ |
| <input type="checkbox"/> 大興長者鄰舍中心 Tai Hing Neighbourhood Elderly Centre | \$ _____ |
| <input type="checkbox"/> 白普理上水家庭中心 Bradbury Sheung Shui Family Centre   | \$ _____ |
| <input type="checkbox"/> 綜合家居照顧服務隊 Integrated Home Care Services Team   | \$ _____ |
| <input type="checkbox"/> 粉嶺家庭中心 Fanling Family Centre                   | \$ _____ |
| <input type="checkbox"/> 學校服務隊 School Services Team                     | \$ _____ |
| <input type="checkbox"/> 恩霖社區服務中心 Yan Lam Community Service Centre      | \$ _____ |
| <input type="checkbox"/> 恩全鄰舍中心 Yan Tsuen Neighbourhood Centre          | \$ _____ |
| <input type="checkbox"/> 恩錫鄰舍中心 Zion Neighbourhood Centre               | \$ _____ |
| <input type="checkbox"/> 恩田鄰舍服務中心 Yan Tin Neighbourhood Service Centre  | \$ _____ |
| <input type="checkbox"/> 恩磐愛鄰舍中心 Grace Neighborhood Loving Centre       | \$ _____ |
| <input type="checkbox"/> 其他服務發展用途 Other use of development              | \$ _____ |

捐款方法 (請在適用方格以✓表示) Methods of donation (Please tick the suitable box)

- ☐ 劃線支票 (抬頭請註明「香港宣教會社會服務處有限公司」)  
Please use crosses cheque payable to: "Hong Kong Evangelical Church Social Service Limited"
- ☐ 直接將捐款存入本會戶口 - 香港東亞銀行戶口: 150-68-001252  
Transfer the amount to HKECSS's saving account at The Bank of East Asia (account number: 150-68-001252)

備註 Remarks :

- 填妥表格後，請連同劃線支票或存款收據寄交：上水彩園邨彩麗樓地下 29-40 號 香港宣教會社會服務處有限公司收。  
Please complete form and post together with the crossed cheque, and/or ATM/bank receipts to Hong Kong Evangelical Church Social Service Limited, 29-40, G/F Choi Lai House, Choi Yuen Estate, Sheung Shui NT
- 此表格之個人資料除作上述用途外，亦會用以寄發本中心資料。如不擬收取，或需查詢 / 更改個人資料，請與各中心聯絡。  
Your personal data provided in this form will be used for the above purpose. It may also be used for sending the Organizations publicity materials to you. If you do not wish to receive such material, or if you want to have access to or charge your personal data, please contact the units.
- 本會將寄回正式收據。捐款滿一百元，收據可作免稅之用。  
Official receipt would be provided. Donations over \$HK100 are tax-deductible.



# 服務單位通訊

## Our Service Units

服務單位 Our Service Units		成立年份 Year Established	通訊 Contact Details	
1	香港宣教會大興長者鄰舍中心 HKEC Tai Hing Elderly Neighbourhood Centre 	1982	地址 Address 屯門大興邨興耀樓地下 15-21 號 15-21, G/F, Hing Yiu House, Tai Hing Estate, Tuen Mun, NT.	電話 Tel 2465 7163 傳真 Fax 2456 2825 電郵 Email thelderly@hotmail.com 聯絡人 Contact Person 葉燕女士 (中心主任) Ms Yip Yin (Centre In-Charge)
2	香港宣教會白普理上水家庭中心 HKEC Bradbury Sheung Shui Family Centre 	1991	地址 Address 上水彩園邨彩麗樓地下 29-40 號 29-40, G/F, Choi Lai House, Choi Yuen Estate, Sheung Shui, NT.	電話 Tel 2670 2995 傳真 Fax 2670 8985 電郵 Email sf@hkecss.org 聯絡人 Contact Person 曾玉英女士 (助理督導主任) Ms Tsang Yuk Ying (Assistant Supervisor)
3	香港宣教會粉嶺家庭中心 HKEC Fanling Family Centre 	1993	地址 Address 粉嶺華明邨添明樓地下 3-4 號 3-4, G/F, Tim Ming House, Wah Ming Estate, Fanling, NT.	電話 Tel 2676 4010 傳真 Fax 2677 9252 電郵 Email hkeccffc@gmail.com 聯絡人 Contact Person 陳永泰先生 (中心主任) Mr Chan Wing Tai (Centre In-Charge)
4	香港宣教會白普理上水家庭中心 綜合家居照顧服務隊 HKEC Bradbury Sheung Shui Family Centre Integrated Home Care Services Team 	1994	地址 Address 上水太平邨平靜樓地下 112-114 號 112-114, G/F Ping Ching House, Tai Ping Estate, Sheung Shui, NT.	電話 Tel 2672 4160 傳真 Fax 2672 9640 電郵 Email it@hkecss.org 聯絡人 Contact Person 曾玉英女士 (助理督導主任) Ms Tsang Yuk Ying (Assistant Supervisor)
5	香港宣教會學校服務隊 HKEC School Services Team 	2007	地址 Address 上水清河邨清平樓地下 B 翼及 C 翼 Wing B & C, G/F Ching Ping House, Ching Ho Estate, Sheung Shui, NT.	電話 Tel 2672 4771 傳真 Fax 2242 2522 電郵 Email st@hkecss.org 聯絡人 Contact Person 葉建忠先生 (助理督導主任) Mr Yip Kin Chung (Assistant Supervisor)



服務單位 Our Service Units		成立年份 Year Established	通訊 Contact Details	
6	香港宣教會恩霖社區服務中心 HKEC Yan Lam Community Service Centre 	2009	地址 Address 電話 Tel 傳真 Fax 電郵 Email 聯絡人 Contact Person	上水清河邨清平樓地下 B 翼及 C 翼 Wing B & C, G/F Ching Ping House, Ching Ho Estate, Sheung Shui, NT. 2672 4771 2242 2522 st@hkecss.org 葉建忠先生 (助理督導主任) Mr Yip Kin Chung (Assistant Supervisor)
7	香港宣教會恩全鄰舍中心 HKEC Yan Tsuen Neighbourhood Centre 	2009	地址 Address 電話 Tel 傳真 Fax 電郵 Email 聯絡人 Contact Person	大埔大元邨泰怡樓 B 座地下 17-19 室 Rm 17-19, G/F Tai Yee House, Tai Yuen Estate, Tai Po, NT. 2666 9779 2125 5013 yantsuencenter@yahoo.com.hk 梁穎賢女士 (中心顧問) Ms Leung Wing Yin (Centre Consultant)
8	香港宣教會恩錫鄰舍中心 HKEC Zion Neighbourhood Centre 	2016	地址 Address 電話 Tel 傳真 Fax 電郵 Email 聯絡人 Contact Person	沙田石門安群街 1 號京瑞廣場 2 期 7 樓 J 室 Unit J, 7/F, Kings Wing Plaza 2, No.1 On Kwan St., Shek Mun, Sha Tin 5577 9114 2320 3320 zion@hkecss.org 楊蘭琴牧師 (中心總監) Rev Yeung Lan Kam (Centre Director)
9	香港宣教會恩田鄰舍服務中心 HKEC Yan Tin Neighbourhood Service Centre 	2018	地址 Address 電話 Tel 傳真 Fax 電郵 Email 聯絡人 Contact Person	九龍白田偉智街 39 號寶田大廈 1 字樓 16-18、26 室 Room 16-18, 26, 1/F, Po Tin Building, 39 Wai Chi Street, Pak Tin, Kowloon 2777 2569 2777 9079 yantin_church@yahoo.com.hk 羅樂華先生 (中心總監) Mr Lo Lok Wa (Centre Director)
10	香港宣教會恩磐愛鄰舍中心 Grace Neighborhood Loving Centre 	2020	地址 Address 電話 Tel Whatsapp 傳真 Fax 電郵 Email 聯絡人 Contact Person	九龍大坑東棠蔭街七號 7 Tong Yam Street, Tai Hang Estate, Kowloon 2777 7334 9249 3219 2784 6321 office@gracechurch.org.hk 陳建超牧師 (中心總監) Rev Chan Kin Chiu (Centre Director)





香港宣教會社會服務處有限公司  
Hong Kong Evangelical Church Social Service Limited

上水彩園邨彩麗樓地下 29-40 號

29-40, G/F, Choi Lai House, Choi Yuen Estate, Sheung Shui, NT.

電話 Tel: 2670 2995

傳真 Fax: 2670 8985

[info@hkecss.org](mailto:info@hkecss.org)

[www.hkecss.org](http://www.hkecss.org)